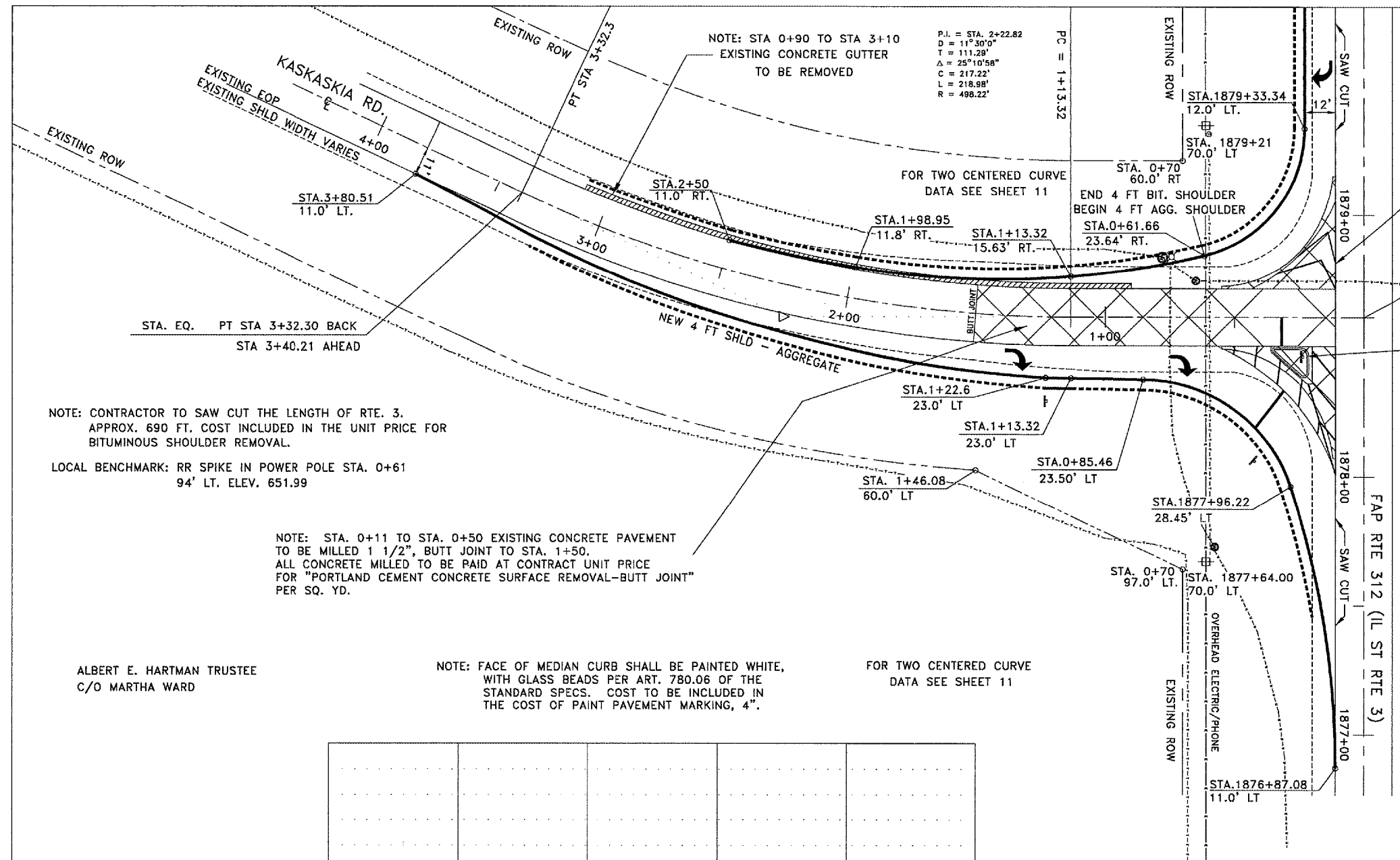


ROUTE NO	SECTION	COUNTY	TOTAL SHEETS	SHEET NO.
FAS 856	02-00041	MONROE	27	9
C.H. 1	-01-RS			

FEDERAL AID PROJECT
CONTRACT NO. 97248

WM. H. JR. & EDNA M. MUELLER TRUST

IL ST RTE 3 STA 1878+61.0
KASKASKIA RD. STA 0+00



NOTE: CONTRACTOR TO SAW CUT THE LENGTH OF RTE. 3.
APPROX. 690 FT. COST INCLUDED IN THE UNIT PRICE FOR
BITUMINOUS SHOULDER REMOVAL.

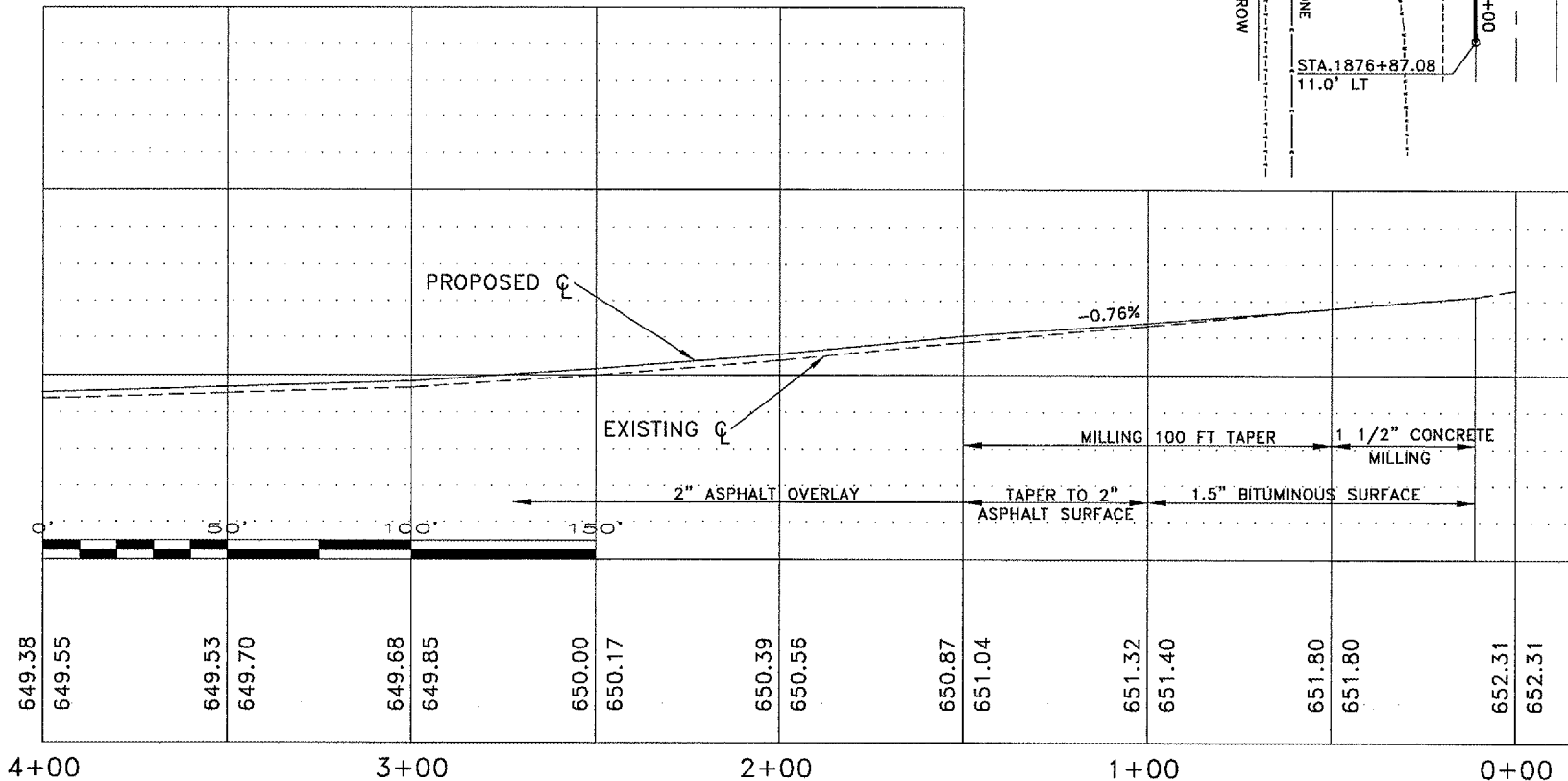
LOCAL BENCHMARK: RR SPIKE IN POWER POLE STA. 0+61
94' LT. ELEV. 651.99

NOTE: STA. 0+11 TO STA. 0+50 EXISTING CONCRETE PAVEMENT
TO BE MILLED 1 1/2", BUTT JOINT TO STA. 1+50.
ALL CONCRETE MILLED TO BE PAID AT CONTRACT UNIT PRICE
FOR "PORTLAND CEMENT CONCRETE SURFACE REMOVAL-BUTT JOINT"
PER SQ. YD.

NOTE: FACE OF MEDIAN CURB SHALL BE PAINTED WHITE,
WITH GLASS BEADS PER ART. 780.06 OF THE
STANDARD SPECS. COST TO BE INCLUDED IN
THE COST OF PAINT PAVEMENT MARKING, 4".

FOR TWO CENTERED CURVE
DATA SEE SHEET 11

ALBERT E. HARTMAN TRUSTEE
C/O MARTHA WARD



PLAN & PROFILE
KASKASKIA RD.
SECTION 02-00041-01-RS
MONROE COUNTY, IL

DRAWING FILE: S:\KASKASKIA\KASKASP&P.DWG