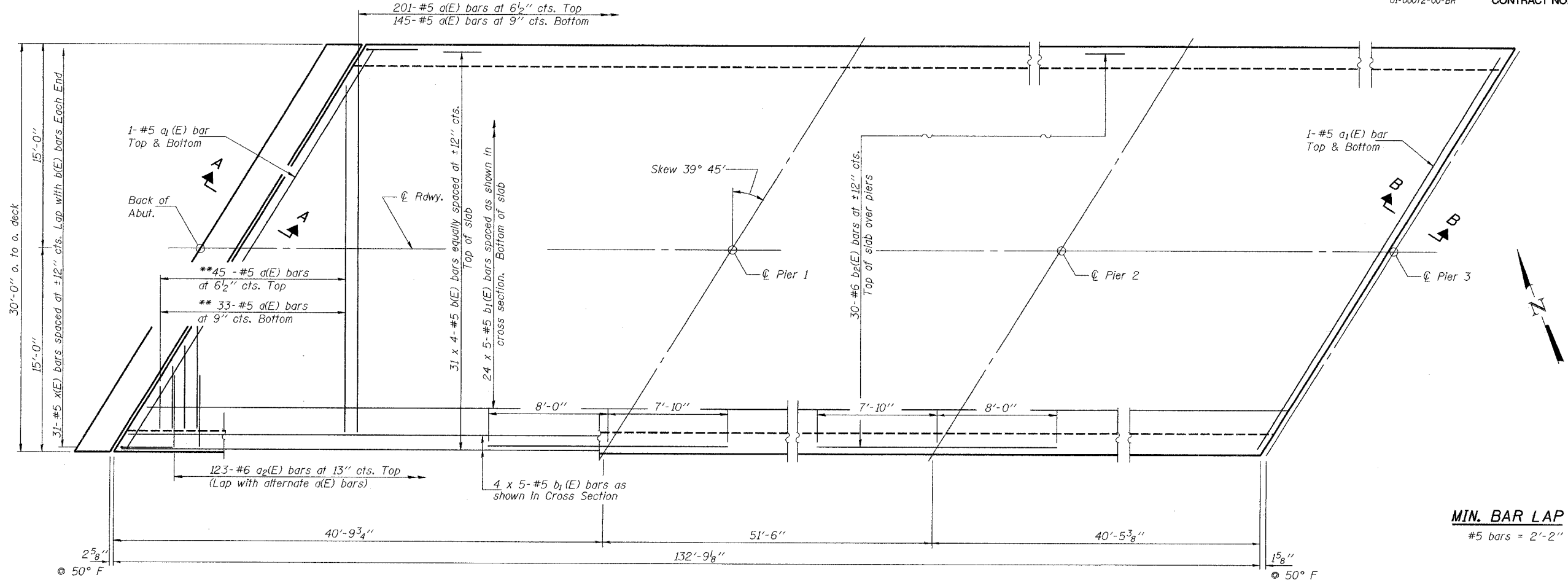


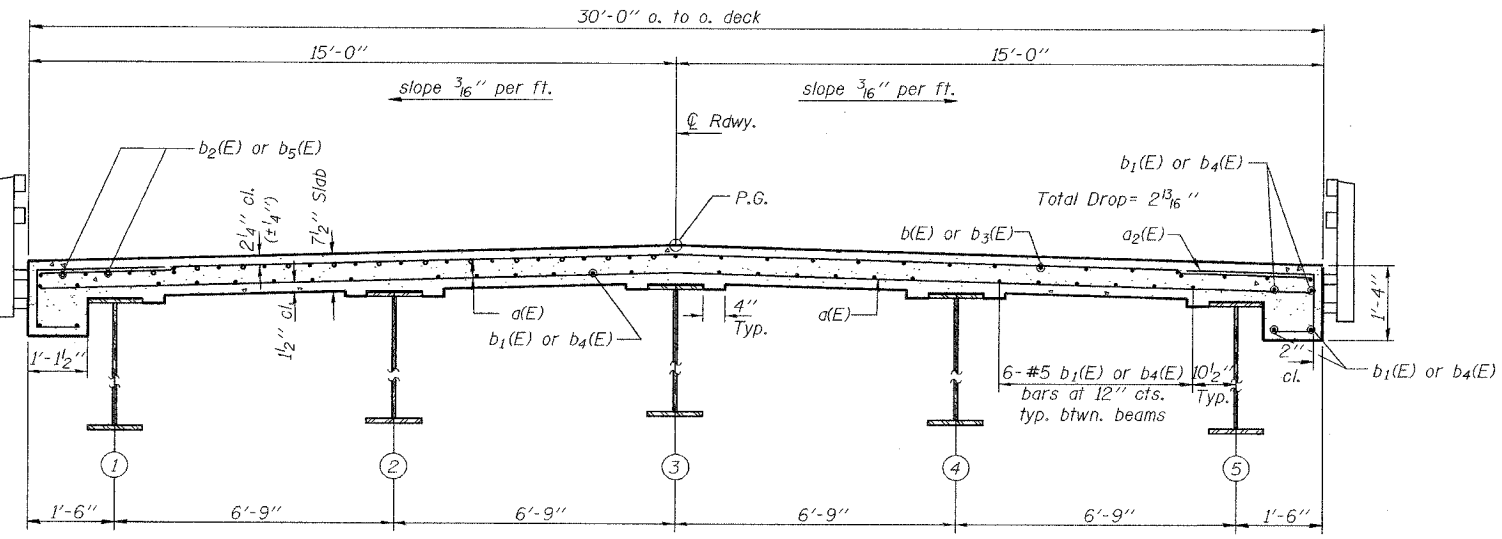
STATE OF ILLINOIS
DEPARTMENT OF TRANSPORTATION

ROUTE NO. F.A.S. 738	SECTION #	COUNTY Greene	TOTAL SHEETS 28	SHEET 9	SHEET NO. 5 20 SHEETS
FED. ROAD DIST. NO. 7		ILLINOIS	FED. AID PROJECT CONTRACT NO. 97249		



PLAN - UNIT 1

** Order a(E) bars full length.
Cut to fit skew and use remainder
of bars in opposite end.



CROSS SECTION
(Looking East)

Notes:
See Sheet 6 of 20 for superstructure details
and Bill of Material.
Reinforcement bars designated (E) shall be
epoxy coated.
Bars indicated thus 31 x 4-#5 etc. indicates
31 lines of bars with 4 lengths per line.
See Sheet 6 of 20 for section A-A and B-B.

SUPERSTRUCTURE DETAILS
(UNIT 1)
F.A.S. 738 OVER
HURRICANE CREEK
SECTION 01-00072-00-BR
GREENE COUNTY
STA. 144+72.46
STR. NO. 031-3005

DESIGNED	ABG	January 21, 2005
CHECKED	ZBU	EXAMINED <i>Thomas J. Domagalaki</i> ENGINEER OF BRIDGE DESIGN
DRAWN	SMS	PASSED <i>Ralph E. Anderson</i> ENGINEER OF BRIDGES AND STRUCTURES
CHECKED	JFS	