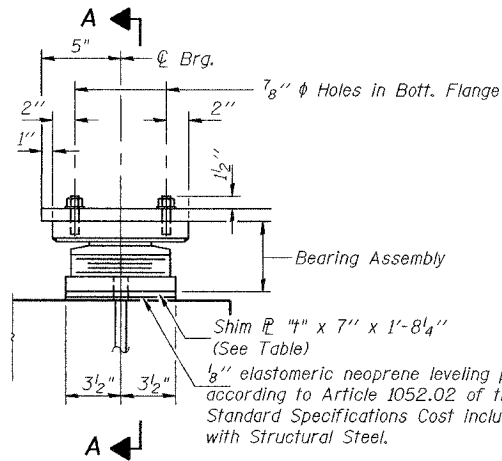
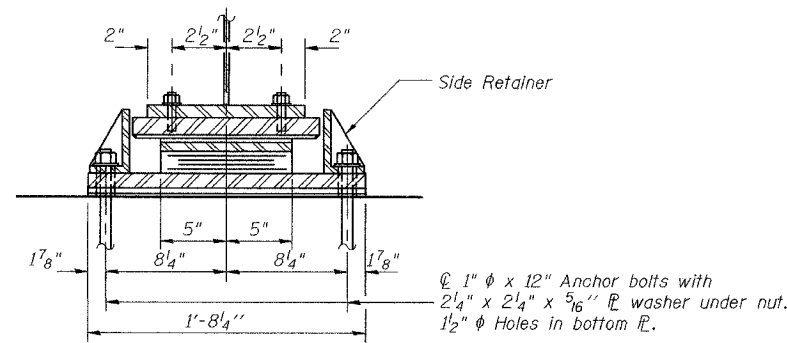


STATE OF ILLINOIS
DEPARTMENT OF TRANSPORTATION

ROUTE NO. F.A.S. 738	SECTION *	COUNTY Greene	SHEETS 28	SHEET 16	SHEET NO. 12 20 SHEETS
FED. ROAD DIST. NO. 7		ILLINOIS	FED. AID PROJECT CONTRACT NO. 97249		



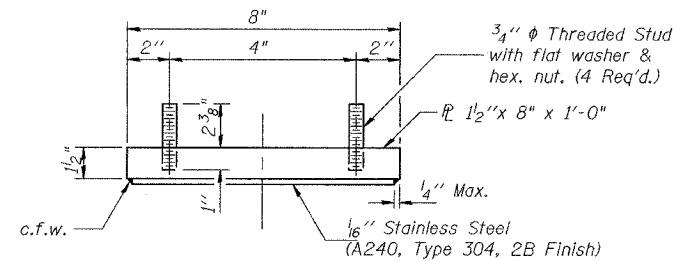
ELEVATION AT PIER 3, W. Brg. and E. Brg.



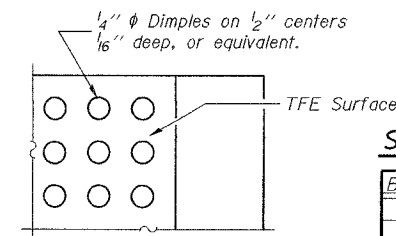
SECTION A-A

TYPE II ELASTOMERIC EXP. BRG.

(10 Required)
Pier 3 W. Brg. and Pier 3 E. Brg.



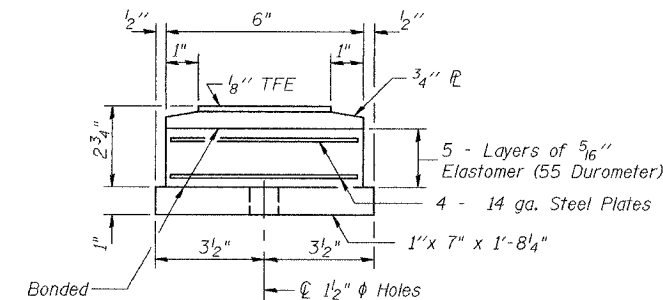
TOP BEARING ASSEMBLY



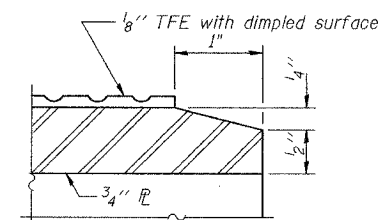
PLAN-TFE SURFACE

SHIM PLATE THICKNESS "I"

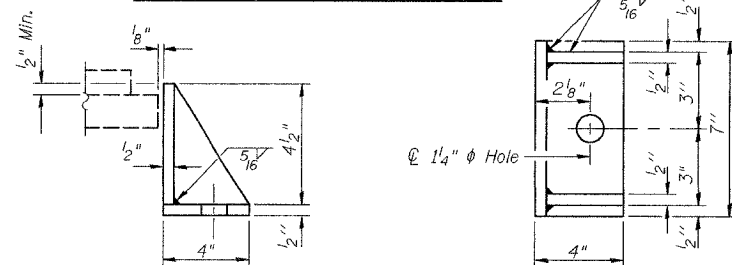
Beam No.	Pier 3 W. Brg.	Pier 3 E. Brg.
1	1 3/4"	2 1/8"
2	1 7/8"	2 1/4"
3	2 5/8"	3 1/8"
4	2"	2 3/8"
5	2"	2 3/8"



BOTTOM BEARING ASSEMBLY



SECTION THRU TFE

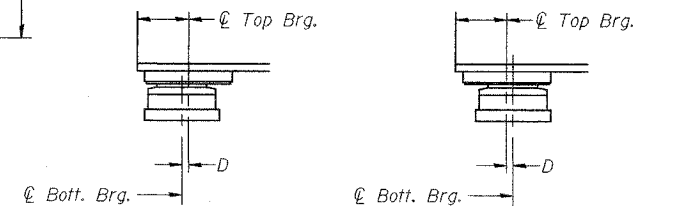


SIDE RETAINER

Equivalent rolled angle with stiffeners will be allowed in lieu of welded plates. Weight included with Structural Steel.

Note: The 1/8" TFE sheet shall be bonded directly to the top steel plate with a two-component, medium viscosity epoxy resin, conforming to the requirements of the Federal Specification MMM-A-134, Type I. The bond agent shall be applied on the full area of the contact surfaces.

Bonding of 1/8" TFE sheet during vulcanizing process will be permitted provided the process and method of adjusting assembly height is approved by the Engineer.



BELOW 50°F. ABOVE 50°F.

(Move bott. brg. away from fixed brg.) (Move bott. brg. toward fixed brg.)

SETTING ANCHOR BOLTS AT EXP. BRG.

D=1/8" per each 100' of expansion for every 15° temp. change from the normal temp. of 50°F.

BILL OF MATERIAL

ITEM	UNIT	TOTAL
Elastomeric Bearing Assembly Type II	Each	10

BEARINGS
F.A.S. 738 OVER
HURRICANE CREEK
SECTION 01-00072-00-BR
GREENE COUNTY
STA. 144+72.46
STR. NO. 031-3005

DESIGNED	JFS
CHECKED	JKK
DRAWN	SMS
CHECKED	JFS

January 21, 2005
EXAMINED *Thomas J. Demagala*
ENGINEER OF BRIDGE DESIGN
PASSED *Ralph E. Anderson*
ENGINEER OF BRIDGES AND STRUCTURES

I-2-E2 10-31-02