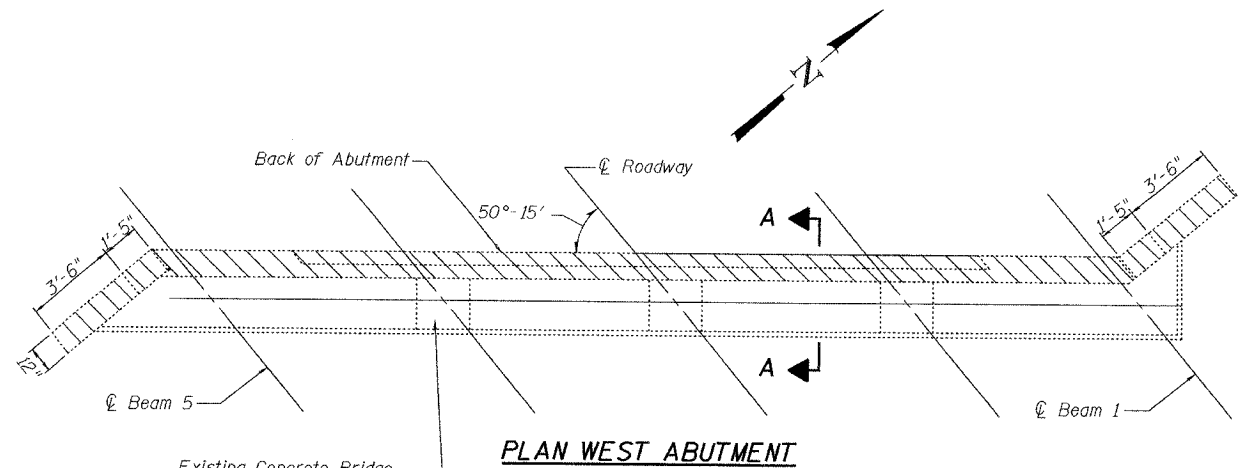
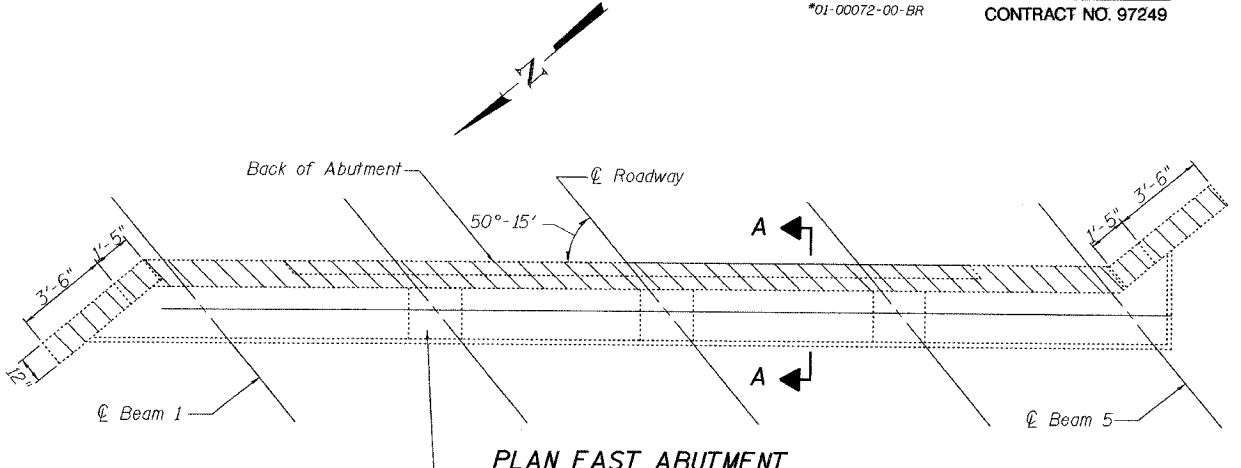


STATE OF ILLINOIS
DEPARTMENT OF TRANSPORTATION

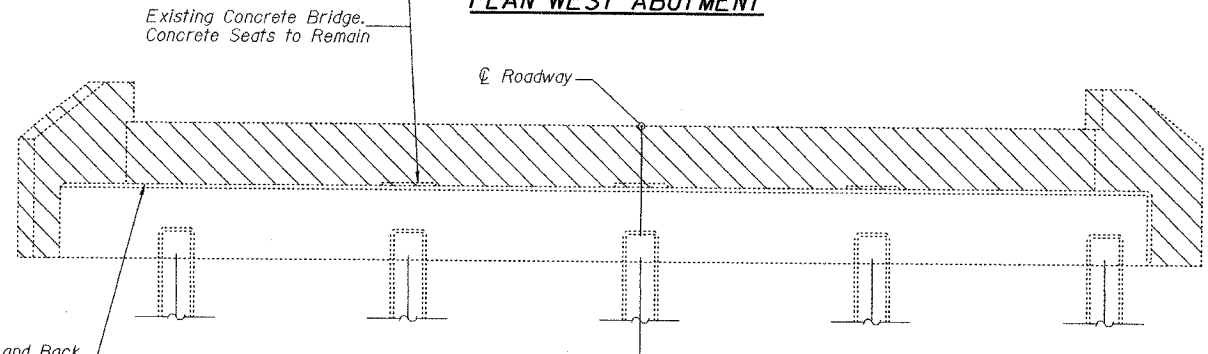
ROUTE NO. F.A.S. 738	SECTION *	COUNTY Greene	SHEET NO. 26	TOTAL SHEETS 20	SHEET NO. 16 20 SHEETS
FED. ROAD DIST. NO. 7		ILLINOIS	FED. AID PROJECT CONTRACT NO. 97249		
*01-00072-00-BR					



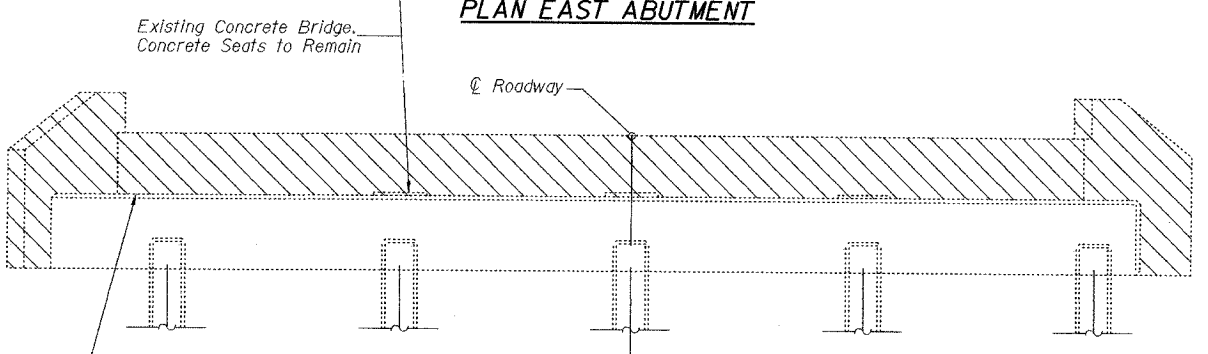
PLAN WEST ABUTMENT



PLAN EAST ABUTMENT



ELEVATION WEST ABUTMENT
(Looking West)



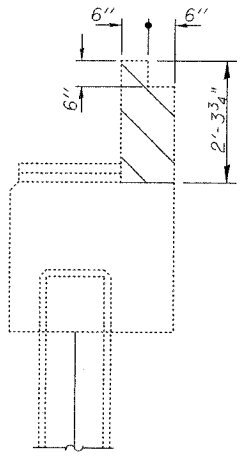
ELEVATION EAST ABUTMENT
(Looking East)

Sawcut Front and Back Faces $\frac{3}{4}$ " deep before removing concrete

Sawcut Front and Back Faces $\frac{3}{4}$ " deep before removing concrete

BILL OF MATERIAL

Item	Unit	Total
Concrete Removal	Cu. Yd.	8.6



SECTION A-A

Notes: Hatched areas indicate "Concrete Removal". Existing reinforcement extending into the new backwall shall be cleaned, straightened and incorporated into new construction. Cost included with "Concrete Removal."

**CONCRETE REMOVAL
(EAST AND WEST ABUTMENTS)**
F.A.S. 738 OVER
HURRICANE CREEK
SECTION 01-00072-00-BR
GREENE COUNTY
STA. 144+72.46
STR. NO. 031-3005

DESIGNED	ABG
CHECKED	ZBU
DRAWN	SMS
CHECKED	JFS

January 21, 2005
EXAMINED *Thomas J. Demagalicki*
ENGINEER OF STRUCTURE DESIGN
PASSED *Ralph E. Anderson*
ENGINEER OF BRIDGES AND STRUCTURES