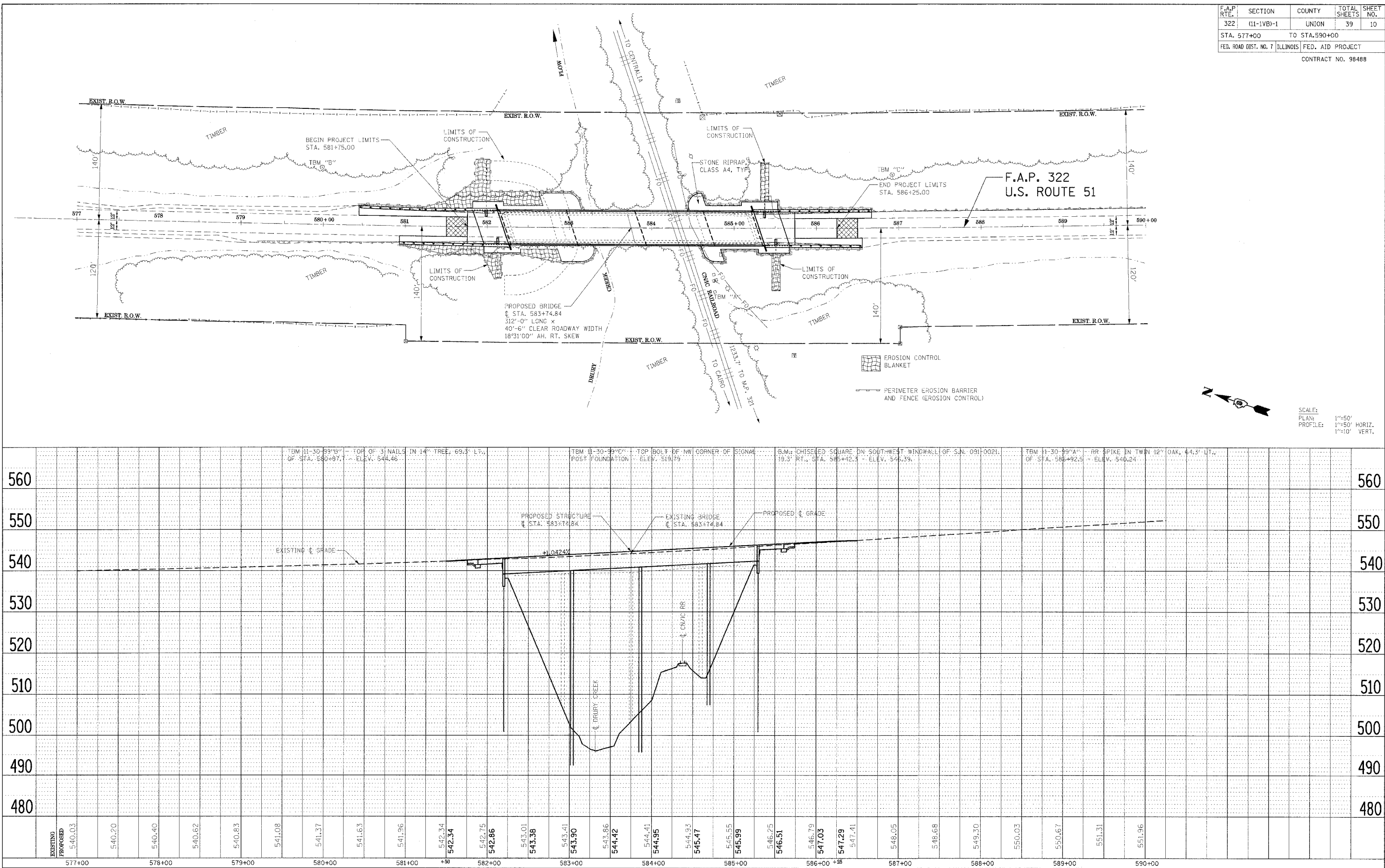


F.A.P. RTE.	SECTION	COUNTY	TOTAL SHEETS	SHEET NO.
322	(11-1VB)-1	UNION	39	10
STA. 577+00		TO STA. 590+00		
FED. ROAD DIST. NO. 7 ILLINOIS FED. AID PROJECT				
CONTRACT NO. 98488				

PLAN	SURVEYED	DATE
NO. 1	BY	
NO. 2	CHECKED	
NO. 3	DATE	

PROFILE	SURVEYED	DATE
NO. 1	BY	
NO. 2	CHECKED	
NO. 3	DATE	

PLOT DATE = 3/29/2005  
 FILE NAME = s:\projects\98488\11-1VB\erosion control.dwg  
 PLOT SCALE = 1/8" = 1' IN.  
 USER NAME = dickerhoff



EROSION CONTROL PLAN PROPOSED U.S. ROUTE 51 BRIDGE OVER DRURY CREEK AND CNIC RAILROAD