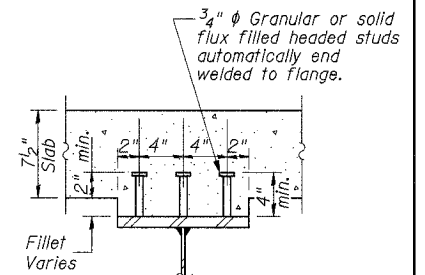
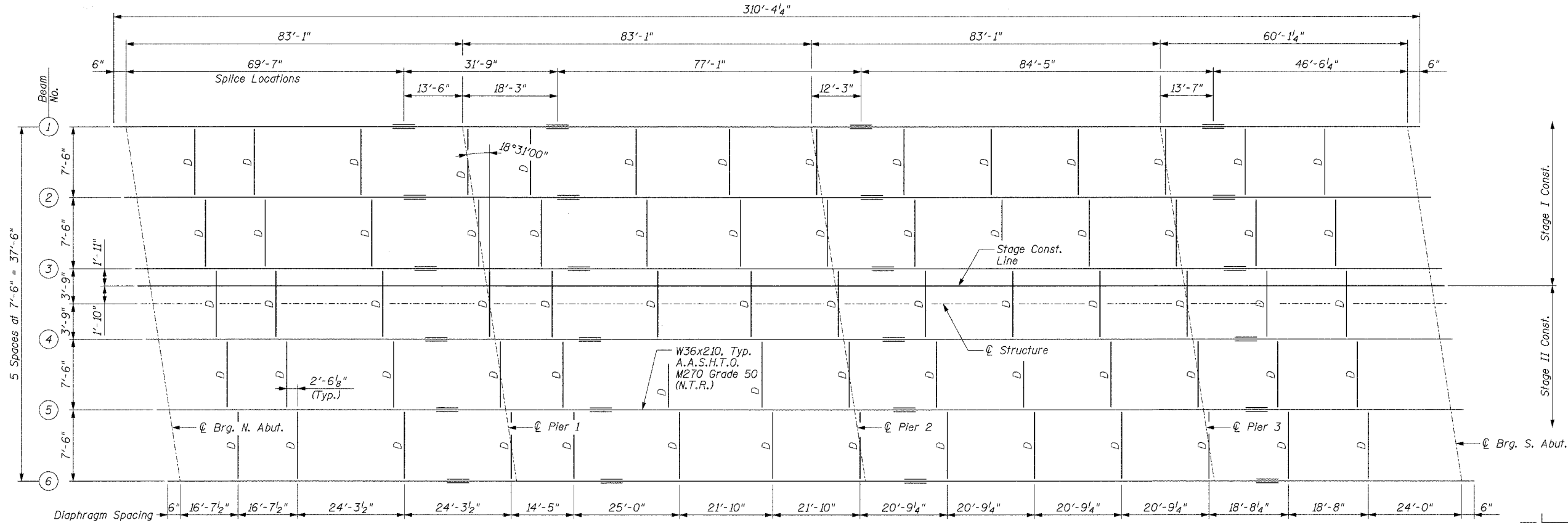


STATE OF ILLINOIS
DEPARTMENT OF TRANSPORTATION

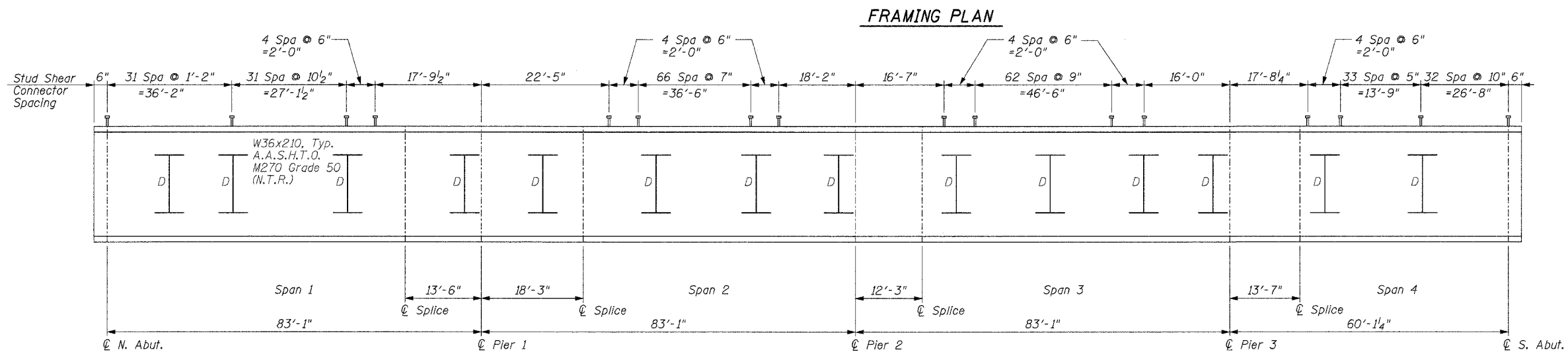
| | | | | |
|-----------------------|----------|-------------------|---------------------------------|-----------|
| ROUTE NO. | SECTION | COUNTY | TOTAL SHEETS | SHEET NO. |
| F.A.P. 322 | * | UNION | 39 | 29 |
| FED. ROAD DIST. NO. 7 | ILLINOIS | FED. AID PROJECT- | * (11-IVB)-1 CONTRACT NO. 98488 | |



SECTION A-A
(No. Req'd. 5094)

NOTES

All beams shall be A.A.S.H.T.O. M270, Grade 50 steel (N.T.R.).
"N.T.R." Denotes notch toughness requirements. Structural steel designated with (N.T.R.) shall conform to the supplemental requirements for notch toughness (Zone 2). These components are the W36x210 beams and all splice plate material of the steel beams.



BEAM ELEVATION
Not to scale

FRAMING PLAN
U.S. ROUTE 51 OVER TRIBUTARY TO
DRURY CREEK AND CN/IC RAILROAD
FAP 322 - SECTION (11-IVB)-1
UNION COUNTY
STATION 583+74.84
STRUCTURE NO. 091-0073

| | |
|----------|-----|
| DESIGNED | GLH |
| CHECKED | TML |
| DRAWN | RJN |
| CHECKED | TML |

03/22/2005