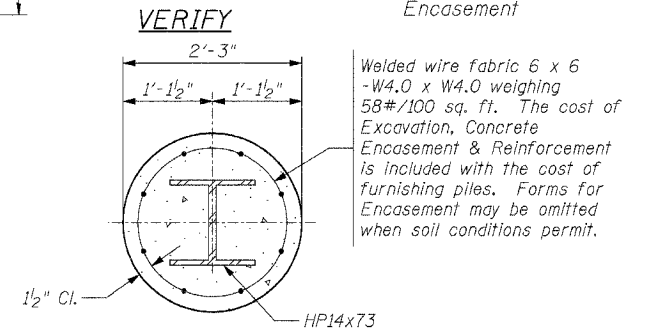
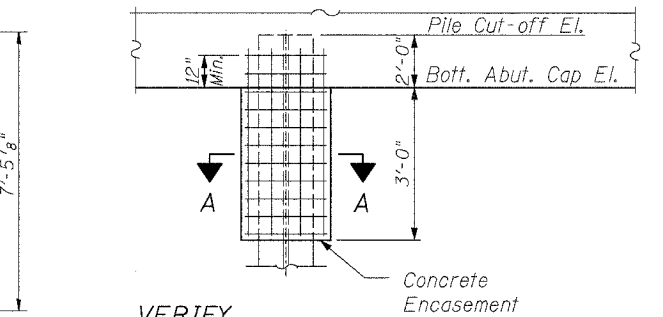
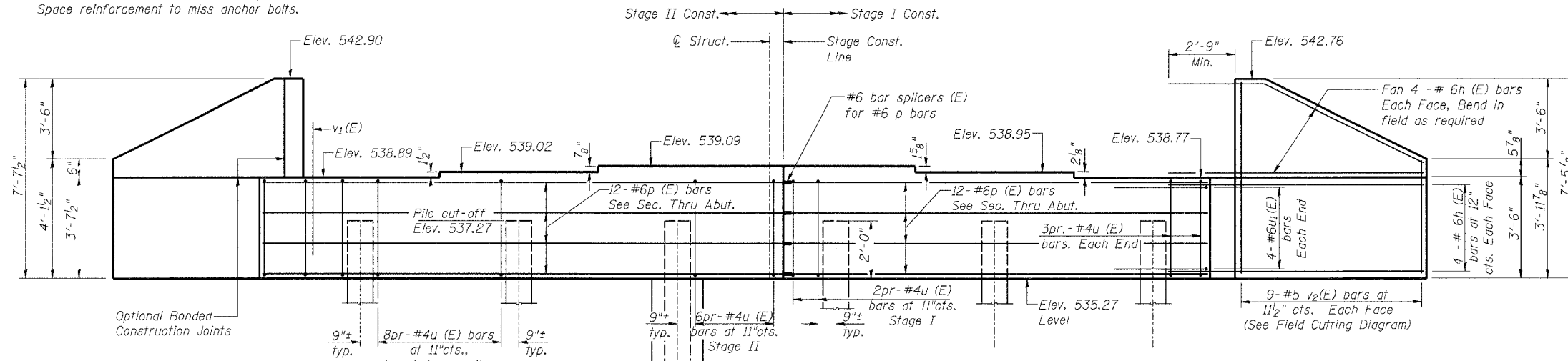


STATE OF ILLINOIS  
DEPARTMENT OF TRANSPORTATION

ROUTE NO.	SECTION	COUNTY	TOTAL SHEETS	SHEET NO.	SHEET NO. 15 22 SHEETS
F.A.P. 322	*	UNION	39	32	
FED. ROAD DIST. NO. 7	ILLINOIS	FED. AID PROJECT-	* (11-IVB)-1 CONTRACT NO. 98488		

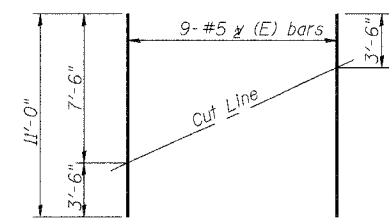
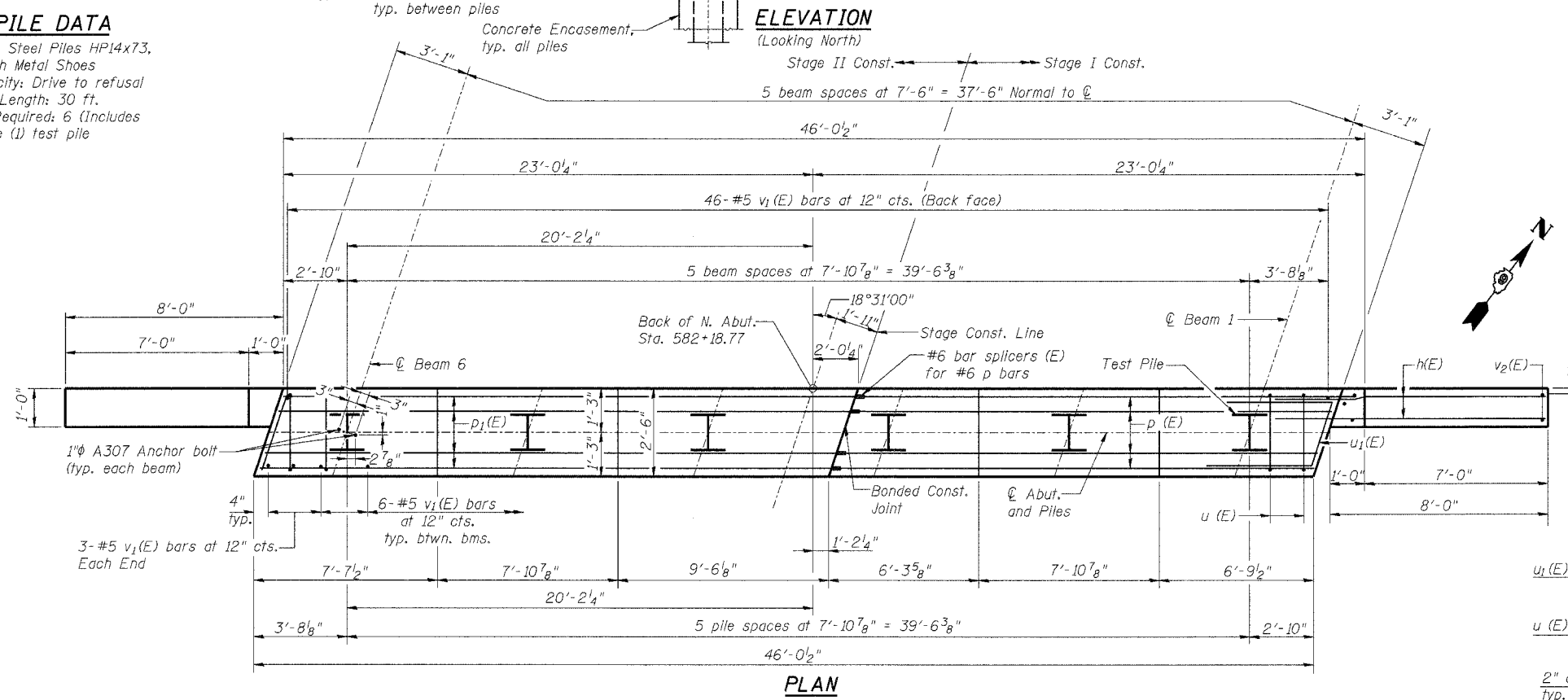
Notes: Pour steps monolithically with cap.  
Reinforcement bars designated (E)  
shall be epoxy coated.  
See sheet 2 of 22 for foundation plan.  
Space reinforcement to miss anchor bolts.



SECTION A-A  
PILE ENCASEMENT DETAIL

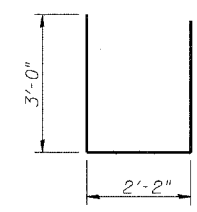
**PILE DATA**

Type: Steel Piles HP14x73,  
with Metal Shoes  
Capacity: Drive to refusal  
Est. Length: 30 ft.  
No. Required: 6 (Includes  
one (1) test pile)

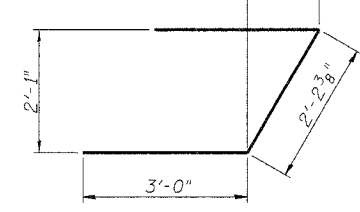


**FIELD CUTTING DIAGRAM**

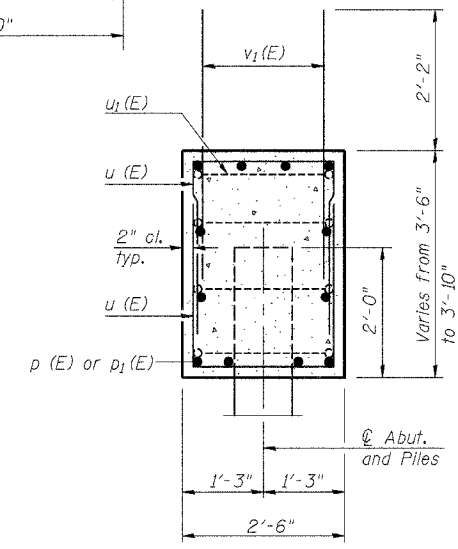
Order v<sub>2</sub>(E) full length. Cut as shown and  
use remainder of bars in opposite face.



BARS u (E)



BAR u<sub>1</sub>(E)



SEC. THRU ABUT.

**BILL OF MATERIAL**

Bar No.	Size	Length	Shape
h(E)	#6	11'-6"	—
p(E)	#6	20'-9"	—
p <sub>1</sub> (E)	#6	24'-9"	—
u(E)	#4	8'-2"	U
u <sub>1</sub> (E)	#6	8'-3"	7
v <sub>1</sub> (E)	#5	4'-4"	—
v <sub>2</sub> (E)	#5	11'-0"	—
Concrete Structures	Cu. Yd.	19.8	
Reinforcement Bars, Epoxy Coated	Pound	2330	
Structure Excavation	Cu. Yd.	101	
Bar Splicers	Each	12	
Furnishing Steel Piles	Foot	150	
Driving Steel Piles	Foot	150	
Test Pile	Each	1	
Metal Shoes	Each	5	

NORTH ABUTMENT  
U.S. ROUTE 51 OVER TRIBUTARY TO  
DRURY CREEK AND CN/IC RAILROAD  
FAP 322 - SECTION (11-IVB)-1  
UNION COUNTY  
STATION 583+74.84  
STRUCTURE NO. 091-0073

DESIGNED	GLH
CHECKED	TML
DRAWN	RJN
CHECKED	TML
AI-R	9-01-03

02/15/2005