

98896

F.A.P. RITE	SECTION	COUNTY	TOTAL SHEETS	SHEET NO.
869	(103)I	SALINE	64	1

STATE OF ILLINOIS  
DEPARTMENT OF TRANSPORTATION  
DIVISION OF HIGHWAYS  
**PROPOSED  
HIGHWAY PLANS**

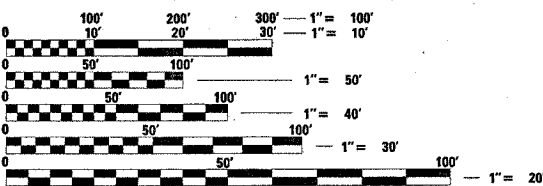
ROUTE: FAP 869 (IL 34)  
SECTION: (103)I  
COUNTY: SALINE  
C-99-005-05

FOR INDEX OF SHEETS, SEE SHEET NO. 2  
FOR SUMMARY OF QUANTITIES, SEE SHEET NO. 5-6

STATION EQUATIONS:  
NONE

2004 TRAFFIC DATA:  
ADT: 2180  
TRUCKS: 6.9%

TOWNSHIPS:  
GALATIA



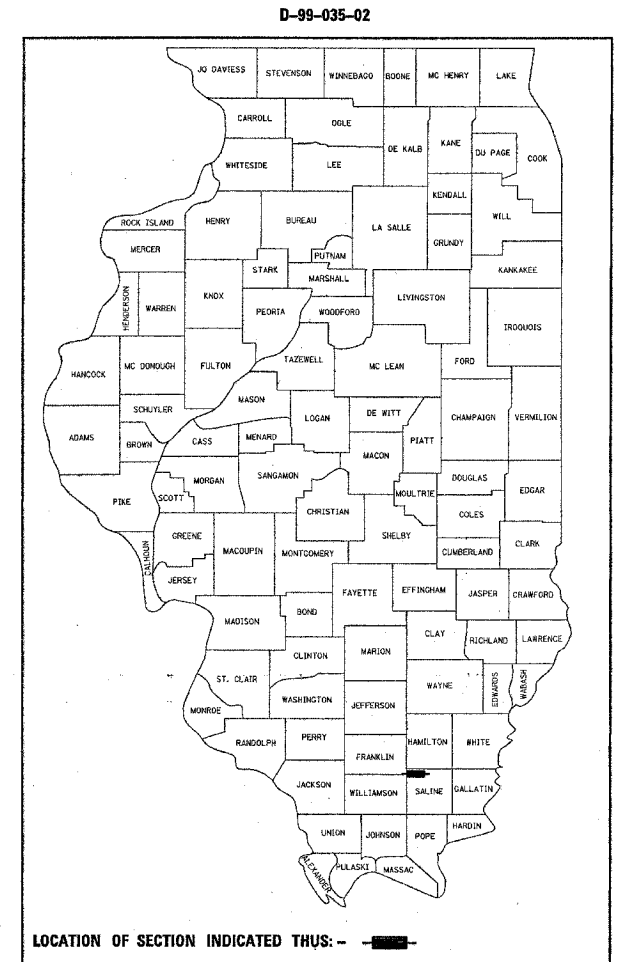
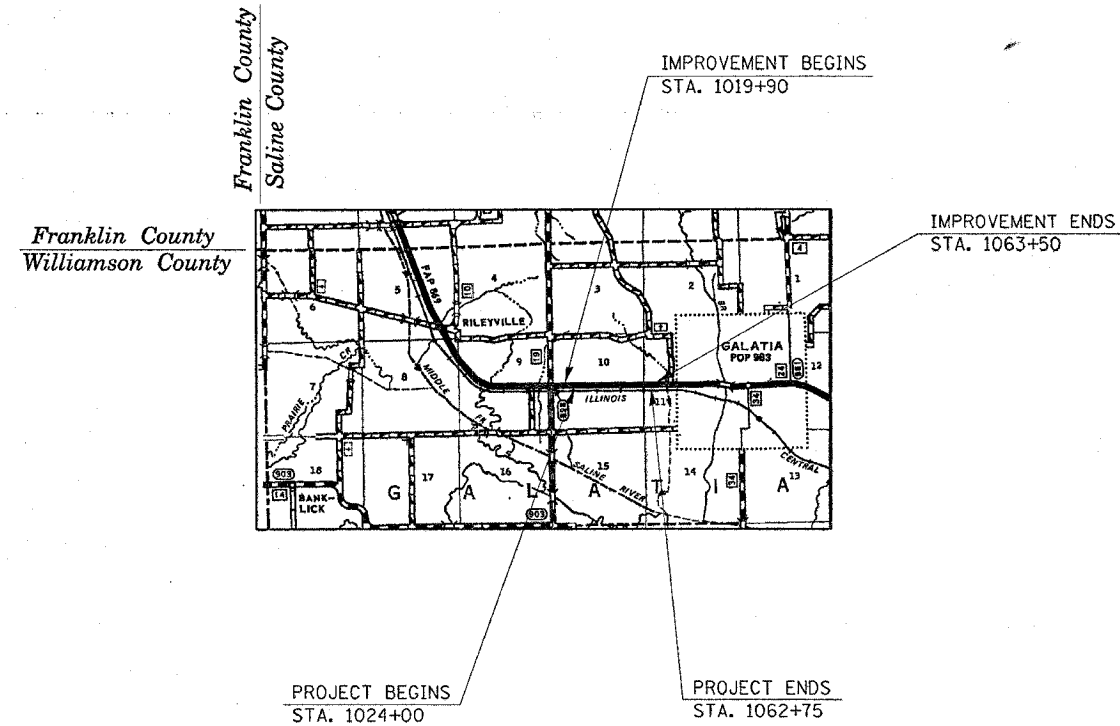
FULL SIZE PLANS HAVE BEEN PREPARED USING STANDARD ENGINEERING SCALES. REDUCED SIZED PLANS WILL NOT CONFORM TO STANDARD SCALES. IN MAKING MEASUREMENTS ON REDUCED PLANS, THE ABOVE SCALES MAY BE USED.

J.U.L.I.E.  
JOINT UTILITY LOCATION INFORMATION FOR EXCAVATION  
1-800-892-0123 or www.julie1call.com

CONTRACT NO. 98896

GROSS LENGTH OF IMPROVEMENT: = 4360' = 0.83 MILES  
NET LENGTH OF IMPROVEMENT: = 4360' = 0.83 MILES

GROSS LENGTH OF PROJECT: = 3875' = 0.73 MILES  
NET LENGTH OF PROJECT: = 3875' = 0.73 MILES



LOCATION OF SECTION INDICATED THUS: - [black box] -



APPROX. SCALE: 1" = 1 MILE

STATE OF ILLINOIS  
DEPARTMENT OF TRANSPORTATION  
DIVISION OF HIGHWAYS

SUBMITTED Feb. 25 20 05

Mike Hene  
DEPUTY DIRECTOR OF HIGHWAYS, REGION ENGINEER

Mike Hene  
ENGINEER OF DESIGN AND ENVIRONMENT

Victor Moden  
DIRECTOR OF HIGHWAYS, CHIEF ENGINEER

**PRINTED BY THE AUTHORITY  
OF THE STATE OF ILLINOIS**

PROJECT ENGINEER: LARRY ANDERSON  
SQUAD LEADER: CINDY DETERING  
(618) 549-2171  
CENTREX 782-4554