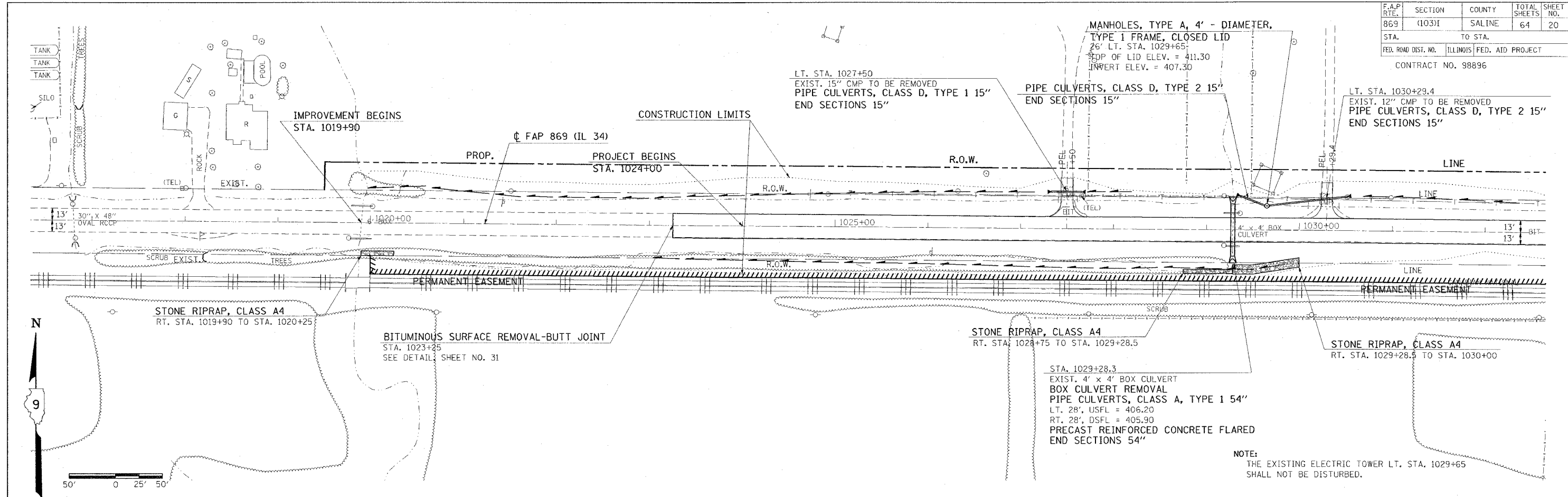
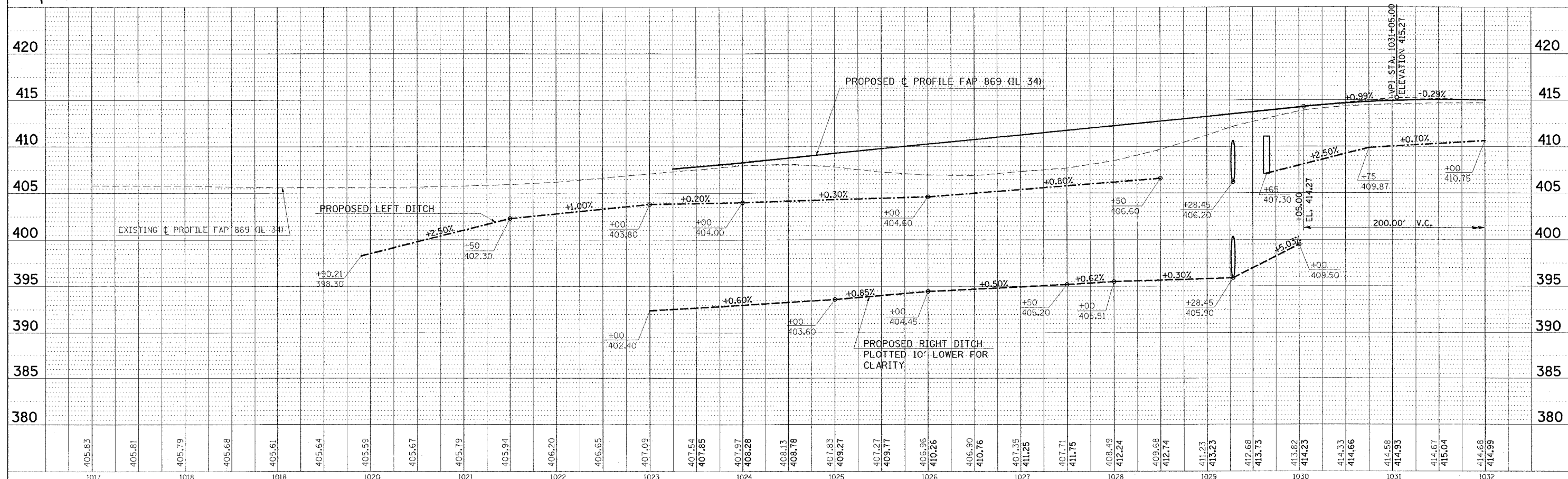


F.A.P. RTE.	SECTION	COUNTY	TOTAL SHEETS	SHEET NO.
869	(103)I	SALINE	64	20
STA. 1017+00 TO STA. 1032+00		FED. ROAD DIST. NO. ILLINOIS FED. AID PROJECT		
CONTRACT NO. 98896				



NOTE:  
THE EXISTING ELECTRIC TOWER LT. STA. 1029+65  
SHALL NOT BE DISTURBED.



PLAN PROFILE SHEET STA. 1017+00 TO STA. 1032+00

DATE	BY	REVISION

DATE	BY	REVISION

Friday January 21, 2006 @ 2:17:58 PM  
 c:\p\projects\1032\1032.dwg  
 3dml.ctb  
 L:\2-20-24-63  
 L:\2-20-24-63