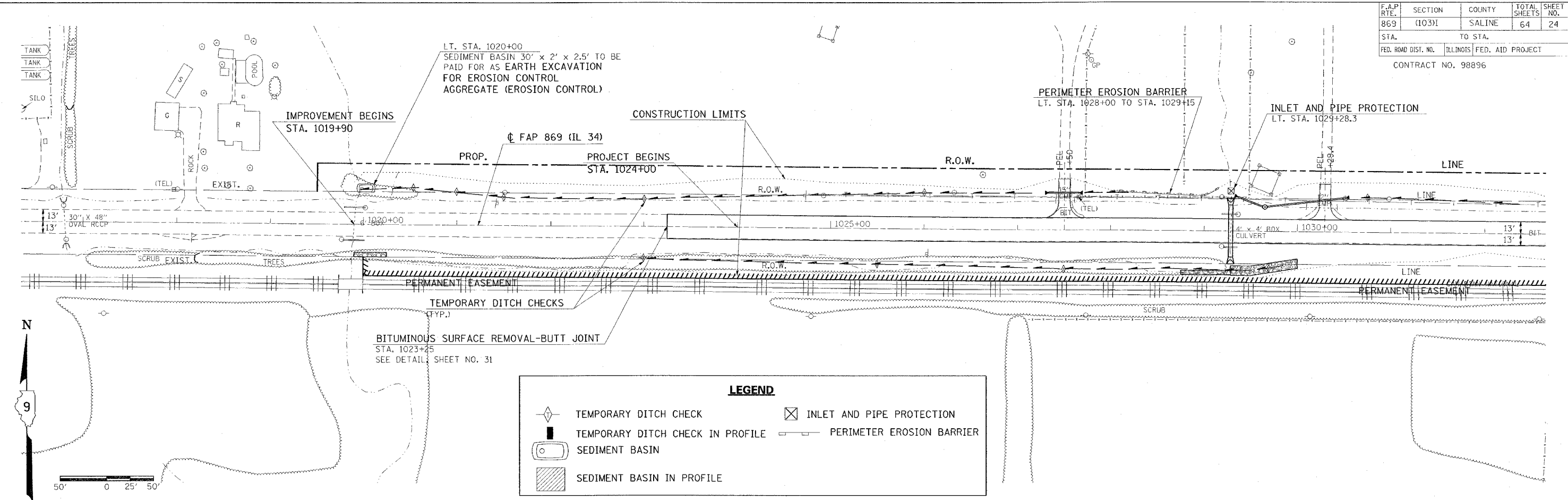
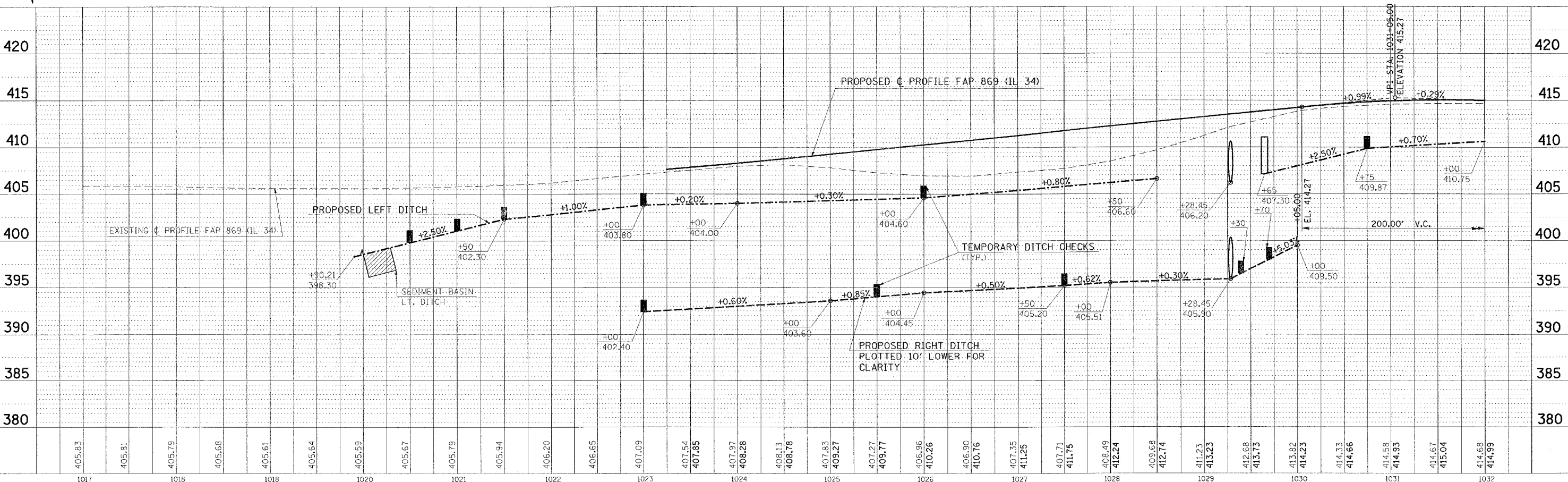


F.A.P. RTE.	SECTION	COUNTY	TOTAL SHEETS	SHEET NO.
869	(103)I	SALINE	64	24
STA.	TO STA.			
FED. ROAD DIST. NO.	ILLINOIS	FED. AID PROJECT		
CONTRACT NO. 98896				



**LEGEND**

- TEMPORARY DITCH CHECK
- TEMPORARY DITCH CHECK IN PROFILE
- SEDIMENT BASIN
- SEDIMENT BASIN IN PROFILE
- INLET AND PIPE PROTECTION
- PERIMETER EROSION BARRIER



**TEMPORARY EROSION CONTROL STA. 1017+00 TO STA. 1032+00**

DATE: \_\_\_\_\_ BY: \_\_\_\_\_  
 PLAN  
 DESIGNED: \_\_\_\_\_  
 CHECKED: \_\_\_\_\_  
 PLOTTED: \_\_\_\_\_  
 NOTE BOOK NO. \_\_\_\_\_  
 CAD FILE NAME: \_\_\_\_\_

DATE: \_\_\_\_\_ BY: \_\_\_\_\_  
 PROFILE  
 GRADES CHECKED: \_\_\_\_\_  
 STRUCTURE NOTATIONS CHECKED: \_\_\_\_\_  
 NOTE BOOK NO. \_\_\_\_\_

Friday, January 21, 2006 8:26:40 PM  
 c:\p\projects\08025\08025.dwg  
 3dmini.ctb  
 LV:2-25-05-49-51-81.63  
 LV:2-25-05-37-63