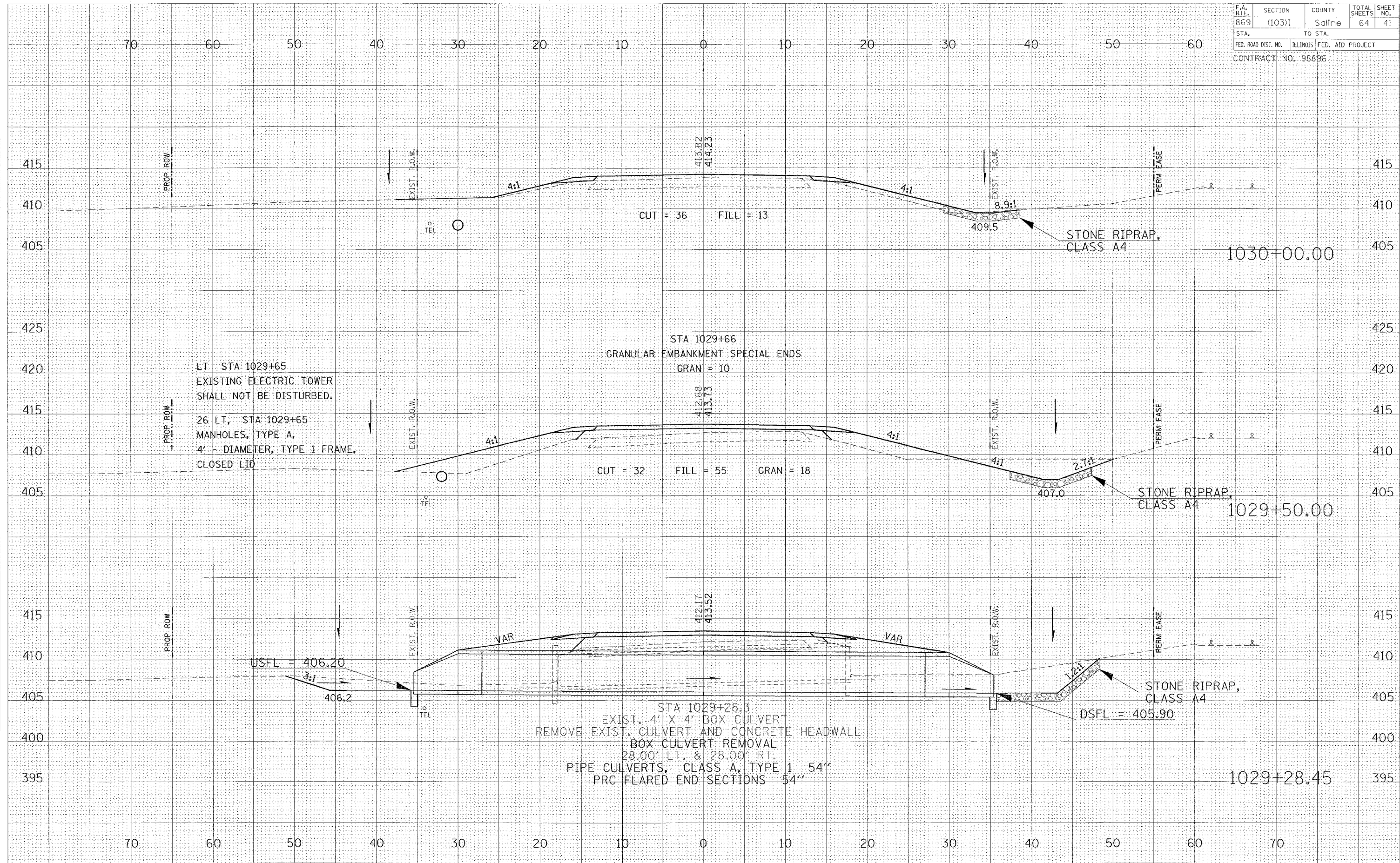


F.A. RTE.	SECTION	COUNTY	TOTAL SHEETS	SHEET NO.
869	(103)1	Saline	64	41
STA.	TO STA.			
FED. ROAD DIST. NO.	ILLINOIS	FED. AID PROJECT		
CONTRACT NO. 98896				

DATE: _____
 BY: _____
 SURVEYED: _____
 PLOTTED: _____
 TEMPLATE: _____
 NOTE BOOK: _____
 AREAS CHECKED: _____

DATE: _____
 BY: _____
 SURVEYED: _____
 PLOTTED: _____
 TEMPLATE: _____
 NOTE BOOK: _____
 AREAS CHECKED: _____

Friday January 21, 2005



LT STA 1029+65
 EXISTING ELECTRIC TOWER
 SHALL NOT BE DISTURBED.
 26" LT, STA 1029+65
 MANHOLES, TYPE A,
 4' - DIAMETER, TYPE 1 FRAME,
 CLOSED LID

STA 1029+66
 GRANULAR EMBANKMENT SPECIAL ENDS
 GRAN = 10

STA 1029+28.3
 EXIST. 4' X 4' BOX CULVERT
 REMOVE EXIST. CULVERT AND CONCRETE HEADWALL
 BOX CULVERT REMOVAL
 28.00' LT. & 28.00' RT.
 PIPE CULVERTS, CLASS A, TYPE 1 54"
 PRC FLARED END SECTIONS 54"