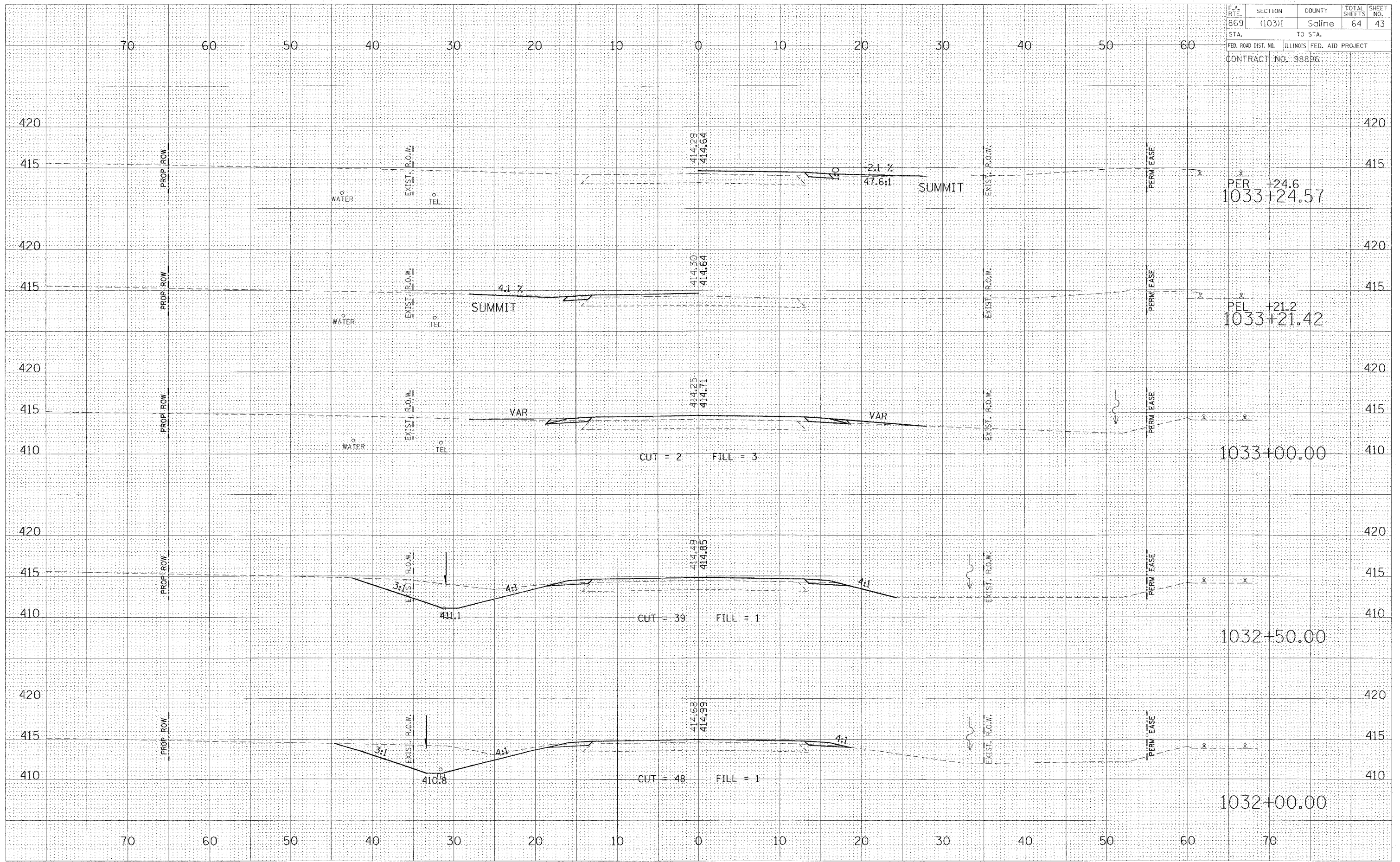


DATE	
BY	
FINAL SURVEY	SUBMITTED
NOTE BOOK	PLOTTED
NO.	TEMPLATE
	AREAS CHECKED

DATE	
BY	
ORIGINAL SURVEY	SUBMITTED
NOTE BOOK	PLOTTED
NO.	TEMPLATE
	AREAS CHECKED

Friday January 21, 2005

F.A. DIST.	SECTION	COUNTY	TOTAL SHEETS	SHEET NO.
869	(103)1	Saline	64	43
STA.	TO STA.			
FED. ROAD DIST. NO.		ILLINOIS	FED. AID PROJECT	
CONTRACT NO. 98896				



STA 1032+00 TO STA 1033+24.57 - IL 34