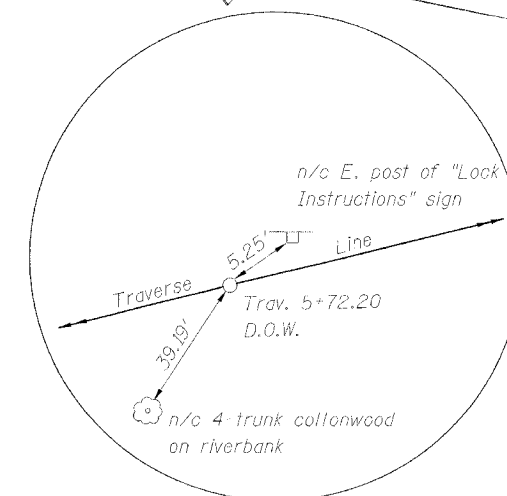
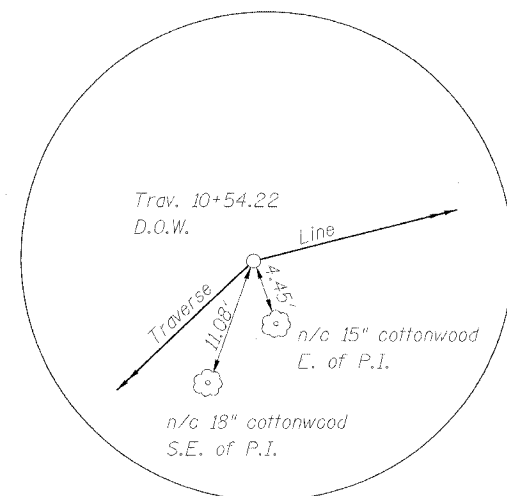
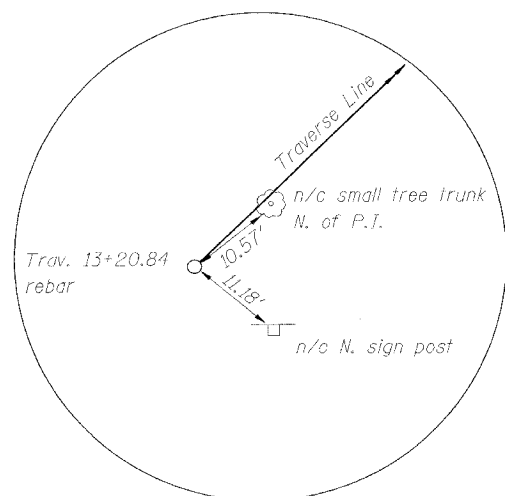
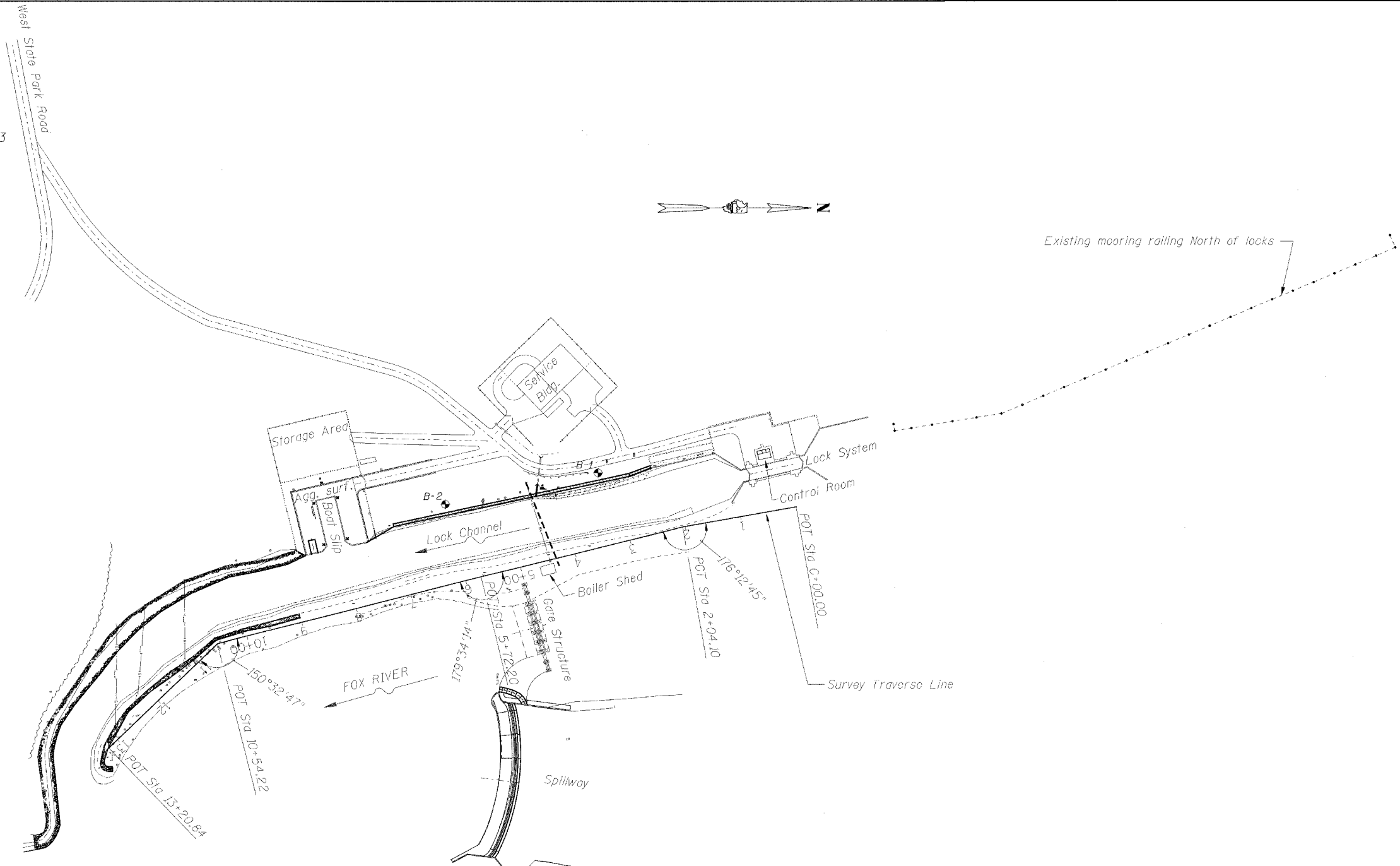
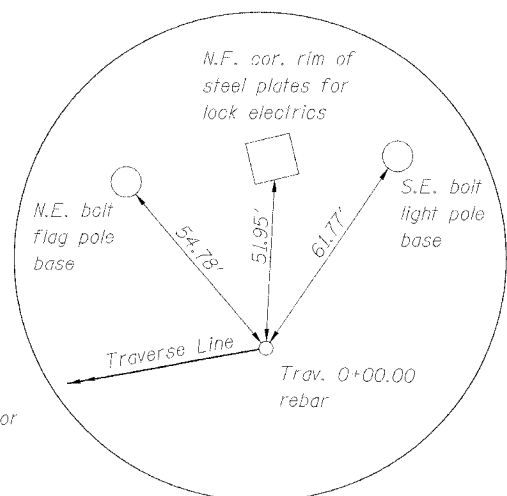


T.B.M.: Chis. square left D.S. end of lockwall Elev. 741.77
 T.B.M. #1: Lag screw set in root of 18" elm ±100' from S. end of island Elev. 739.28
 T.B.M.: Monument W. of gage house 14' from S.W. cor. on island in middle of river. Elev. 742.93



No Reference Marks for Sta. 2+04.10 rebar



TRAVERSE REFERENCE MARKS

Designed By Tmm checked by JLF
 Drawn By JLF checked by Tmm
 05/05/2005 10:55:56 AM H:\Owr\Proj\mpl\Projects\stratton_mchenry\JGN\Site plan.dgn