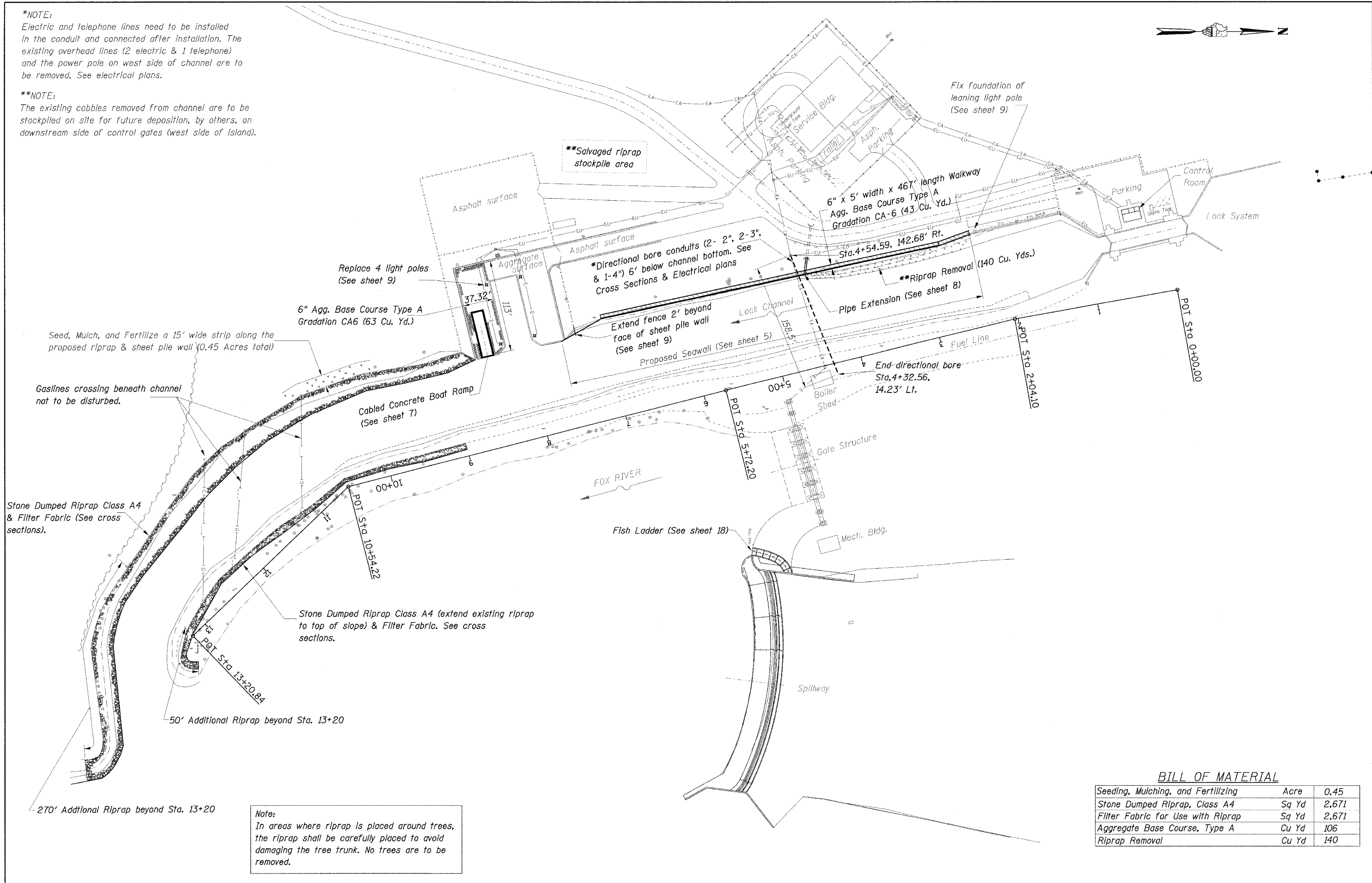


***NOTE:**
Electric and telephone lines need to be installed in the conduit and connected after installation. The existing overhead lines (2 electric & 1 telephone) and the power pole on west side of channel are to be removed. See electrical plans.

****NOTE:**
The existing cobbles removed from channel are to be stockpiled on site for future deposition, by others, on downstream side of control gates (west side of island).



Note:
In areas where riprap is placed around trees, the riprap shall be carefully placed to avoid damaging the tree trunk. No trees are to be removed.

BILL OF MATERIAL

Seeding, Mulching, and Fertilizing	Acre	0.45
Stone Dumped Riprap, Class A4	Sq Yd	2,671
Filter Fabric for Use with Riprap	Sq Yd	2,671
Aggregate Base Course, Type A	Cu Yd	106
Riprap Removal	Cu Yd	140

05/05/2005 11:00:35 AM H:\0wrProj\mpl\Projects\stratton_mchenry\mcherry\General\plan.dgn
 Designed by Timm checked by J.F.
 Drawn by J.F. checked by Timm