

NEW TREE CLEARING (AR151)
BRUSH CLEARING INC. TO UNCL. EXC. (AR152)

NEW LANDSCAPING LIMITS
(AR901 / 800868)

ROO10
TOTAL SHEETS = 24



NEW 4' BITUMINOUS SURFACE (AR401)/
8' CRUSHED AGG. BASE (AR209)/
EXIST. PAVEMENT TO BE
PULVERIZED (AR800861)

NEW FGE (AR209)

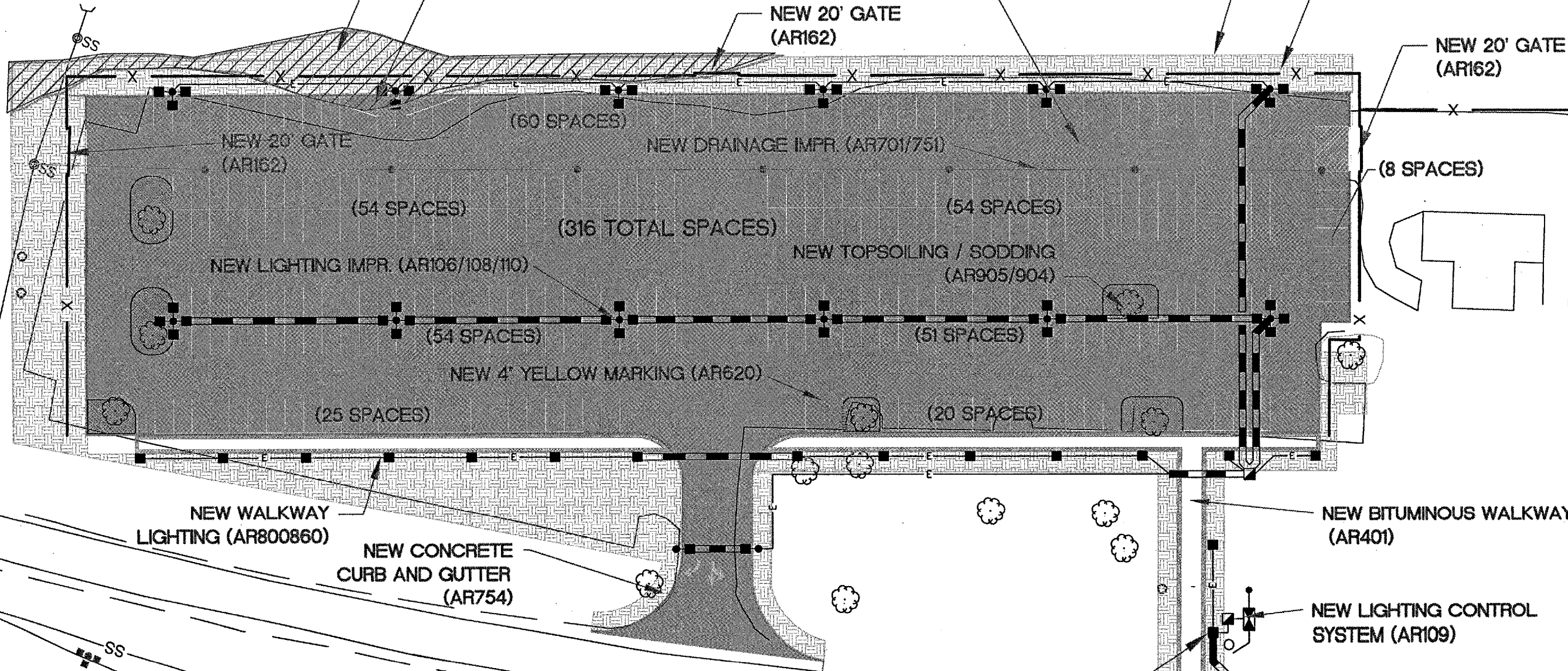
NEW 8' PERIMETER
FENCING (AR162)

NEW 20' GATE
(AR162)

NEW 20' GATE
(AR162)

REVISIONS		
NUMBER	BY	DATE

0 1
THIS BAR IS EQUAL TO 1"
AT FULL SCALE (17 X 11).



GREATER ROCKFORD AIRPORT AUTHORITY
ROCKFORD, ILLINOIS
ILLINOIS PROJECT: RFD-2820
NORTH AND WEST AUTO PARKING
SITE PLAN

PARKING SUMMARY

NORTH ROW:	50 Spaces
NORTHWEST ROW:	54 Spaces
NORTHEAST ROW:	54 Spaces
SOUTHWEST ROW:	54 Spaces
SOUTHWEST ROW:	51 Spaces
SOUTH ROW (WEST):	25 Spaces
SOUTH ROW (EAST):	20 Spaces
EAST ROW:	8 Spaces
Total =	316 Spaces

AIRPORT DRIVE

NEW CROSSWALK
LIGHTING SYSTEM
(AR800859)

AIRPORT TERMINAL
AUTO PARKING LOT

CMT
CRAWFORD, MURPHY & TILLY, INC.
CONSULTING ENGINEERS

Northwest
ChicagoLand
International
Airport

DESIGN BY: JGP
DRAWN BY: CMT
CHECKED BY: JGP
APPROVED BY: *[Signature]*
DATE: 5.13.2005
JOB No: 05258-04-00

3 (SP1)
SHEET 3 OF 24 SHEETS