


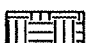
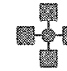


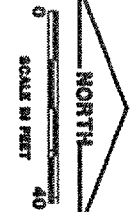
NOTES

- 1) THE ROUTING OF THE NEW CABLES AND CONDUITS SHOWN IS FOR INFORMATION ONLY. THE EXACT ROUTING SHALL BE COORDINATED WITH THE RESIDENT ENGINEER. ALL CONDUITS SHALL BE BURIED A MIN 30" BELOW FINISHED GRADE.
- 2) IT IS CONTRACTOR'S RESPONSIBILITY TO FIELD VERIFY THE LOCATION OF EXISTING UTILITIES. ANY DAMAGE TO EXISTING UTILITIES SHALL BE REPAIRED IMMEDIATELY AT THE CONTRACTOR'S EXPENSE.
- 3) ANY SPLICES TO THE NEW CABLES SHALL BE MADE INSIDE THE HANDHOLES OR POLE BASES. NO DIRECT BURIED SPLICES WILL BE ALLOWED. ALL SPLICES SHALL BE WATERPROOF AND SHALL HAVE HEAT SHRINK TUBING OVER ENTIRE SPLICE.
- 4) THE COST OF PAVEMENT REMOVAL AND REPLACEMENT OF PAVEMENT SHALL BE INCIDENTAL TO THE INSTALLATION OF THE DIRECT BURIED CONDUIT.
- 5) GROUND ROD SHALL BE 3/4" DIA. x 10' LONG. CONTRACTOR SHALL ROUTE 1 #8 GND. WIRE FROM GROUND ROD TO POWER PANEL. GROUND ROD SHALL BE BURIED 1'-0" BELOW FINISHED GRADE. CONNECTIONS TO GROUND ROD SHALL BE EXOTHERMIC TYPE.
- 6) CONTRACTOR SHALL COORDINATE ALL SERVICE CONNECTIONS WITH UTILITY. CONTRACTOR SHALL PROVIDE 10'-0" RISER AT POLE AND COIL UP SUFFICIENT CABLES AT TRANSFORMER FOR UTILITY CONNECTIONS.
- 7) 2" GRS CONDUIT SHALL BE JACKED WHEN CROSSING EXISTING PAVEMENT. COST ASSOCIATED WITH THIS WORK SHALL BE INCIDENTAL TO PAY ITEM "AR110212 2" STEEL DUCT, DIRECT BURY."
- 8) CONNECT NEW CIRCUIT #1 AND NL CIRCUIT TO THE EXISTING PARKING LOT LIGHTING CIRCUIT AND NL CIRCUIT. ANY SPLICES TO THE NEW CABLES SHALL BE MADE INSIDE THE POLE BASES.

LEGEND

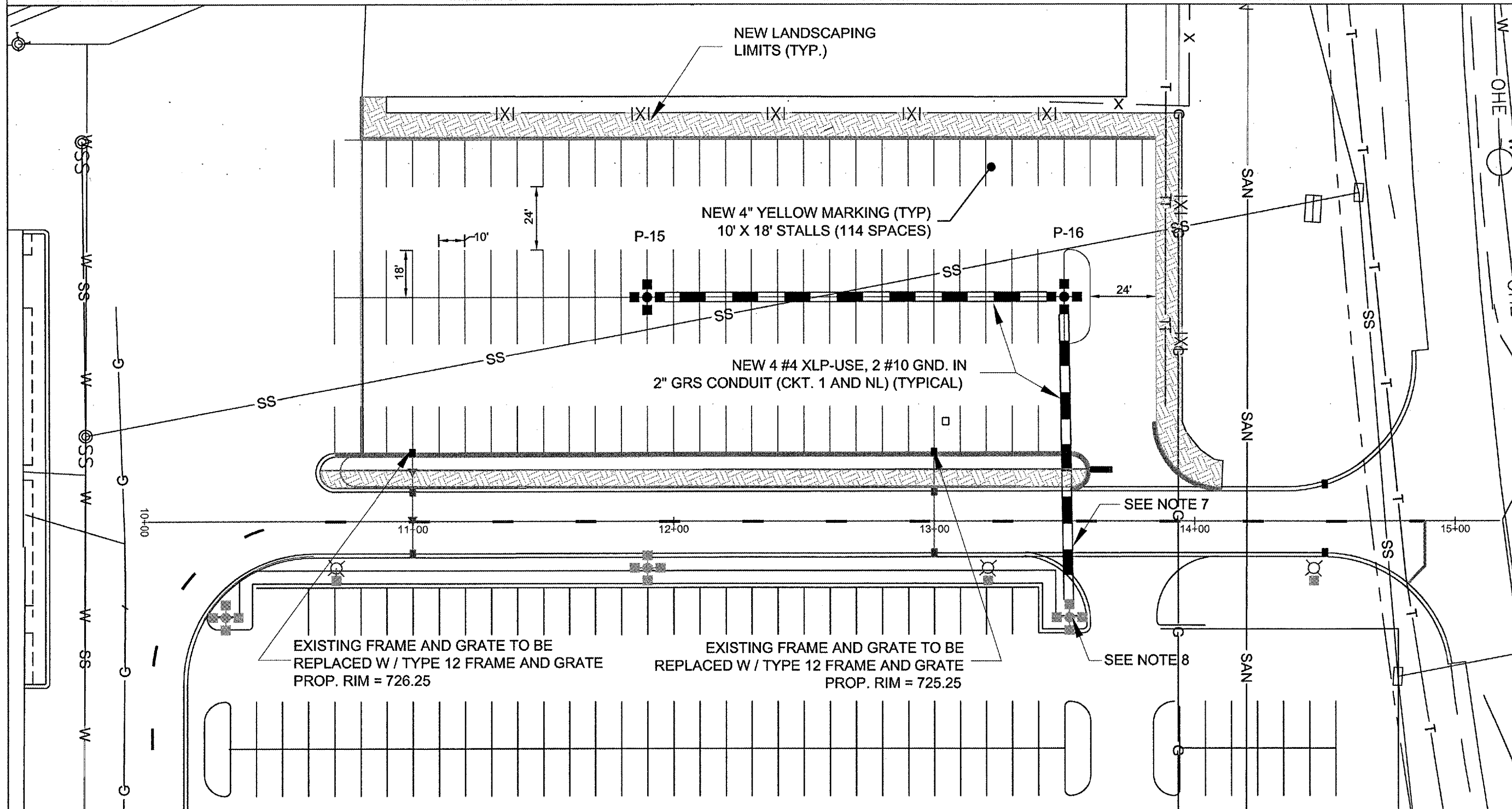
-  NEW 2" GRS CONDUIT
-  NEW TYPE A AREA LIGHT POLE W/4 FIXTURES
-  NEW FRAME AND GRATE
-  NEW LANDSCAPING LIMITS
-  EXISTING TYPE A AREA LIGHT POLE W/4 FIXTURES

R00010
TOTAL SHEETS = 24



REVISIONS		
NUMBER	BY	DATE

0 1
THIS BAR IS EQUAL TO 1" AT FULL SCALE (17 X 11).

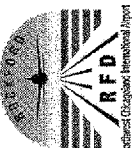



GREATER ROCKFORD AIRPORT AUTHORITY
ROCKFORD, ILLINOIS
ILLINOIS PROJECT: RFD-2820

NORTH AND WEST AUTO PARKING
**PROPOSED DRAINAGE / MARKING
LANDSCAPING / ELECTRICAL PLAN**

CMT
CRANFORD, MURPHY & TILLY, INC.
CONSULTING ENGINEERS

Northwest
Chicago
International
Airport



DESIGN BY: TAS
DRAWN BY: CMT
CHECKED BY: TAS
APPROVED BY: 
DATE: 5.13.2005
JOB No: 05258-04-00

23 (LME)