

WA055



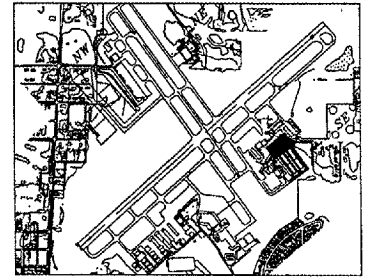
HANSON PROFESSIONAL SERVICES INC.
815 Commerce Drive, Suite 200
Oak Brook, Illinois 60523
Telephone: 630.990.3800
Fax: 630.990.3801



3580 North McAree Road
Waukegan, Illinois 60087
Phone: 847.244.0055
Fax: 847.244.3813

REPAIR SELECTED PAVEMENT AREAS, REHABILITATE HANGAR TAXILANES AND SERVICE ROAD, AND CONSTRUCT NEW HANGAR PAVEMENTS

A.I.P. PROJ.: 3-17-0105-B30
IL PROJ.: UGN-3449



KEY MAP

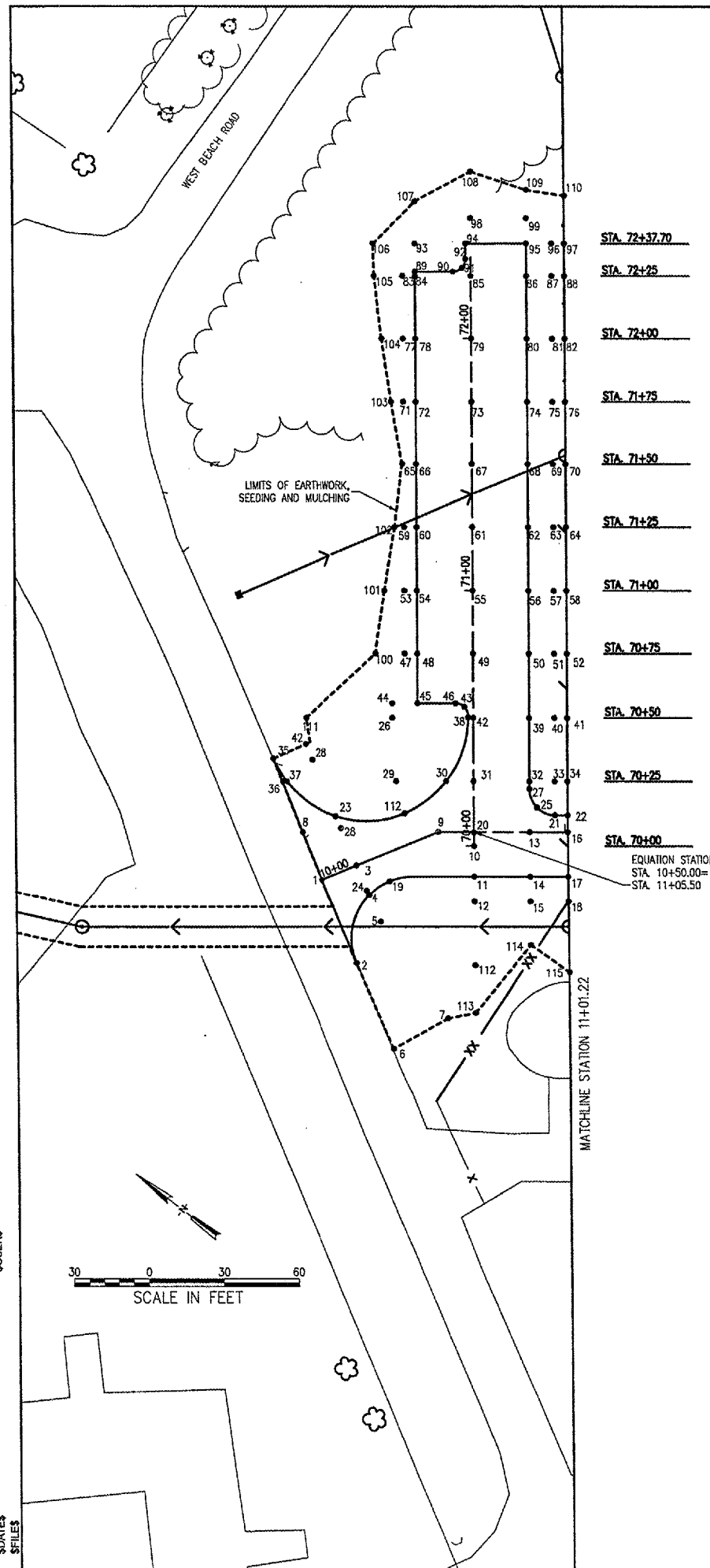
Table with 4 columns: No., Drawing Issue Description, Date, By

Date: MAY 06, 2005
Sheet Title

STAKING PLAN
PROPOSED PARKING LOT

Table with columns: Project Number, Layout By, Date, Design By, Date, Reviewed By, Date, Drawn By, Sheet No.

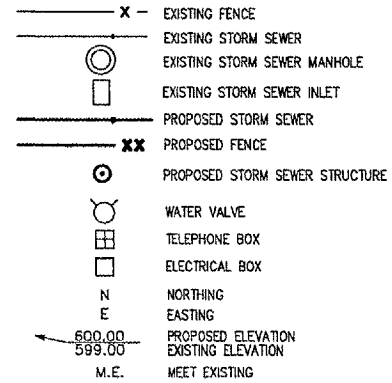
30



Main data table with columns: PT, NORTHING, EASTING, PROP EL, EXIST EL. Contains 100 rows of coordinate and elevation data.

Main data table with columns: PT, NORTHING, EASTING, PROP EL, EXIST EL. Contains 100 rows of coordinate and elevation data.

LEGEND



NOTES

- FOR ADDITIONAL STORM SEWER AND UNDERDRAIN INFORMATION, SEE SCHEDULES.
CONTRACTOR IS REQUIRED TO FIELD VERIFY EXISTING UTILITY LOCATIONS.
ALIGNMENT AND COORDINATES ARE BASED ON STATE PLANE COORDINATES. ENGINEER WILL PROVIDE CONTROL POINTS FOR PROJECT, SEE SPECIAL PROVISIONS.

SUSERS

SFILES

