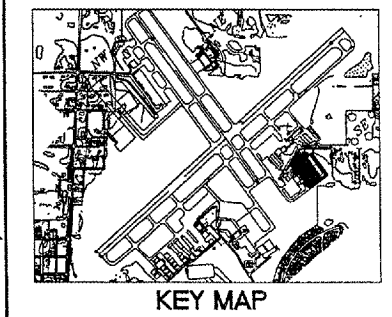


REPAIR SELECTED PAVEMENT AREAS, REHABILITATE HANGAR TAXILANES AND SERVICE ROAD, AND CONSTRUCT NEW HANGAR PAVEMENTS

A.I.P. PROJ.: 3-17-0105-B30
 IL. PROJ.: UGN-3449



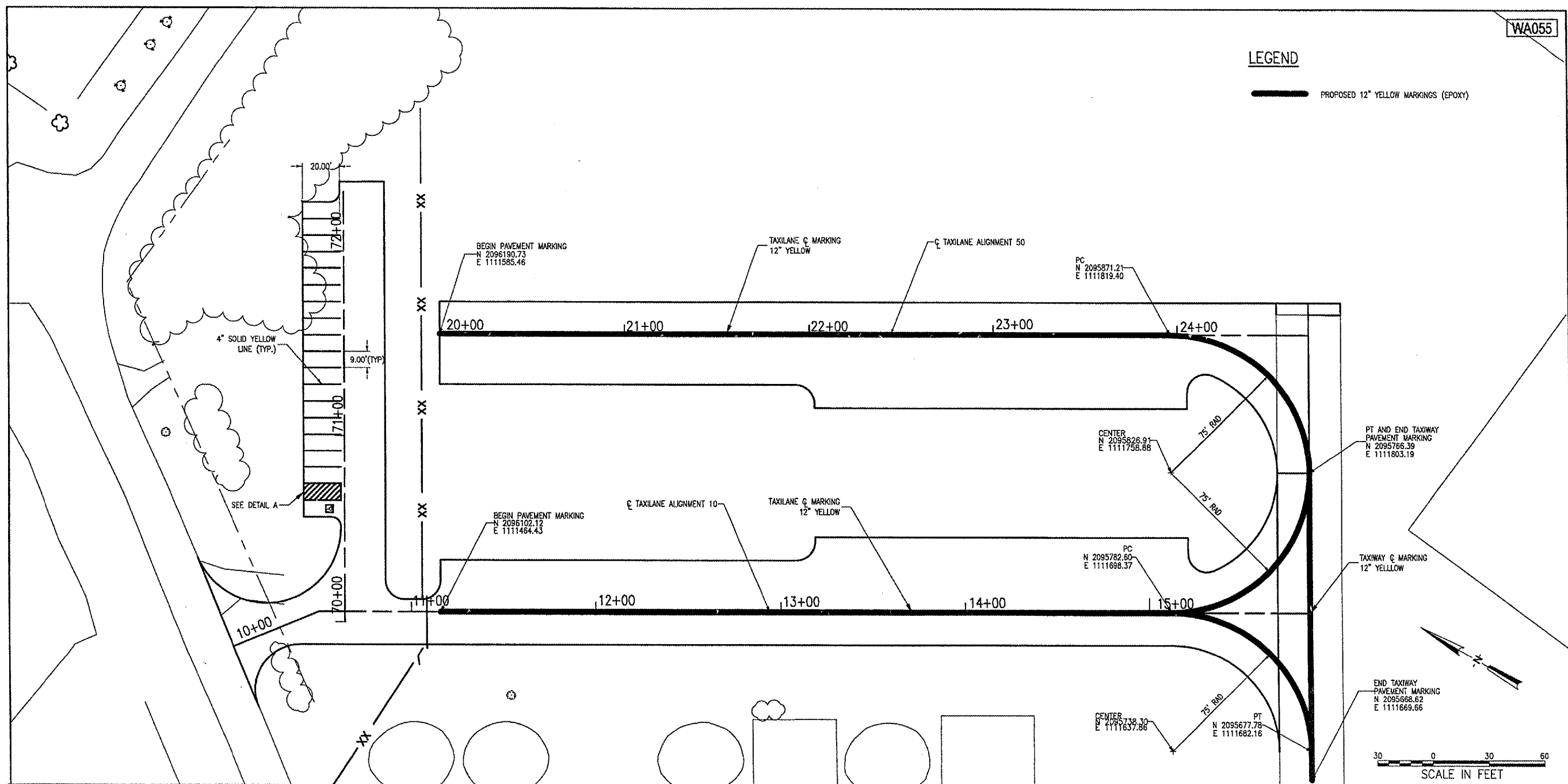
No.	Drawing Issue Description	Date	By

Date: MAY 06, 2005
 Sheet Title:

PAVEMENT MARKING PLAN AND SIGNING DETAILS

831-04TXKD
 Project Number

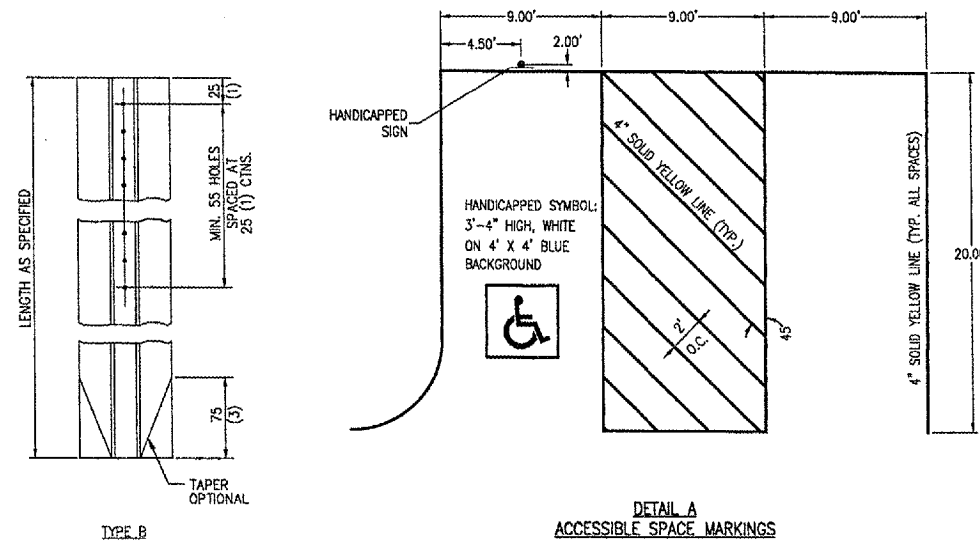
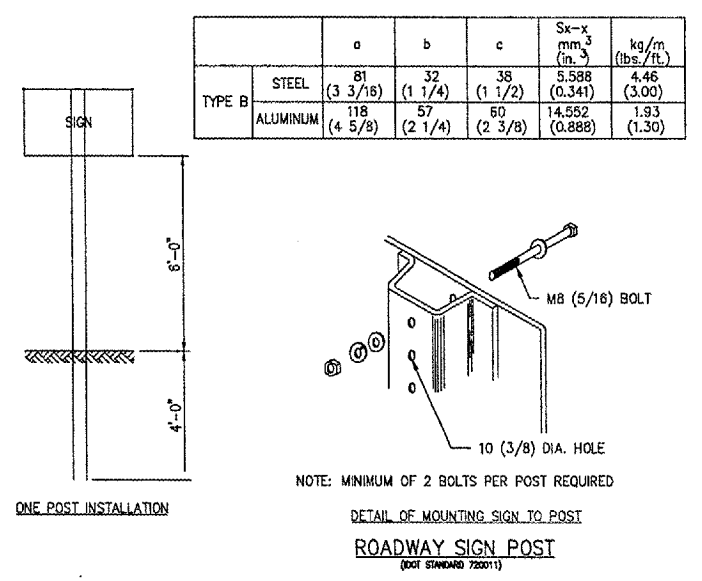
AAP	02/28/05
Layout By	Date
AAP	02/28/05
Designed By	Date
TMM	05/05/05
Reviewed By	Date
AAP	
Drawn By	Sheet No.



LEGEND

— PROPOSED 12" YELLOW MARKINGS (EPOXY)

- NOTES:**
- DIMENSIONS FOR CROSS SECTIONS ARE MINIMUM.
 - Sx-x IS THE MINIMUM SECTION MODULUS ABOUT THE X-X AXIS OF THE POST AS SHOWN. FOR POST IN WHICH HOLES ARE PUNCHED OR DRILLED FOR MORE THAN HALF THEIR LENGTH, Sx-x SHALL BE COMPUTED FOR THE NEXT SECTION.
 - SOIL PRESSURE: MINIMUM ALLOWABLE SOIL PRESSURE = 1.25 TSF (120 KLA).
 - ALL HOLES ARE 3/8" (10mm) IN DIAMETER.
 - LOADING FOR 60 MPH (95 km/h) WIND VELOCITY WITH 30% GUST FACTOR, NORMAL TO SIGN.
 - MATERIALS: POST SHALL BE STRUCTURAL STEEL—BREAKAWAY CONFORMING WITH THE REQUIREMENTS OF SECTION 1093.01 OF THE IDOT SPECIFICATIONS. BOLTS, NUTS AND WASHERS SHALL BE HIGH-STRENGTH STEEL, GALVANIZED AND SHALL CONFORM TO SECTION 1006.08 OF THE IDOT SPECIFICATIONS.
 - IN AREAS WHERE POSTS PENETRATE PAVEMENT, THE PAVEMENT SHALL BE CORED. AFTER THE POST IS SET, THE HOLE SHALL BE GROUTED WITH AN IDOT APPROVED NON-SHRINK GROUT. COST INCIDENTAL TO SIGN.



- NOTES**
- ALL WHITE AND YELLOW PAVEMENT MARKINGS TO INCLUDE REFLECTIVE GLASS SPHERES.
 - ALL MARKINGS ARE TO BE EPOXY PAINT.

STATES FILES