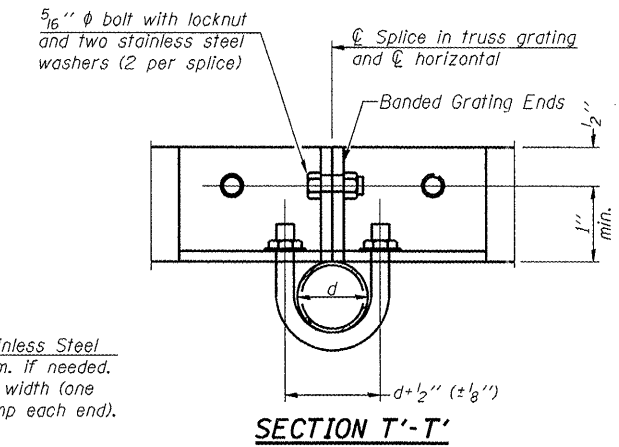


**SPECIFICATIONS FOR STANDARD ALUMINUM GRATING**

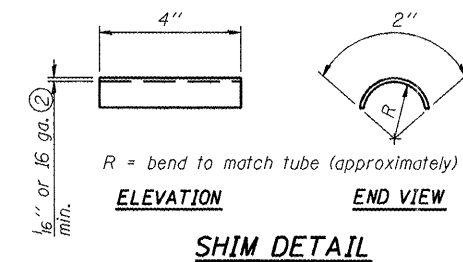
Main Bearing Bars (MBB) shall be  $\frac{3}{16}$ " x  $1\frac{1}{2}$ " on  $1\frac{3}{16}$ " centers and conform to ASTM B221 Alloy 6061-T6.  
 Cross bars (CB) shall be  $\frac{3}{16}$ " x  $1\frac{1}{2}$ " on 4" centers and conform to ASTM B221 Alloy 6063-T5 or 6061-T6.

**OR**

Aluminum Grating with modified "T" sections for main bearing bars shall meet the following requirements:  
 Main bars shall conform to ASTM B221 Alloy 6061-T6 and have a minimum section modulus equal to 0.0705 in.<sup>3</sup> per bar, a depth of  $1\frac{1}{2}$ ", spaced on  $1\frac{3}{16}$ " centers.  
 Cross bars shall conform to ASTM B221 Alloy 6063-T5 or T-42 and spaced on 4" centers.

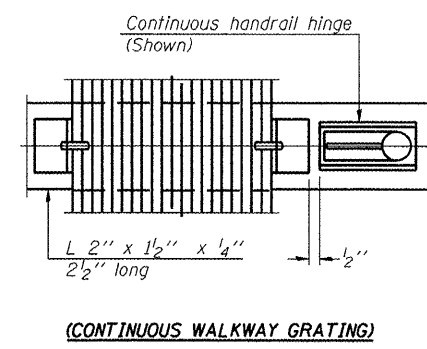
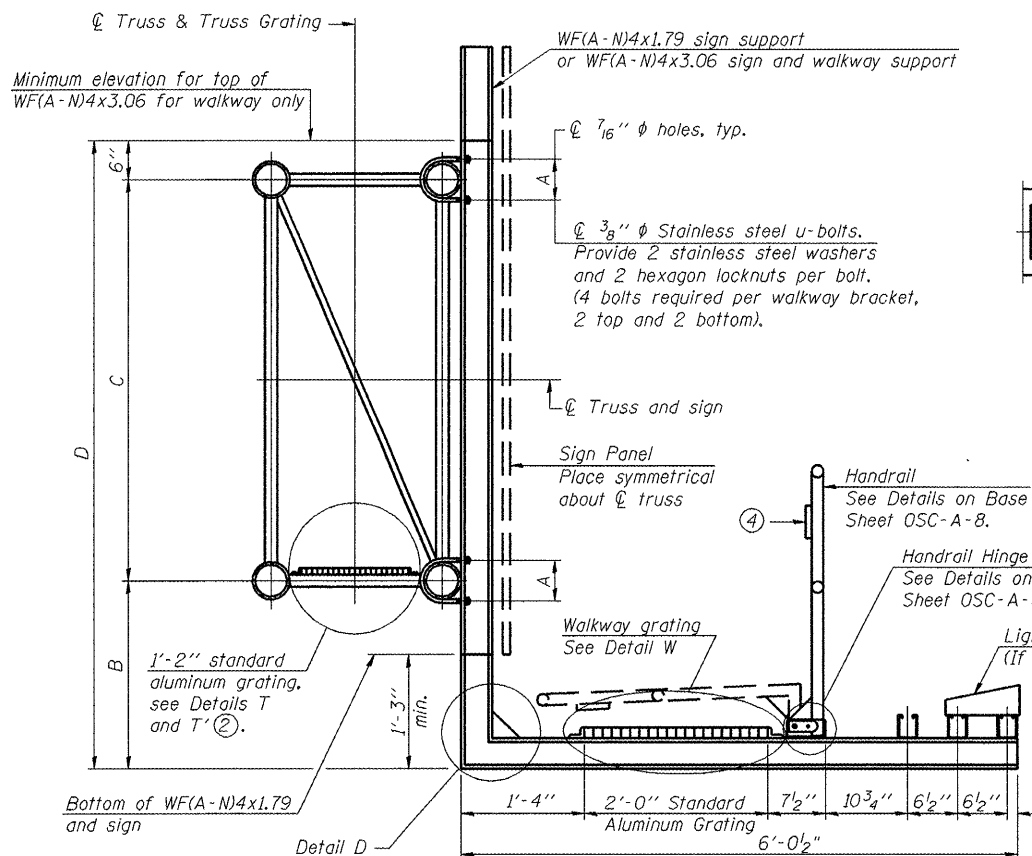


**SECTION T'-T'**



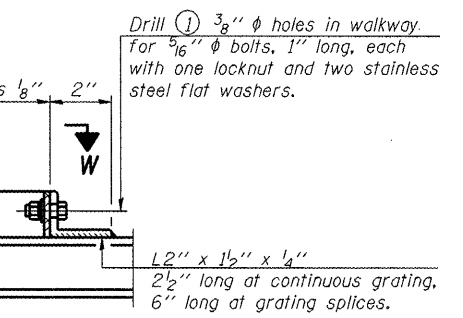
**SHIM DETAIL**

- ① Drilling holes in grating may be done in shop or field, based on Contractor's preference and subject to accurate alignment.
- ② Stainless steel shims shall be placed as shown in Detail T if needed to compensate for alignment variations between horizontal and diagonal pipes beyond adjustment provided by angles. Thicker shims may be used subject to shims performing properly.
- ③ If Handrail Joint present, weld angle to WF(A-N)4 and  $\frac{1}{4}$ " extension bars. (See Base Sheet OSC-A-8.)
- ④  $\frac{1}{8}$ " x  $\frac{1}{2}$ " x 2" welded to handrail posts to protect locations that contact grating.
- ⑤ Tube to grating gap may vary from 0 to  $\frac{1}{2}$ ", max. to align walkway, allow for camber, etc.
- ⑥ Based on actual sign height.  $D_s$ , given on OSC-A-1.



**(CONTINUOUS WALKWAY GRATING)**

**SECTION W-W**



**(AT WALKWAY GRATING SPLICE)**

**DETAIL W**

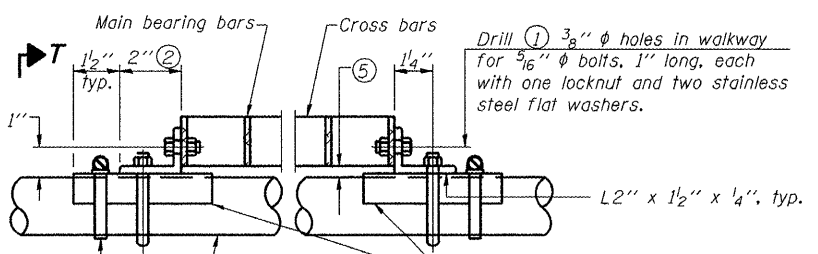
(Walkway grating)  
 2-L2" x 1 1/2" x 1/4" of each horizontal  
 Continuous Truss Grating  
 1", min. typ.  
 Drill ① 3/8"  $\phi$  holes in walkway for 5/16"  $\phi$  bolts, 1" long, each with one locknut and two stainless steel flat washers.  
 5/16"  $\phi$  bolt (two per angle)  
 1"  $\pm$  1/2", spaced to miss cross bars, typ.  
 1/2" grating  
 1/2" min.  
 1/2" (2)  
 1/2" min.  
 3 sides typ. ③

**DETAIL T'**

(Truss grating splice)  
 Details not shown same as Detail T.  
 Alternate materials may be used subject to the Engineer's review and approval.

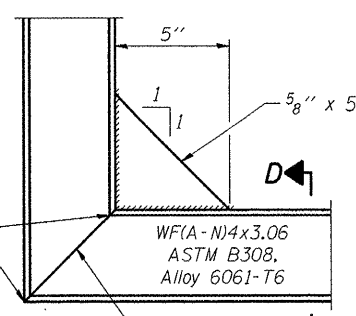
**SECTION B-B**

Sign shall be even with the top of the bracket, but it may extend no more than 6" above the top of the bracket for field adjustments.



**SECTION D-D**

Screw type stainless steel tube clamp at shim location



**DETAIL D**

**DETAIL T**

(Continuous Truss grating)

Structure Number	Station	A	⑥ B	C	⑥ D
3C006I080R050.9	839+25 EB	7"	1'-6"	5'-6"	7'-6"
3C006I080L051.7	886+45 WB	7"	1'-6"	5'-6"	7'-6"

OSC-A-7

7-1-10

FILE NAME =	USER NAME = patelyj	DESIGNED - YOGESH PATEL	REVISED -
77-Sign Truss-shit-details.DGN		DRAWN - YOGESH PATEL	REVISED -
PLOT SCALE = 100.00% 1/4" = 1'-0"		CHECKED -	REVISED -
PLOT DATE = Mar 14, 2011 - 01:58:30 PM		DATE -	REVISED -

**STATE OF ILLINOIS**  
**DEPARTMENT OF TRANSPORTATION**

**CANTILEVER SIGN STRUCTURES - WALKWAY DETAILS**  
**ALUMINUM TRUSS & STEEL POST**

SCALE: \_\_\_\_\_ SHEET NO. 1 OF 1 SHEETS STA. \_\_\_\_\_ TO STA. \_\_\_\_\_

F.A.I. RTE.	SECTION	COUNTY	TOTAL SHEETS	SHEET NO.
I-80	D-3 OVD SIGN STR REPL 12-04	BUREAU	17	13
ILLINOIS			CONTRACT NO. 46177	