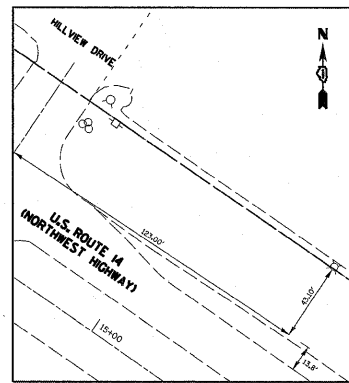


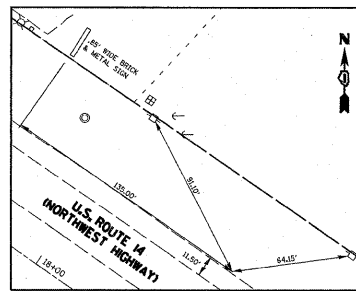
CONTROL POINT 1

IRON ROD W/PUNCH MARK
 N 2010308.510
 E 1021866.160
 ELEV. 815.88
 STA. 12+86.7/55.96 LT



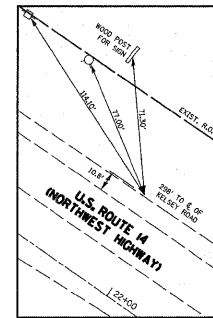
CONTROL POINT 2

IRON ROD W/PUNCH MARK
 N 2010139.595
 E 1022114.270
 ELEV. 817.76
 STA. 15+86.85/58.08 LT



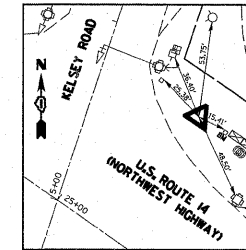
CONTROL POINT 3

IRON ROD W/PUNCH MARK
 N 2009966.810
 E 1022360.470
 ELEV. 816.40
 STA. 18+87.62/55.94' LT



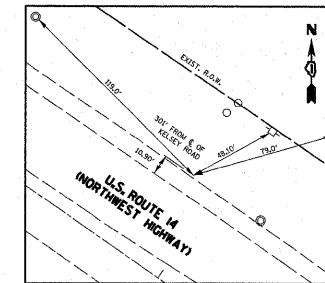
CONTROL POINT 4

IRON ROD W/PUNCH MARK
 N 2009796.565
 E 1022605.465
 ELEV. 811.39
 STA. 21+86/55.08' LT



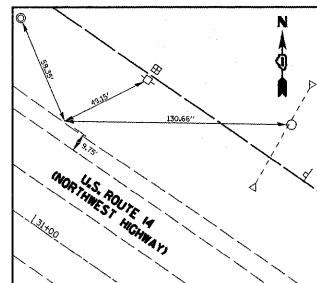
CONTROL POINT 5

IRON ROD W/PUNCH MARK
 BENCH MARK ELEV.= 800.10 (NAVD 88)
 N 2009616.975
 E 1022907.020
 ELEV. 800.56



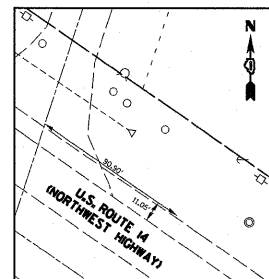
CONTROL POINT 6

IRON ROD W/PUNCH MARK
 N 2009456.140
 E 1023097.895
 ELEV. 798.26
 STA. 27+84.61/55.15' LT



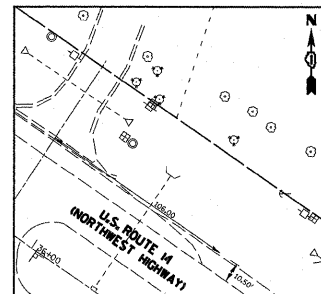
CONTROL POINT 7

IRON ROD W/PUNCH MARK
 N 2009284.800
 E 1023343.745
 ELEV. 797.49
 STA. 30+84.27/53.99' LT



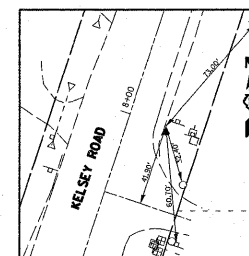
CONTROL POINT 8

IRON ROD W/PUNCH MARK
 N 2009115.480
 E 1023590.905
 ELEV. 796.24
 STA. 33+83.87/55.24' LT



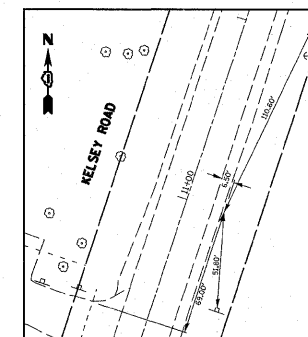
CONTROL POINT 9

IRON ROD W/PUNCH MARK
 N 2008944.705
 E 1023837.010
 ELEV. 795.98
 STA. 36+83.42/54.69' LT



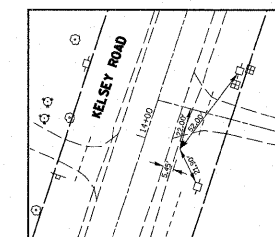
CONTROL POINT 10

IRON ROD W/PUNCH MARK
 N 2009850.965
 E 1022945.335
 ELEV. 802.99
 STA. 7+99.72/20.14' RT



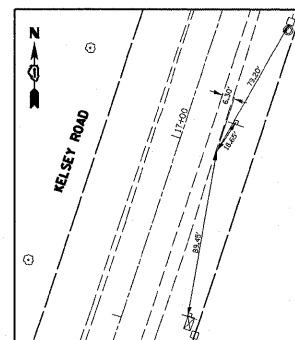
CONTROL POINT 11

IRON ROD W/PUNCH MARK
 N 2010135.715
 E 1023039.865
 ELEV. 804.24
 STA. 10+99.75/20.81' RT



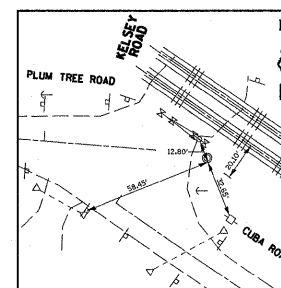
CONTROL POINT 12

IRON ROD W/PUNCH MARK
 N 2010421.430
 E 1023132.370
 ELEV. 801.74
 STA. 14+00.06/19.26' RT



CONTROL POINT 13

IRON ROD W/PUNCH MARK
 N 2010705.140
 E 1023227.175
 ELEV. 791.52
 STA. 16+99.19/20.51' RT



CONTROL POINT 2360

CROSS NOTCH SET IN CONCRETE
 FOR TRAFFIC CONTROL VAULT
 N 2009378.015
 E 1022776.750
 ELEV. 802.30

FILE NAME =	USER NAME = guillaumefp	DESIGNED -	REVISED -	STATE OF ILLINOIS DEPARTMENT OF TRANSPORTATION	U.S. ROUTE 14 @ KELSEY ROAD ALIGNMENT TIES AND BENCHMARK SHEET			F.A.P. RTE.	SECTION	COUNTY	TOTAL SHEETS	SHEET NO.
et\pw_work\pwr\dot\guillaumefp\d0156207\p	41509-sh-t-ATB.dgn	DRAWN -	REVISED -		305	24R-N-2	LAKE	43	9			
	PLOT SCALE = 100.0000' / IN.	CHECKED -	REVISED -		CONTRACT NO. 60K17							
	PLOT DATE = 2/5/2011	DATE -	REVISED -		SCALE: NONE	SHEET NO. 1 OF 2 SHEETS	STA.	TO STA.	ILLINOIS FED. AID PROJECT			