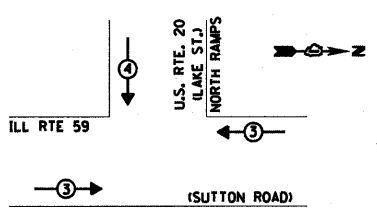


PHASE DESIGNATION DIAGRAM

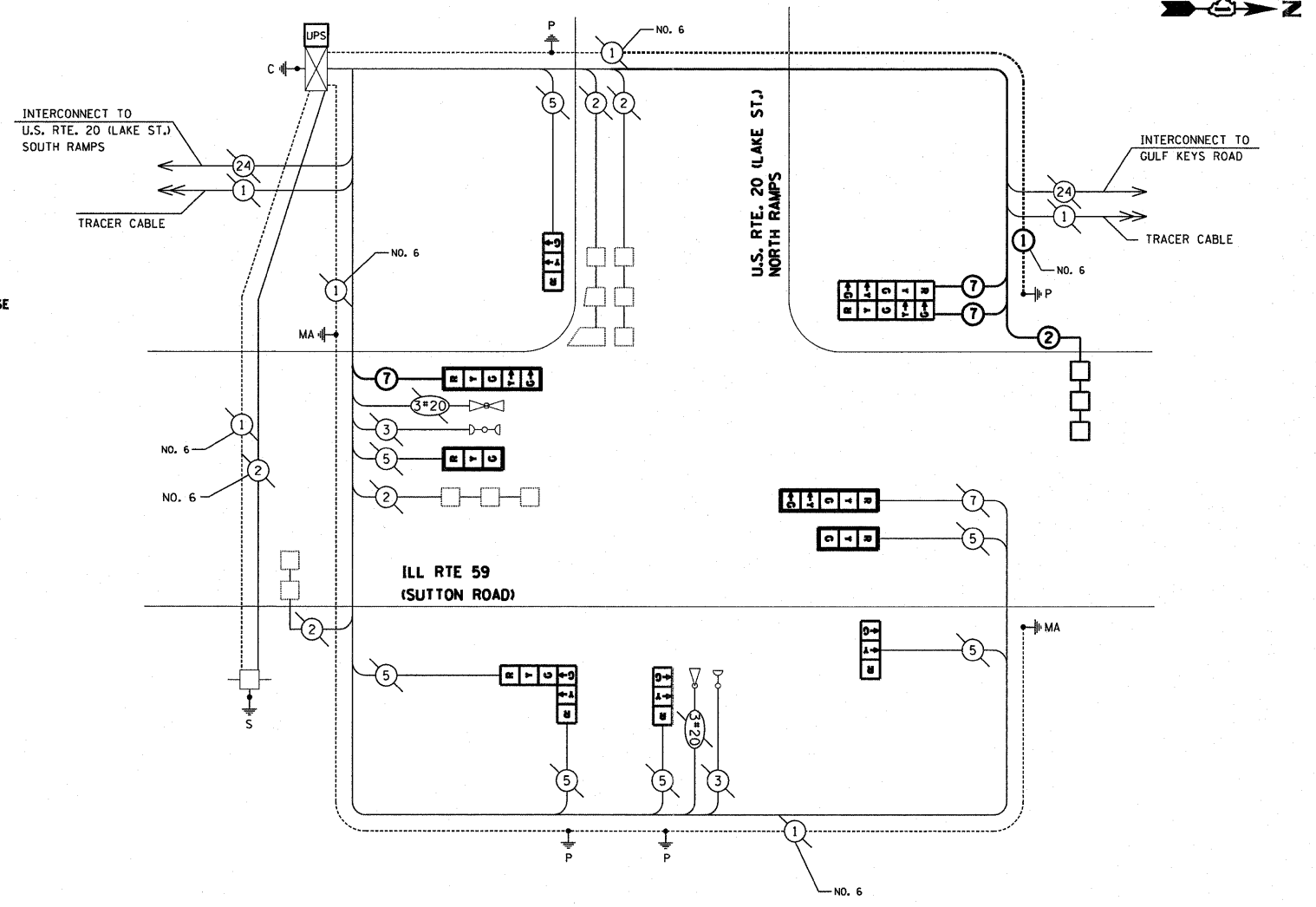
OVERLAP LETTER	PERMISSIVE PHASE	PROTECTED PHASE
B	= 4	+ 5
C	= 6	+ 4

EMERGENCY VEHICLE PREEMPTION SEQUENCE



PROPOSED EMERGENCY VEHICLE PREEMPTOR

EMERGENCY VEHICLE PREEMPTOR	3	4
MOVEMENT	← →	← →



CABLE PLAN

RESTORATION OF WORK AREA, RESTORATION OF THE TRAFFIC SIGNAL WORK AREA SHALL BE INCIDENTAL TO THE RELATED PAY ITEM SUCH AS FOUNDATION, CONDUIT, HANDHOLE, TRENCH AND BACKFILL, ETC., AND NO EXTRA COMPENSATION SHALL BE ALLOWED. ALL ROADWAY SURFACES SUCH AS SHOULDERS, MEDIAN, SIDEWALKS, PAVEMENT, ETC. SHALL BE REPLACED IN KIND. ALL DAMAGE TO MOWED LAWNS SHALL BE REPLACED WITH AN APPROVED SOG, AND ALL DAMAGE TO UNMOWED FIELDS SHALL BE SEED IN ACCORDANCE WITH STANDARD SPECIFICATIONS 252 AND 250 RESPECTIVELY.

NOTE:
THE TRAFFIC SIGNAL CONTROLLER EQUIPMENT FOR THIS PROJECT SHALL BE "EAGLE" TO MATCH THE EXISTING ADJACENT SYSTEM.

THE ENDS OF THE TRACER CABLES SHALL BE CONTINUOUS AND EXTEND INTO THE CONTROLLER CABINETS.

SCHEDULE OF QUANTITIES

QUANTITY	UNIT	ITEM
197	FOOT	CONDUIT IN TRENCH, 2" DIA., GALVANIZED STEEL
38	FOOT	CONDUIT IN TRENCH, 2 1/2" DIA., GALVANIZED STEEL
153	FOOT	CONDUIT PUSHED, 4" DIA., GALVANIZED STEEL
2	EACH	HANDHOLE
246	FOOT	TRENCH AND BACKFILL FOR ELECTRICAL WORK
1	EACH	MAINTENANCE OF EXISTING TRAFFIC SIGNAL INSTALLATION
585	FOOT	ELECTRIC CABLE IN CONDUIT, SIGNAL NO. 14 7C
405	FOOT	ELECTRIC CABLE IN CONDUIT, LEAD-IN, NO. 14 1-PAIR
1	EACH	TRAFFIC SIGNAL POST, GALVANIZED STEEL 16 FT.
4	FOOT	CONCRETE FOUNDATION, TYPE A
1	EACH	DRILL EXISTING HANDHOLE
2	EACH	SIGNAL HEAD, L.E.D., 1-FACE, 3-SECTION, MAST ARM MOUNTED
3	EACH	SIGNAL HEAD, L.E.D., 1-FACE, 3-SECTION, BRACKET MOUNTED
2	EACH	SIGNAL HEAD, L.E.D., 1-FACE, 5-SECTION, MAST ARM MOUNTED
1	EACH	SIGNAL HEAD, L.E.D., 2-FACE, 3-SECTION, BRACKET MOUNTED
1	EACH	SIGNAL HEAD, L.E.D., 2-FACE, 5-SECTION, BRACKET MOUNTED
4	EACH	TRAFFIC SIGNAL BACKPLATE, LOUVERED, ALUMINUM
160	FOOT	DETECTOR LOOP, TYPE I
70	FOOT	REMOVE ELECTRIC CABLE FROM CONDUIT
1	EACH	REMOVE EXISTING TRAFFIC SIGNAL EQUIPMENT
3	EACH	REMOVE EXISTING HANDHOLE
1	EACH	REMOVE EXISTING CONCRETE FOUNDATION
1	EACH	TEMPORARY TRAFFIC SIGNAL TIMING
1	EACH	UNINTERRUPTIBLE POWER SUPPLY
235	FOOT	ELECTRIC CABLE IN CONDUIT, GROUNDING, NO. 6 1C
1	EACH	RE-OPTIMIZE TRAFFIC SIGNAL SYSTEM LEVEL 1

I.D.O.T. TRAFFIC SIGNAL INSTALLATION ELECTRICAL SERVICE REQUIREMENTS					TOTAL WATTAGE
TYPE	NO. LAMPS	WATTAGE INCAND.	LED	% OPERATION	
SIGNAL (RED)	11	17		0.50	93.50
(YELLOW)	11	25		0.25	68.75
(GREEN)	11	15		0.25	41.25
ARROW	8	12		0.10	9.60
PED. SIGNAL	-	25		1.00	-
CONTROLLER	1	100		1.00	100.00
ILLUM. SIGN	-	25		0.05	-
FLASHER				0.05	
ENERGY COSTS TO:					TOTAL = 313.10

ILLINOIS DEPARTMENT OF TRANSPORTATION
DIVISION OF HIGHWAY/DISTRICT 1
201 WEST CENTER COURT/SCHAUMBURG, ILLINOIS 60196-1096

ENERGY SUPPLY CONTACT: _____
PHONE: _____
COMPANY: COMMONWEALTH EDISON

FILE NAME =	USER NAME = wingram	DESIGNED - WHI	REVISED -
#FILE#		DRAWN - WHI	REVISED -
		CHECKED - DEB	REVISED -
		DATE - 1/10/2011	REVISED -

STATE OF ILLINOIS	DEPARTMENT OF TRANSPORTATION
-------------------	------------------------------

IL. RTE. 59 AT U.S. RTE. 20 NORTH RAMPS			
SCHEDULE OF QUANTITIES, CABLE PLAN, PHASE DESIGNATION DIAGRAM AND EMERGENCY PREEMPTION SEQUENCE			
SCALE: N.T.S.	SHEET NO.	OF SHEETS	STA. TO STA.

F.A.P. RTE. 338	SECTION 7 HB-K-N	COUNTY COOK	TOTAL SHEETS 82	SHEET NO. 43
CONTRACT NO. 60K62				

FED. ROAD DIST. NO.	ILLINOIS	FED. AID PROJECT
---------------------	----------	------------------

APEX CONSULTING ENGINEERS, LLC
111 E. Wacker Drive, Suite 520
Chicago, IL 60601