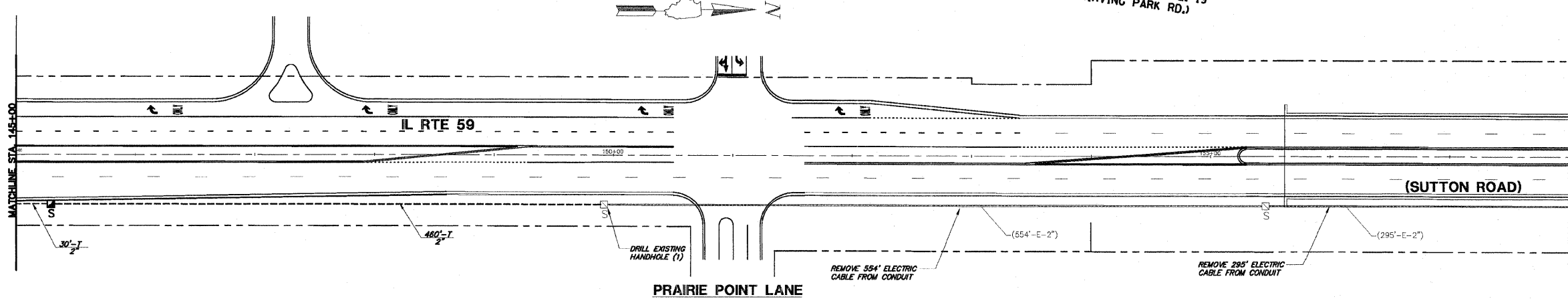


INTERCONNECT PLAN LEGEND

	PROPOSED	EXISTING
CONTROLLER		
HANDHOLE		
DOUBLE HANDHOLE		
HEAVY-DUTY HANDHOLE		
G.S. CONDUIT IN TRENCH (T) OR PUSHED (P)		
DETECTOR LOOP		
UNIT DUCT	U.D.	
SYSTEM	S	
INTERSECTION	IP	I

FOR INFORMATION ONLY

THE TRAFFIC SIGNAL CONTROL EQUIPMENT FOR THIS PROJECT SHALL BE "EAGLE" TO MATCH THE EXISTING ADJACENT SYSTEM.



APEX
CONSULTING ENGINEERS, LLC
111 E. Wacker Drive, Suite 620
Chicago, IL 60601

FILE NAME =	USER NAME = wing-am	DESIGNED - WHI	REVISED -	STATE OF ILLINOIS DEPARTMENT OF TRANSPORTATION	INTERCONNECT PLAN IL. RTE. 59 - FROM BARTLETT RD. TO GOLF RD.			F.A.P. RTE. 338	SECTION 7 HB-K-N	COUNTY COOK	TOTAL SHEETS 82	SHEET NO. 47
#FILE#	PLOT SCALE = #SCALE#	DRAWN - WHI	REVISED -		SCALE: NTS	SHEET NO. OF SHEETS	STA. TO STA.	CONTRACT NO. 60K62				
	PLOT DATE = 2/22/2011	CHECKED - DEB	REVISED -		ILLINOIS FED. AID PROJECT							
		DATE - 1/10/2011	REVISED -									