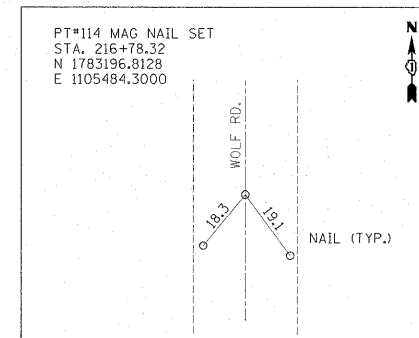
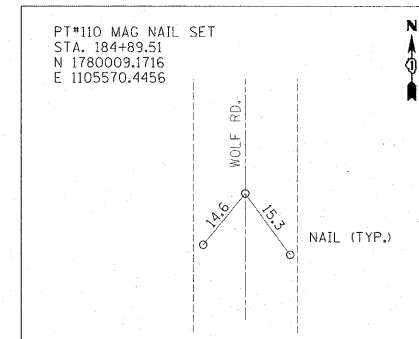
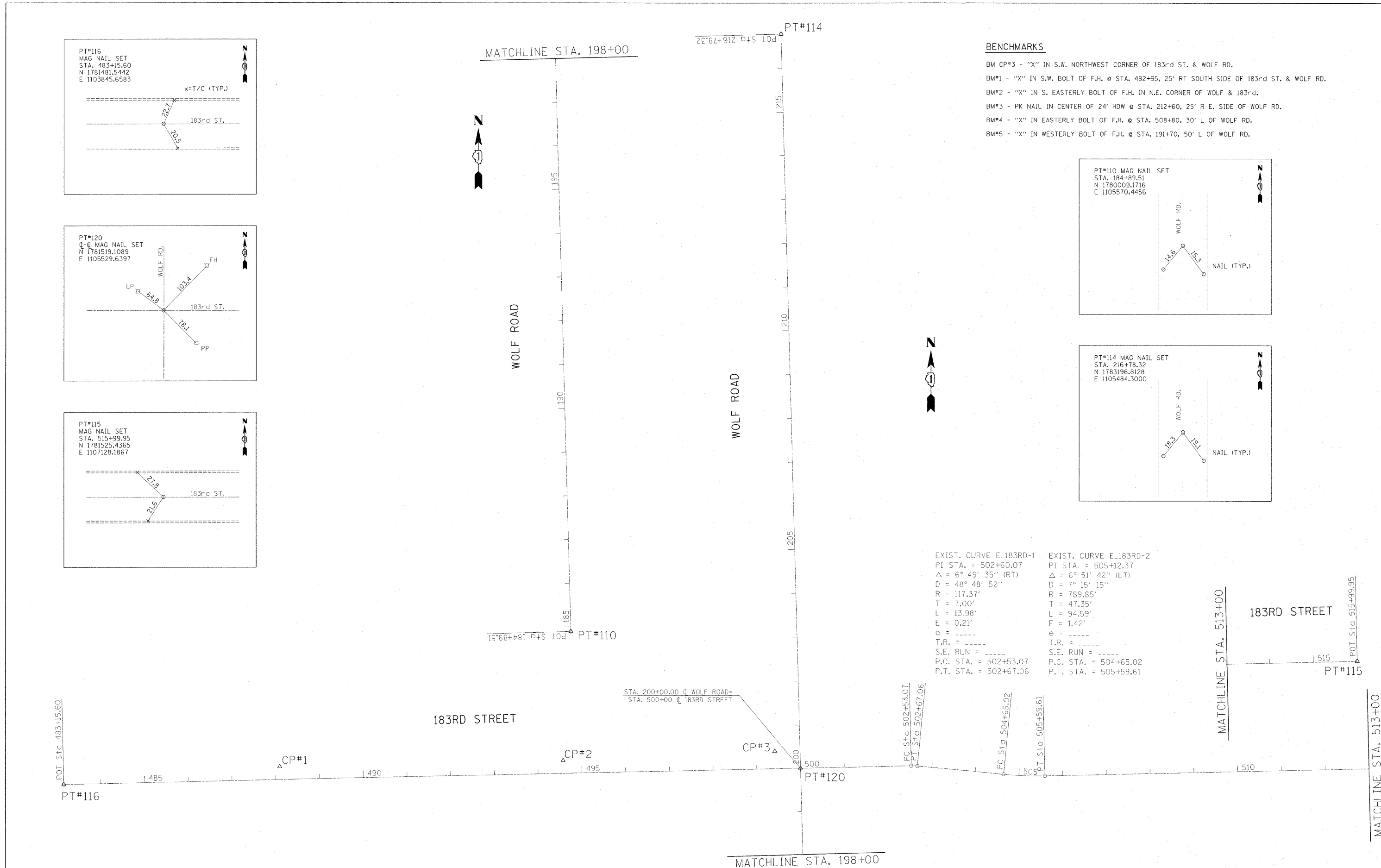


BENCHMARKS

- BM CP#3 - "X" IN S.W. NORTHWEST CORNER OF 183rd ST. & WOLF RD.
- BM#1 - "X" IN S.W. BOLT OF F.H. @ STA. 492+95, 25' RT SOUTH SIDE OF 183rd ST. & WOLF RD.
- BM#2 - "X" IN S. EASTERLY BOLT OF F.H. IN N.E. CORNER OF WOLF & 183rd.
- BM#3 - PK NAIL IN CENTER OF 24' HDW @ STA. 212+60, 25' R E. SIDE OF WOLF RD.
- BM#4 - "X" IN EASTERLY BOLT OF F.H. @ STA. 508+80, 30' L OF WOLF RD.
- BM#5 - "X" IN WESTERLY BOLT OF F.H. @ STA. 191+70, 50' L OF WOLF RD.



EXIST. CURVE E_183RD-1 EXIST. CURVE E_183RD-2
 PI STA. = 502+60.07 PI STA. = 505+12.37
 Δ = 6° 49' 35" (RT) Δ = 6° 51' 42" (LT)
 D = 48° 48' 52" D = 7° 15' 15"
 R = 117.37' R = 789.85'
 T = 7.00' T = 47.35'
 L = 13.98' L = 94.59'
 E = 0.21' E = 1.42'
 e = e =
 T.R. = T.R. =
 S.E. RUN = S.E. RUN =
 P.C. STA. = 502+53.07 P.C. STA. = 504+65.02
 P.T. STA. = 502+67.06 P.T. STA. = 505+59.61



FILE NAME =	USER NAME = galbanjr	DESIGNED -	REVISED -	STATE OF ILLINOIS DEPARTMENT OF TRANSPORTATION	ALIGNMENT, TIES & BENCHMARKS WOLF RD. AT 183rd STREET			F.A.U. RTE.	SECTION	COUNTY	TOTAL SHEETS	SHEET NO.
c:\pwworkspace\galbanjr\d0150439\F143409-sh1-ATB.dgn	PLOT SCALE = 1/8"=1'-0"	DRAWN -	REVISED -					2688	44-R-N	COOK/WILL	68	9
	PLOT DATE = 3/8/2011	CHECKED -	REVISED -		SCALE: 1"=100'			SHEET NO. OF SHEETS STA. TO STA.		CONTRACT NO. 60K66		
		DATE -	REVISED -		ILLINOIS FED. AID PROJECT							