

**PROJECT BEGINS
STA. 191 + 08.41**

WOLF ROAD

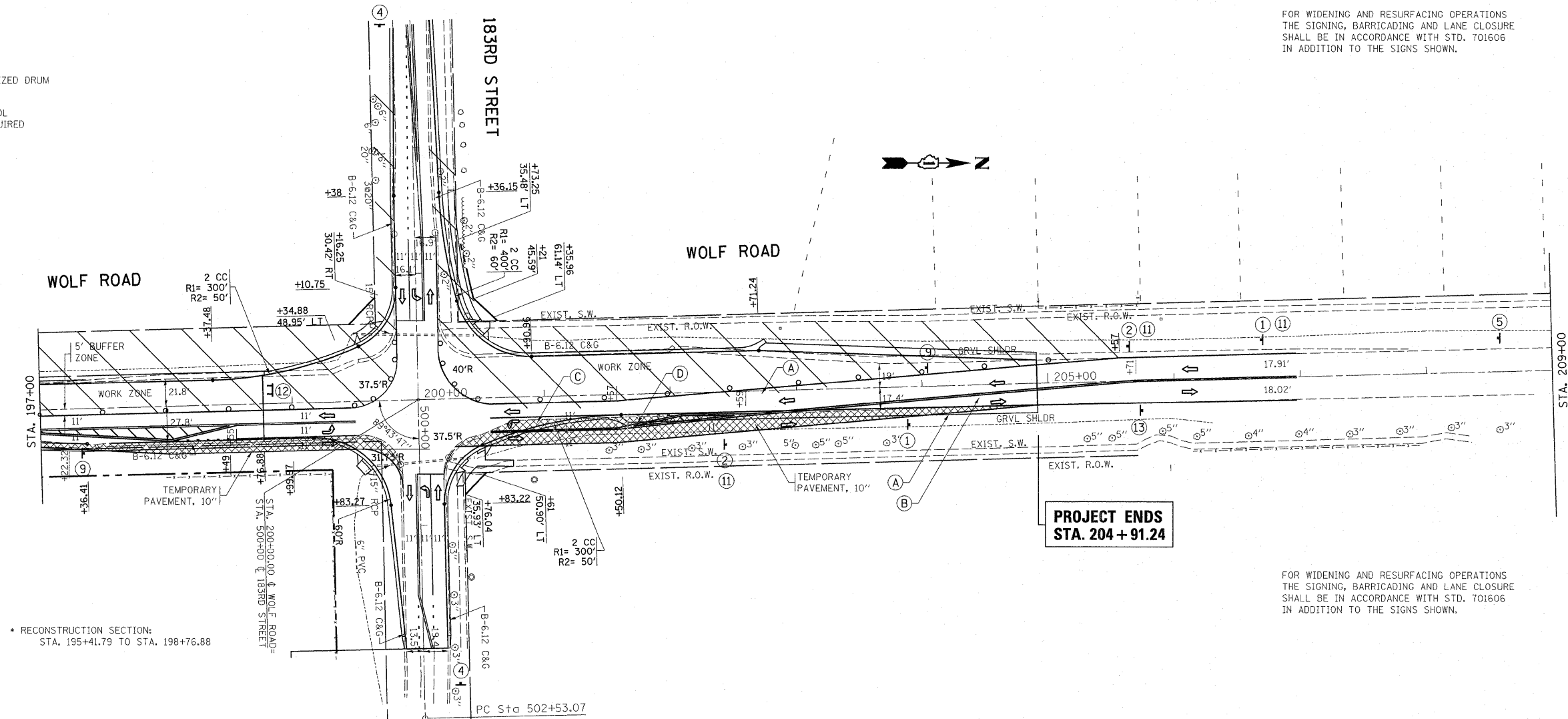
LEGEND:

- (A) TEMPORARY PAVEMENT MARKING, TYPE III
4" SOLID WHITE EDGE LINE
- (B) TEMPORARY PAVEMENT MARKING, TYPE III
4" SOLID DOUBLE YELLOW
- (C) TEMPORARY PAVEMENT MARKING, TYPE III
6" SOLID WHITE (TURN LANE)
- (D) TEMPORARY PAVEMENT MARKING, TYPE III
6" WHITE DOTTED (TURN LANE)
- (E) TEMPORARY PAVEMENT MARKING, TYPE III
24" SOLID WHITE (STOP BAR)

- BARRICADE TYPE I OR TYPE II OR REFLECTORIZED DRUM
OR VERTICAL PANEL WITH ONE BURN LIGHT
- ⊥ TYPE II BARRICADE WITH 2 LIGHTS ONE SYMBOL
REPRESENTS ANY NUMBER OF BARRICADES REQUIRED
TO ADEQUATELY PROTECT THE AREA SHOWN
- ⊕ CONSTRUCTION SIGN AND REFERENCE NUMBER
(REFER TO SIGN DETAIL LEGEND SHEET)
- ↑ TRAFFIC LANE

• RECONSTRUCTION SECTION:
STA. 195+41.79 TO STA. 198+76.88

FOR WIDENING AND RESURFACING OPERATIONS
THE SIGNING, BARRICADING AND LANE CLOSURE
SHALL BE IN ACCORDANCE WITH STD. 701606
IN ADDITION TO THE SIGNS SHOWN.



**PROJECT ENDS
STA. 204 + 91.24**

• RECONSTRUCTION SECTION:
STA. 195+41.79 TO STA. 198+76.88

FOR WIDENING AND RESURFACING OPERATIONS
THE SIGNING, BARRICADING AND LANE CLOSURE
SHALL BE IN ACCORDANCE WITH STD. 701606
IN ADDITION TO THE SIGNS SHOWN.

FILE NAME = c:\pw_work\p\dot\galbenj\d0150417\143809-Design.dgn	USER NAME = galbenj	DESIGNED -	REVISED -	STATE OF ILLINOIS DEPARTMENT OF TRANSPORTATION	WOLF ROAD AT 183RD STREET SUGGESTED STAGING & TRAFFIC CONTROL PLAN, STAGE II			F.A.I. RTE.	SECTION	COUNTY	TOTAL SHEETS	SHEET NO.
	PLOT SCALE = 50.0000' / IN.	CHECKED -	REVISED -					2688	44 R-N	COOK/WILL	68	18
PLOT DATE = 5/3/2011	DATE -	REVISED -	REVISED -		SCALE: SHEET NO. OF SHEETS STA. TO STA.			CONTRACT NO. 60K66				
ILLINOIS FED. AID PROJECT												