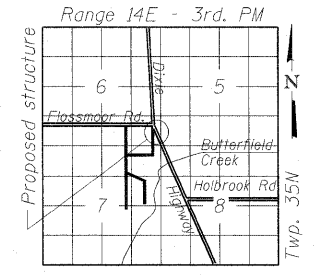


Bench Mark: "X" on concrete island at southwest quadrant of Dixie Highway and Flossmoor Road, El 647.768.

Existing Structure: Structure 016-W992 was built in 1930 under section 3249-15D. The existing structure consists of a reinforced concrete T-type retaining wall and will remain in place. A new soldier pile wall with CIP facing will be built directly in front of the existing retaining wall.

Traffic to be staged during construction. Golf course private access road to remain open at all times.

Existing guardrail and terminal to be removed and delivered to IDOT yard by Contractor. The Contractor shall coordinate this work with the Resident Engineer, and all cost shall be included in Removal pay items involved.

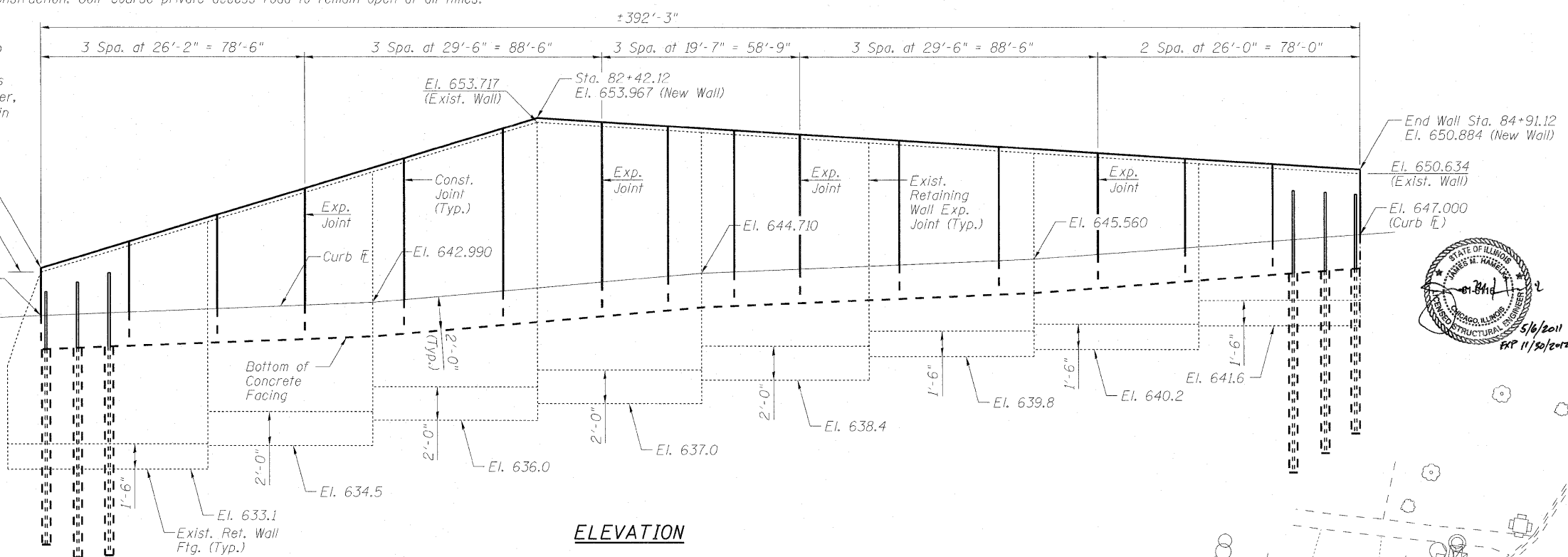
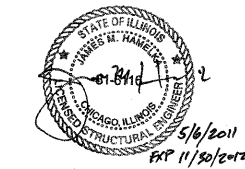


LOCATION SKETCH

DESIGN SPECIFICATIONS
2002 AASHTO Standard Specifications for Highway Bridges (17th Edition)

DESIGN STRESSES

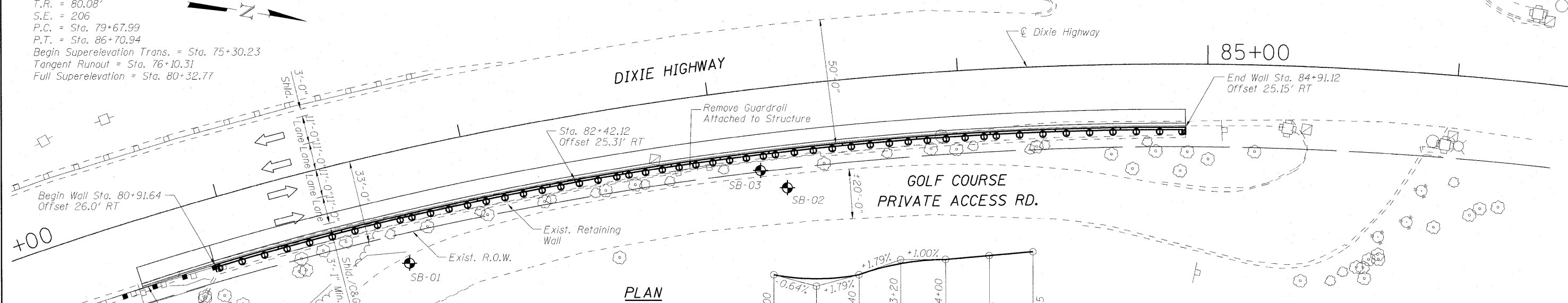
FIELD UNITS
f'c = 3,500 psi
fy = 60,000 psi (reinforcement)
fy = 50,000 psi (AASHTO M270 Gr. 50)



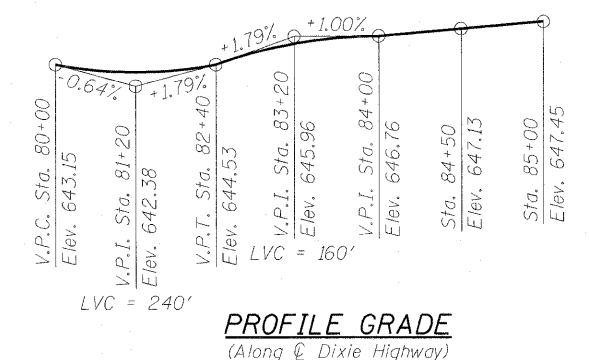
ELEVATION

CURVE DATA

Dixie Highway
P.I. = Sta. 83+27.12
Δ = 28° 46' 29" (RT)
D = 4° 05' 36"
R = 1,400.00'
T = 359.13'
L = 702.95'
E = 45.33'
e = 3.29 %
T.R. = 80.08'
S.E. = 206
P.C. = Sta. 79+67.99
P.T. = Sta. 86+70.94
Begin Superelevation Trans. = Sta. 75+30.23
Tangent Runout = Sta. 76+10.31
Full Superelevation = Sta. 80+32.77



PLAN



PROFILE GRADE
(Along C Dixie Highway)

HIGHWAY CLASSIFICATION

F.A.U. Rte. 2843 - Dixie Highway
Functional Class: Minor Arterial (Urban)
ADT: 11,000 (2006)
ADTT: 4%
DHV: 1,100 (2006)
Design Speed: 45 m.p.h.
Posted Speed: 40 m.p.h.
2-Way Traffic
Directional Distribution: 50:50

GENERAL PLAN AND ELEVATION

DIXIE HIGHWAY
F.A.U. RT. 2843 - SEC. 3249-I-2
COOK COUNTY
STATION 80+91.64 TO 84+91.12
STRUCTURE NO. 016-W992

FILE NAME =	USER NAME =	DESIGNED - JMS	REVISOR -	STATE OF ILLINOIS DEPARTMENT OF TRANSPORTATION	GENERAL PLAN AND ELEVATION STRUCTURE NO. 016-W992	SHEET NO. 51 OF 59 SHEETS	F.A.U. R.T.E.	SECTION	COUNTY	TOTAL SHEETS	SHEET NO.
PLOT SCALE =	CHECKED - JMS	REVISOR -	2843				3249-I-2	COOK	25	11	
PLOT DATE =	DRAWN - DR	REVISOR -	CONTRACT NO. 60L18								
	CHECKED - JMH	REVISOR -	ILLINOIS FED. AID PROJECT								