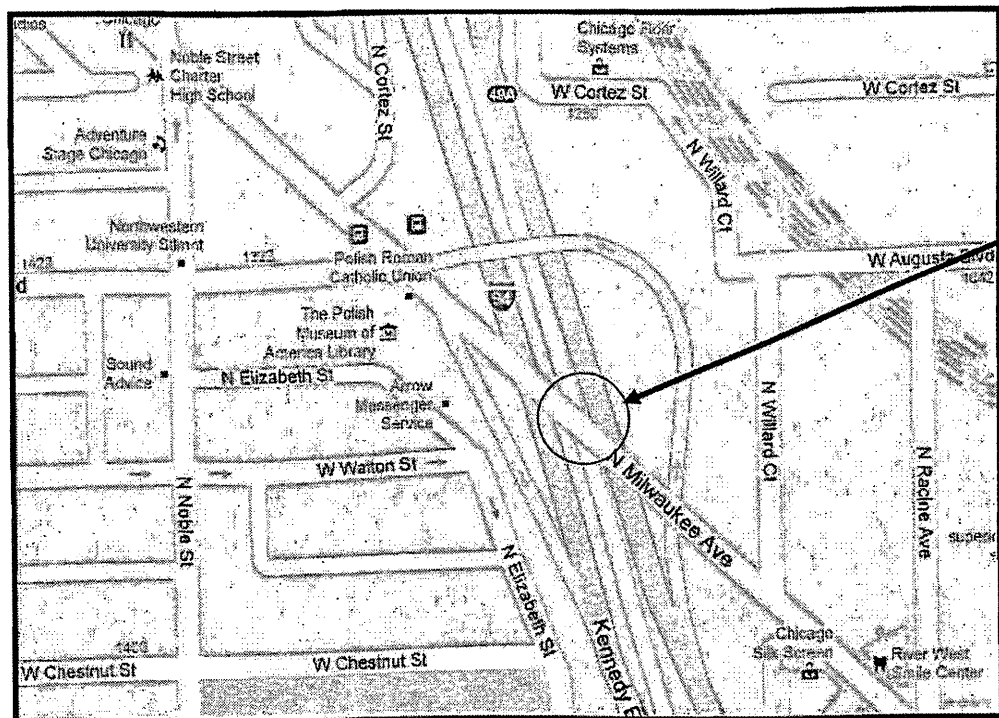
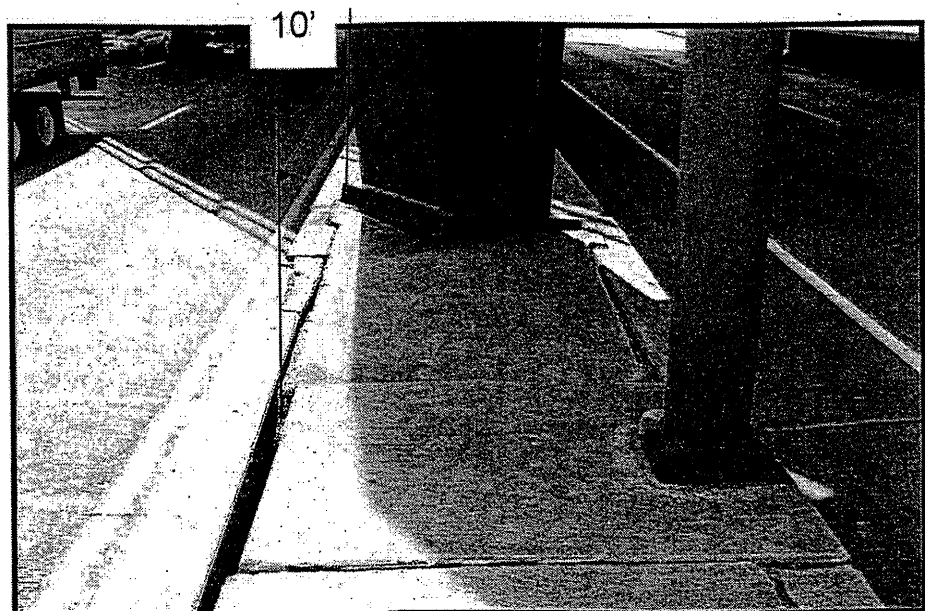


R 14 E

T 39 N



CITY OF CHICAGO
WEST TOWNSHIP
COOK COUNTY

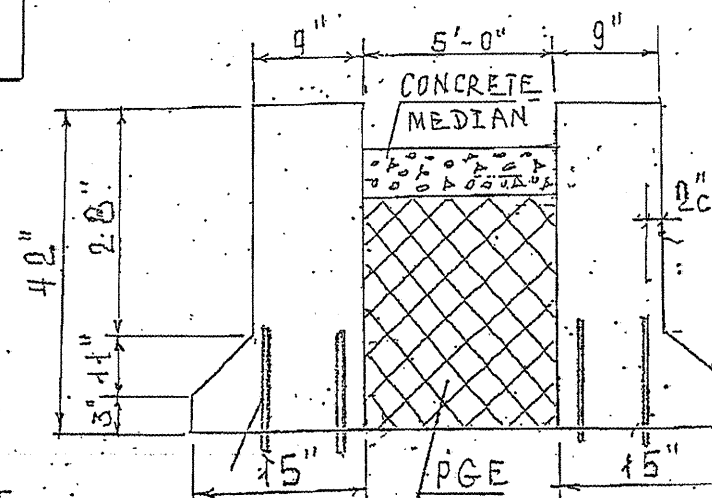
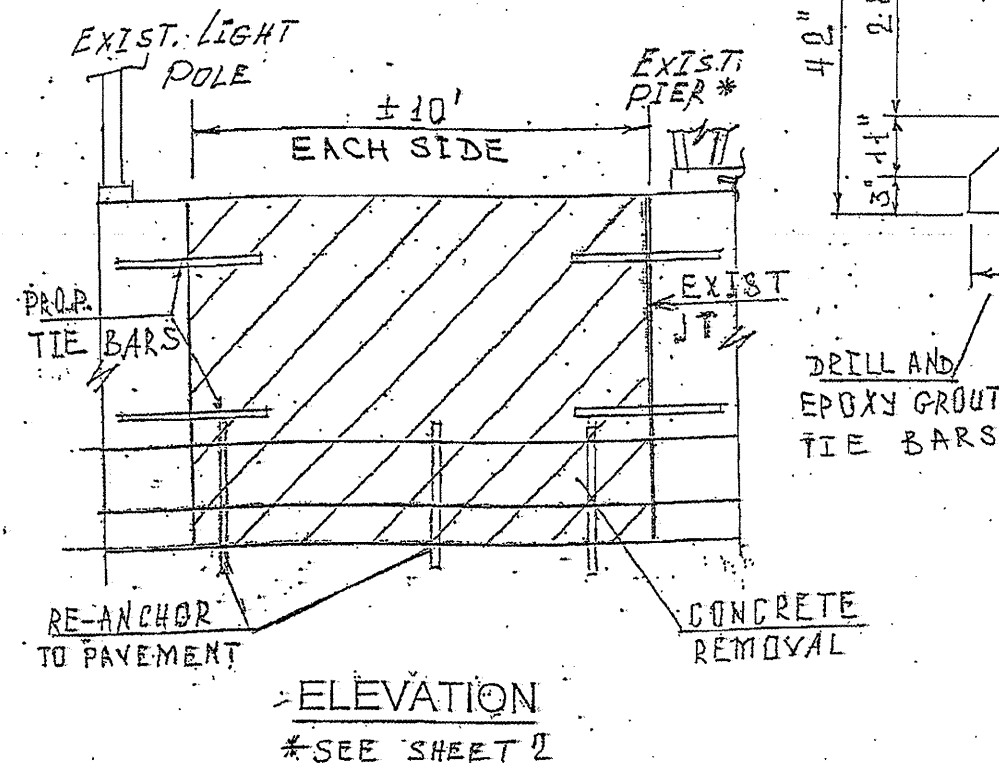


FULL DEPTH REPAIR
REPLACE 20 FT OF BARRIER WALL AND
5 FT X 7.5 FT CONCRETE SLAB
BETWEEN THE BARRIER WALLS.
FOR MORE DETAILS SEE SHEET # 8

ROUTE	SECTION	COUNTY	TOTAL SHEETS	SHEET NUMBER
VARIOUS	2010-069-I	VARIOUS	34	11

Contract 60L54

LOCATION 1: I-90/94 (JFK)
BARRIER WALL BETWEEN OUTBOUND
LANES AND REVERSIBLE LANES, JUST
NORTH OF BENT COLUMN TO SN 016-2045
(MILWAUKEE AVE OVER I-90/94)



SECTION

FULL DEPTH BARRIER REPAIR		
EARTH EXCAVATION	(CU YD)	6.0
CONCRETE REMOVAL	(CU YD)	2.2
MEDIAN REMOVAL	(SQ FT)	50
CONCRETE STRUCTURE	(CU YD)	2.2
POROUS GRANULAR EMBANKMENT	(CU YD)	6.0
CONCRETE MEDIAN, 5"	(SQ FT)	50
FOR INFORMATION ONLY		

SHEET 1 OF 2

THE CONTRACTOR SHALL EXERCISE CAUTION NOT TO DAMAGE
EXISTING LIGHT POLE AND PIER COLUMN FOUNDATIONS.

TRAFFIC DATA:
I-90/94: SPEED LIMIT = 55 MPH
2008 ADT = 310700

ILLINOIS DEPARTMENT OF TRANSPORTATION

LOCATION: 1
I-90/94 (JFK)