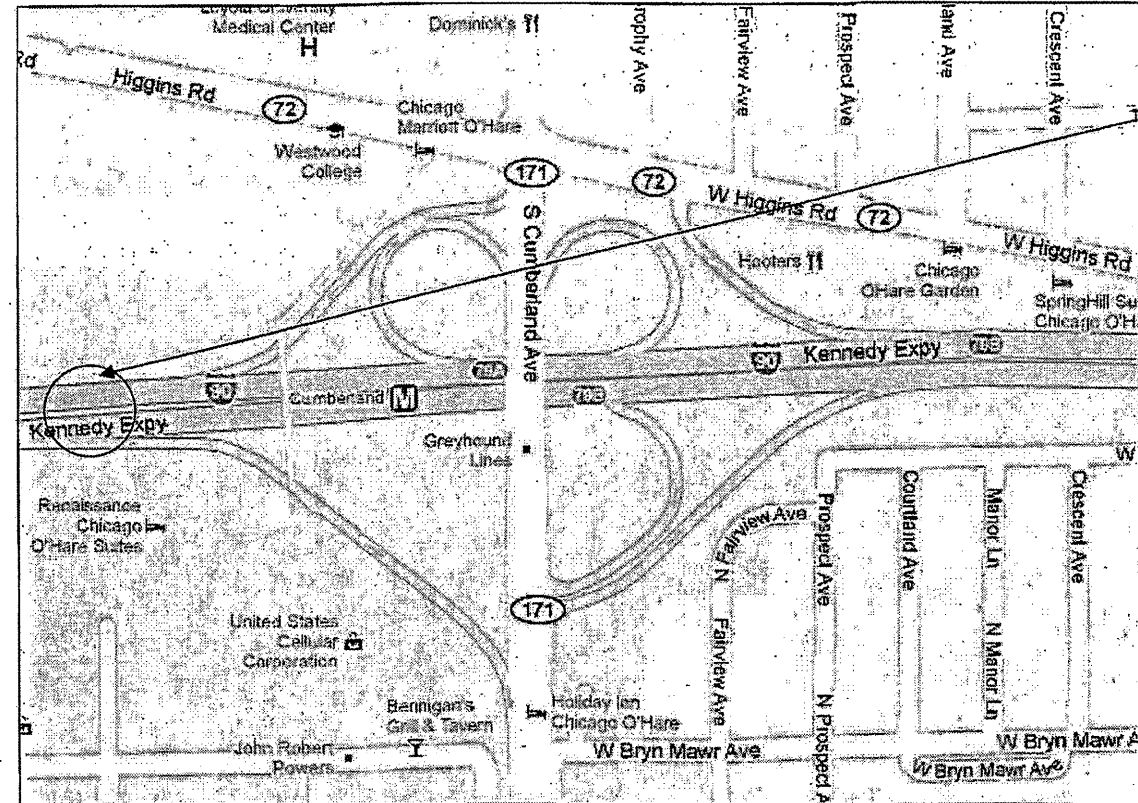


R 12 E

ROUTE VARIOUS	SECTION 2010-069-I	COUNTY VARIOUS	TOTAL SHEETS 34	SHEET NUMBER 13
------------------	-----------------------	-------------------	--------------------	--------------------

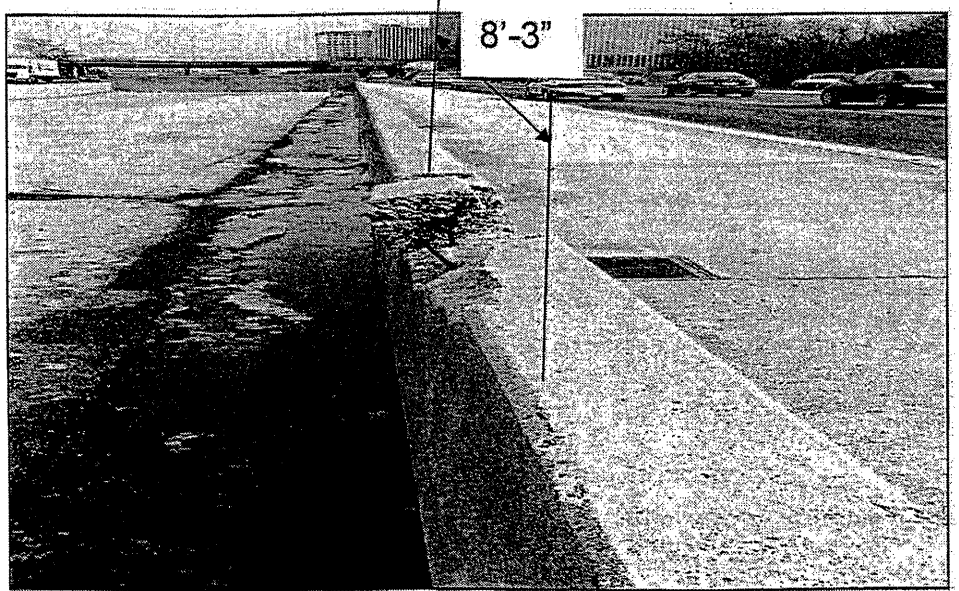
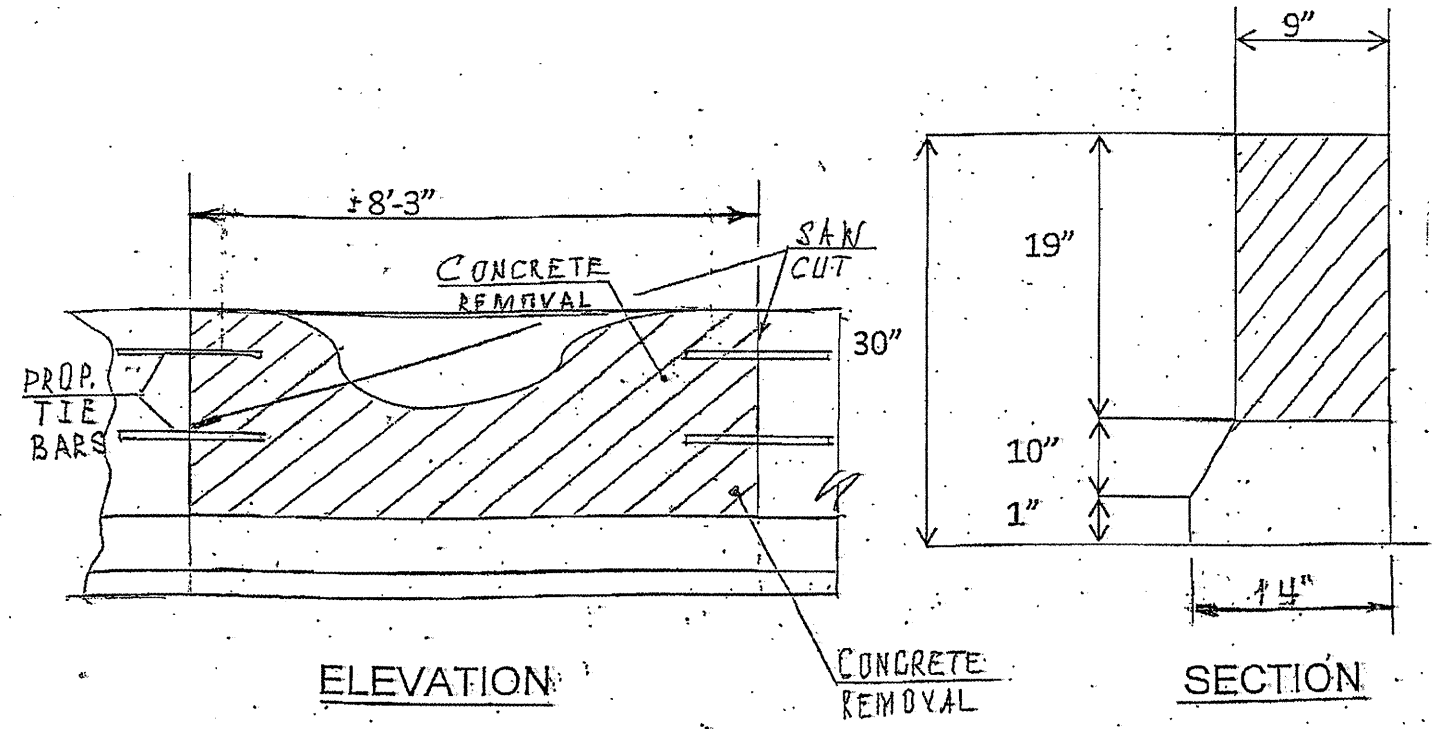
Contract 60L54



LOCATION 2: I-90 (KENNEDY EXPY), EB AT THE END OF THE TOLLWAY WEST OF CUMBERLAND (171) EXIT, LEFT SIDE.

T 40N

CITY OF PARK RIDGE
MAINE TOWNSHIP
COOK COUNTY



PARTIAL DEPTH REPAIR
FOR MORE DETAILS SEE SHEET #9

PARTIAL DEPTH BARRIER REPAIR	
CONCRETE REMOVAL (CU YD)	0.40
CONCRETE STRUCTURE (CU YD)	0.40
FOR INFORMATION ONLY	

TRAFFIC DATA:
I-90/94: SPEED LIMIT = 55 MPH
2008 ADT = 298400

ILLINOIS DEPARTMENT OF TRANSPORTATION
LOCATION: 2
I-90 (KENNEDY EXPRESSWAY)