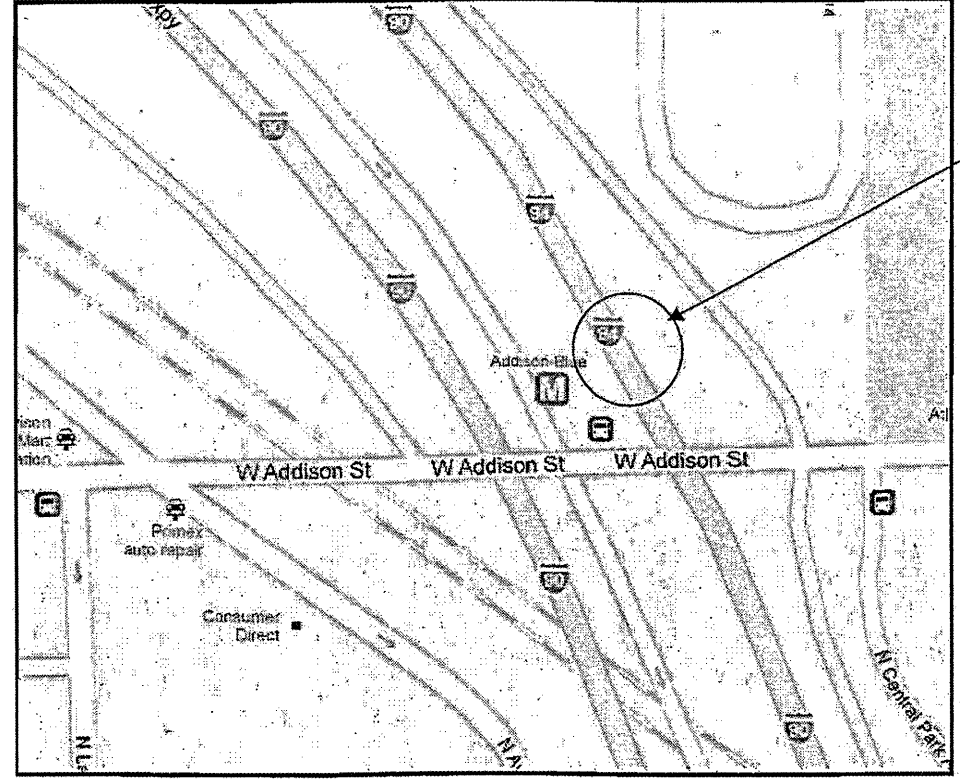


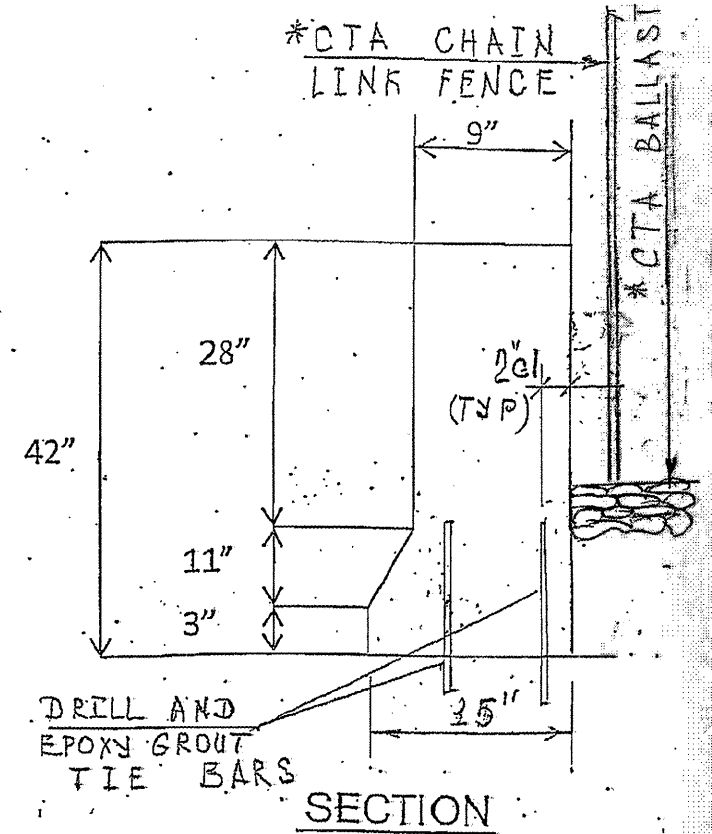
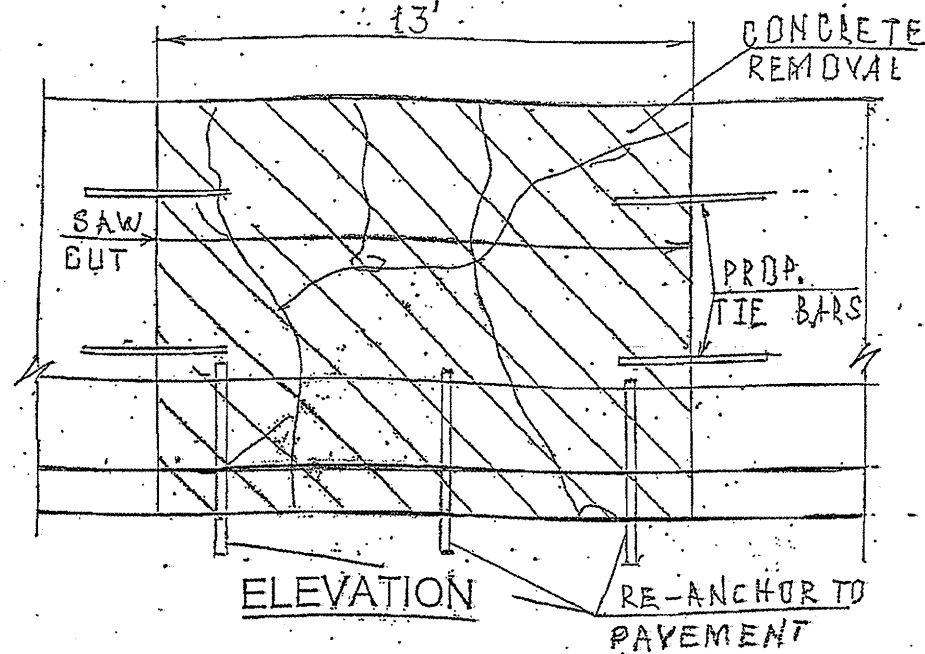
R 13 E

ROUTE	SECTION	COUNTY	TOTAL SHEETS	SHEET NUMBER
VARIOUS	2010-069-1	VARIOUS	34	18

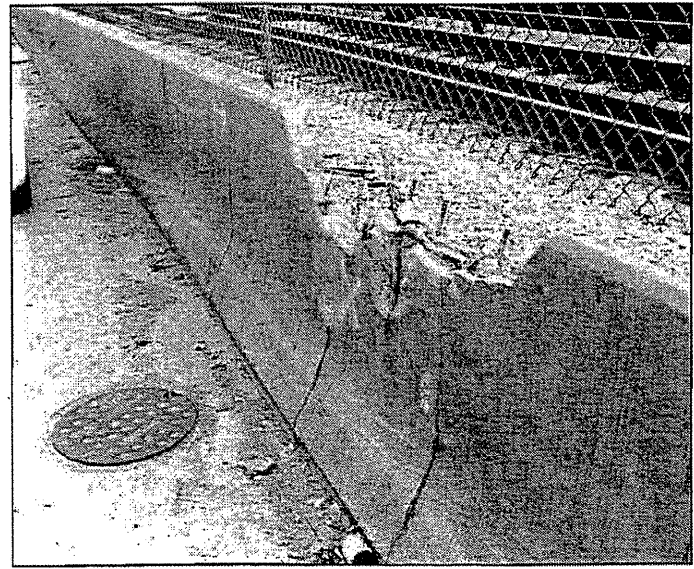
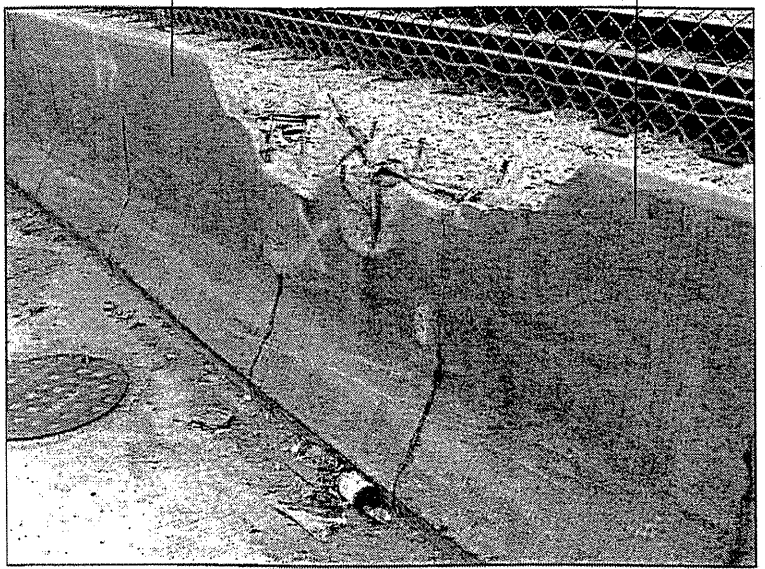
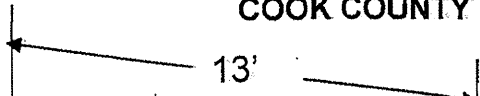
Contract 60L54



**LOCATION 7: (KENNEDY EXPY)
OUTBOUND, NORTH OF ADDISON,
LEFT SIDE, BY CTA TRACKS**



CITY OF CHICAGO
WEST TOWNSHIP
COOK COUNTY



FULL DEPTH BARRIER REPAIR
FOR MORE DETAILS SEE SHEET # 8.

FULL DEPTH BARRIER REPAIR	
CONCRETE REMOVAL (CU YD)	1.5
CONCRETE STRUCTURE (CU YD)	1.5
FOR INFORMATION ONLY	

*DO NOT DISTURB

TRAFFIC DATA:
I-90: SPEED LIMIT = 55 MPH
2008 ADT = 300200

ILLINOIS DEPARTMENT OF TRANSPORTATION
LOCATION: 7
I-90 (KENNEDY EXPRESSWAY)