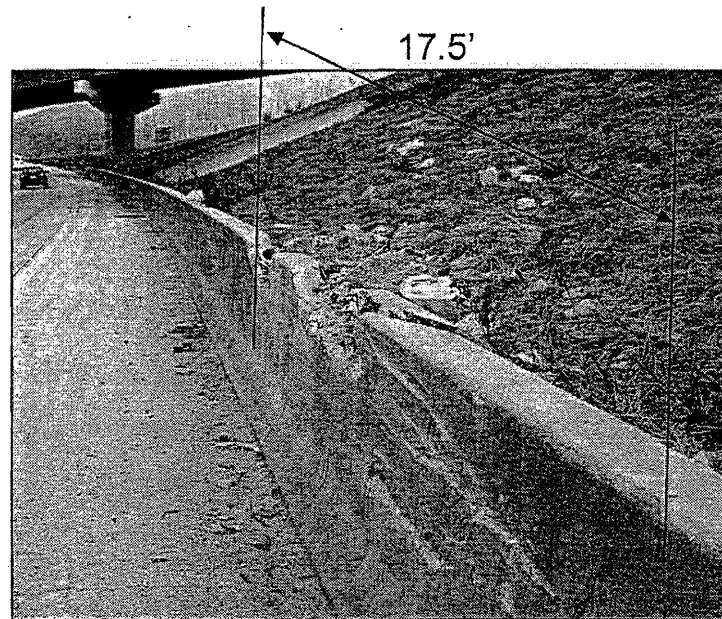
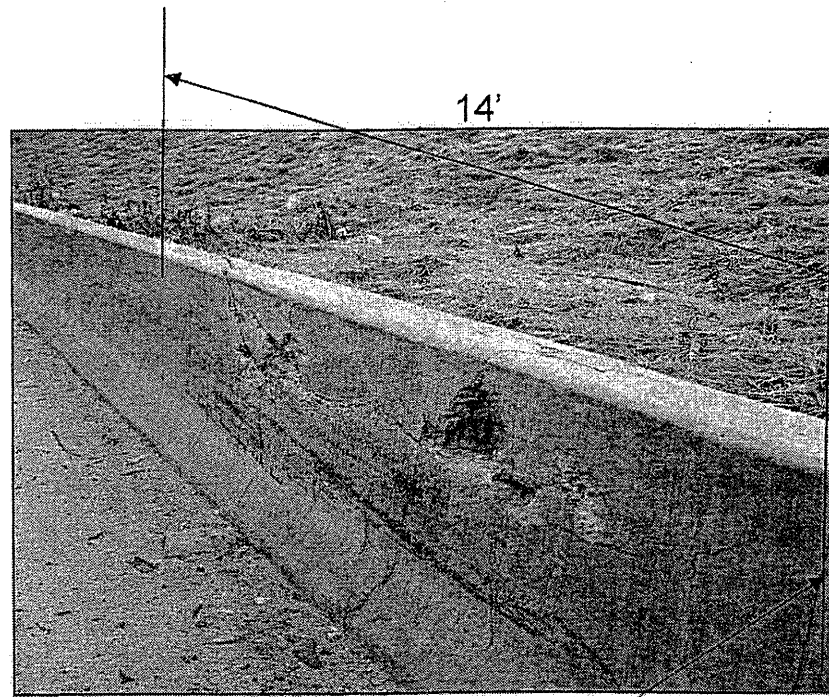


| | | | | |
|---------|------------|---------|--------------|--------------|
| ROUTE | SECTION | COUNTY | TOTAL SHEETS | SHEET NUMBER |
| VARIOUS | 2010-069-1 | VARIOUS | 34 | 21 |

Contract 60L54



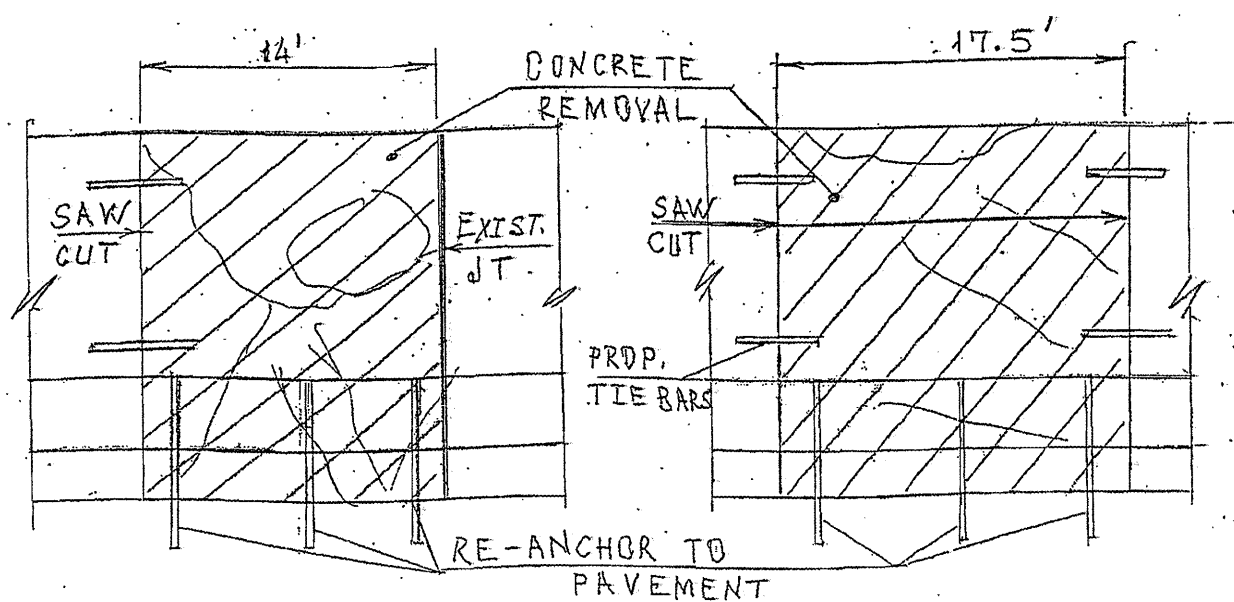
| FULL DEPTH BARRIER REPAIR | | |
|-----------------------------------|---------|-------|
| CONCRETE REMOVAL | (CU YD) | 3.6 |
| CONCRETE STRUCTURE | (CU YD) | 3.6 |
| POROUS GRANULAR EMBANKMENT | (CU YD) | 7.0 |
| EARTH EXCAVATION | (CU YD) | 8.0 |
| TOPSOIL FURNISH AND PLACE, 4" | (SQ YD) | 7.0 |
| SEEDING, CLASS 2A | (ACRE) | 0.002 |
| TEMPORARY EROSION CONTROL BLANKET | (SQ YD) | 7.0 |

FOR INFORMATION ONLY (2 AREAS)

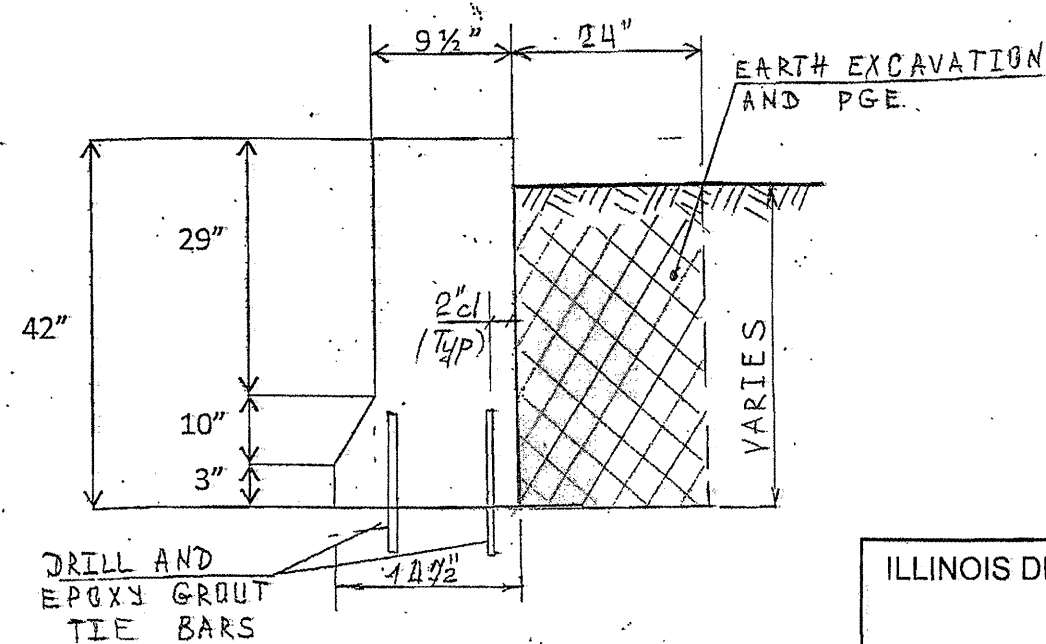
LOCATION 9

REMOVE UP TO THE CONSTR. JOINT

FULL DEPTH BARRIER REPAIR FOR MORE DETAILS SEE SHEET # 8



ELEVATION



SECTION

ILLINOIS DEPARTMENT OF TRANSPORTATION

LOCATION 9
SECTION AND ELEVATION
I-94 AT 66th STREET