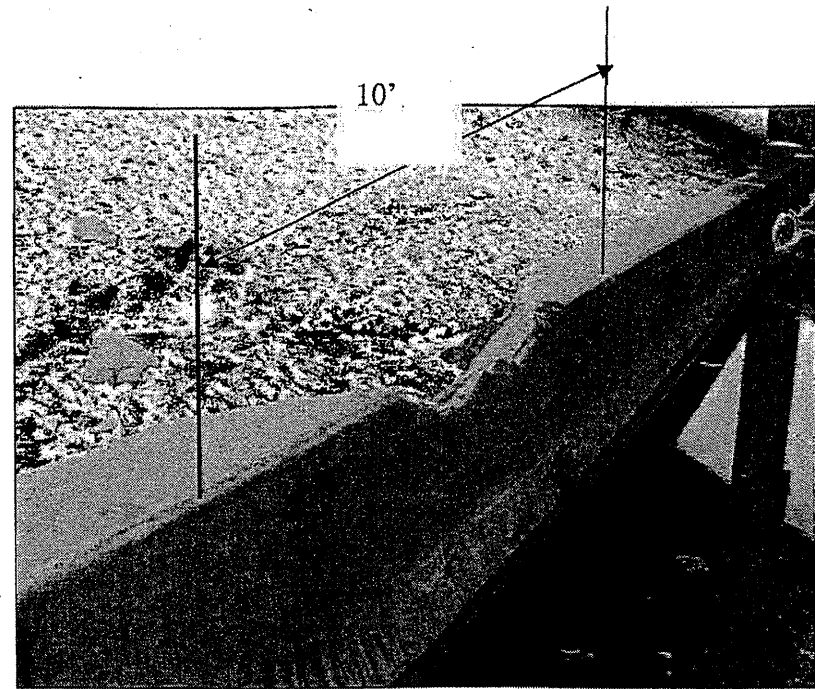
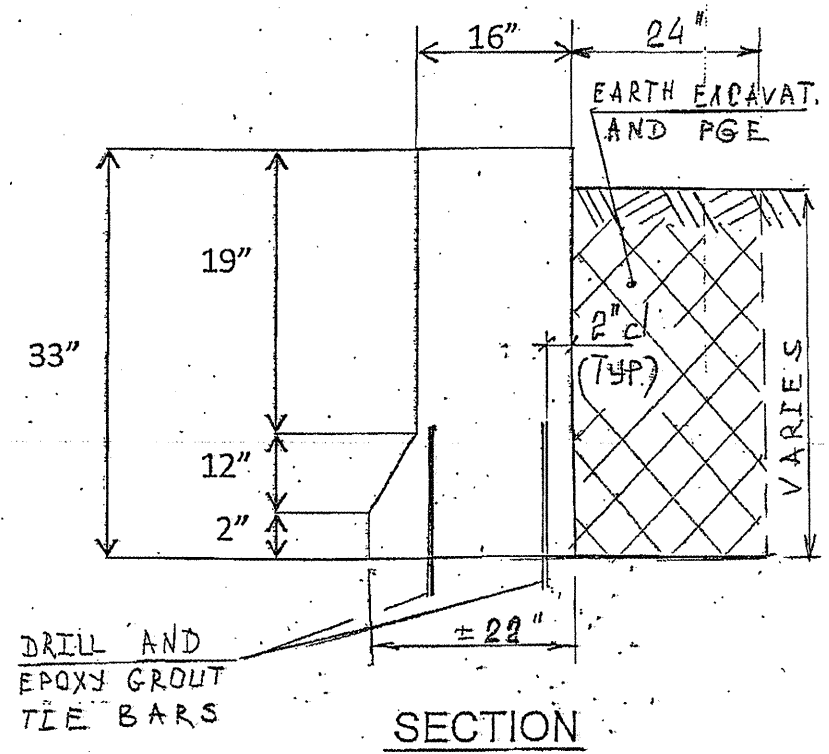
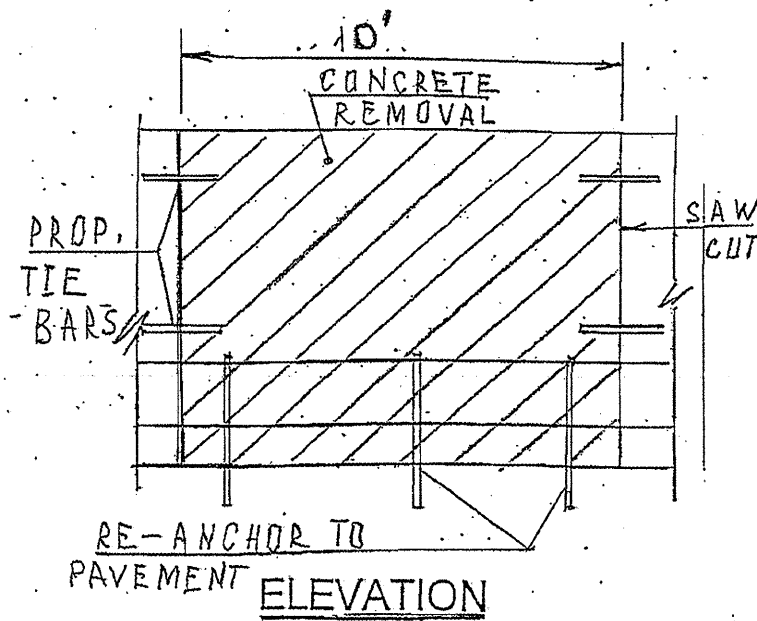


| ROUTE | SECTION | COUNTY | TOTAL SHEETS | SHEET NUMBER |
|---------|------------|---------|--------------|--------------|
| VARIOUS | 2010-069-I | VARIOUS | 34 | 23 |

Contract 60L54



LOCATION 12
FULL DEPTH BARRIER REPAIR
FOR MORE DETAILS SEE SHEET # 8



| FULL DEPTH BARRIER REPAIR | | |
|-----------------------------------|---------|--------|
| CONCRETE REMOVAL | (CU YD) | 1.6 |
| CONCRETE STRUCTURE | (CU YD) | 1.6 |
| POROUS GRANULAR EMBANKMENT | (CU YD) | 2.0 |
| EARTH EXCAVATION | (CU YD) | 2.0 |
| TOPSOIL FURNISH AND PLACE 4" | (SQ YD) | 2.5 |
| SEEDING CLASS 2A | (ACRE) | 0.0005 |
| TEMPORARY EROSION CONTROL BLANKET | (SQ YD) | 2.5 |
| FOR INFORMATION ONLY | | |

ILLINOIS DEPARTMENT OF TRANSPORTATION
LOCATION: 12
SECTION AND ELEVATION
I-94 AT 66th STREET