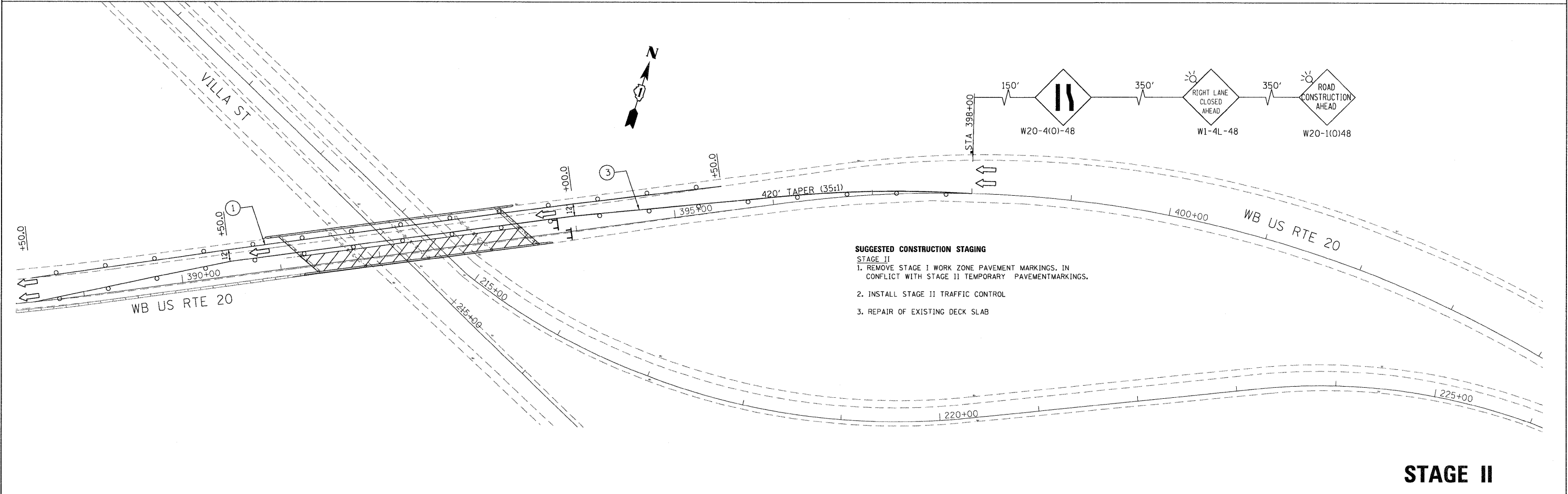


- ① PAVEMENT MARKING TAPE, TYPE III 4", SOLID WHITE LINE (TYP) (70300520)
- ② PAVEMENT MARKING TAPE, TYPE III 4", SKIP-DASH WHITE LINE, 25' SKIP, 25' DASH (TYP) (70300520)
- ③ PAVEMENT MARKING TAPE, TYPE III 4", SOLID YELLOW LINE (TYP) (70300520)
- ④ PAVEMENT MARKING TAPE, TYPE III 4", SKIP-DASH WHITE LINE, 6' SKIP, 2' DASH (70300520)

- LEGEND**
- TYPE II BARRICADES OR DRUMS WITH STEADY BURNING LIGHTS @ 50 FT CENTERS ALONG ROADWAY (TANGENT) AND 25 FT CENTERS ALONG TAPERS.
 - ⊥ TYPE III BARRICADES WITH STEADY BURNING LIGHTS
 - ▨ WORK ZONE
 - ▤ IMPACT ATTENUATOR

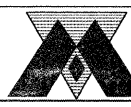
STAGE I



- SUGGESTED CONSTRUCTION STAGING**
- STAGE II**
1. REMOVE STAGE I WORK ZONE PAVEMENT MARKINGS. IN CONFLICT WITH STAGE II TEMPORARY PAVEMENT MARKINGS.
 2. INSTALL STAGE II TRAFFIC CONTROL
 3. REPAIR OF EXISTING DECK SLAB

STAGE II

FILE NAME = P:\2009\m09065_vor-ver_phi\acadd\wo2\un2\shas\DI08M46-MDT-ST1.dgn
 USER NAME = Millennium Professional Services



200 21ND Street, Suite 216, Lombard, IL 60148
 630.705.9110 voice, 630.839.2566 fax
 www.mps-il.com
MILLENNIA PROFESSIONAL SERVICES

DESIGNED - CJD	REVISED -
DRAWN - CJD	REVISED -
CHECKED - TVN	REVISED -
DATE - 4/1/2011	REVISED -

STATE OF ILLINOIS
DEPARTMENT OF TRANSPORTATION

US ROUTE 20 (LAKE STREET)
RANDALL RD TO SHALES PARKWAY
SUGGESTED STAGES OF CONSTRUCTION AND TRAFFIC CONTROL
WB US RTE 20 OVER BUS. US RTE 20

F.A.P. RTE. 345	SECTION BR-1-RS-4	COUNTY KANE/COOK	TOTAL SHEETS 124	SHEET NO. 66
CONTRACT NO. 60M46				
FED. ROAD DIST. NO. 1 ILLINOIS FED. AID PROJECT				

SCALE: SHEET NO. OF SHEETS STA. TO STA.