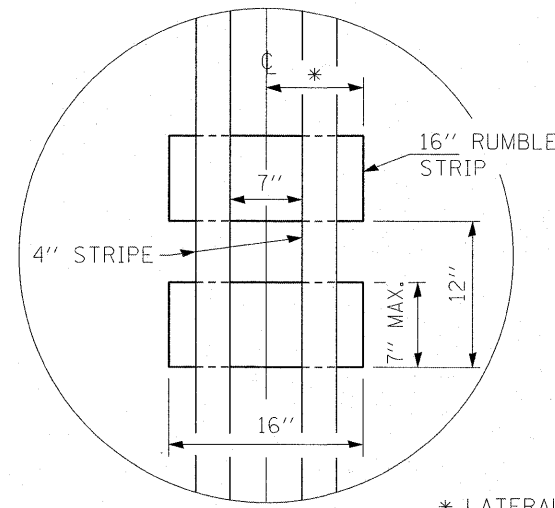
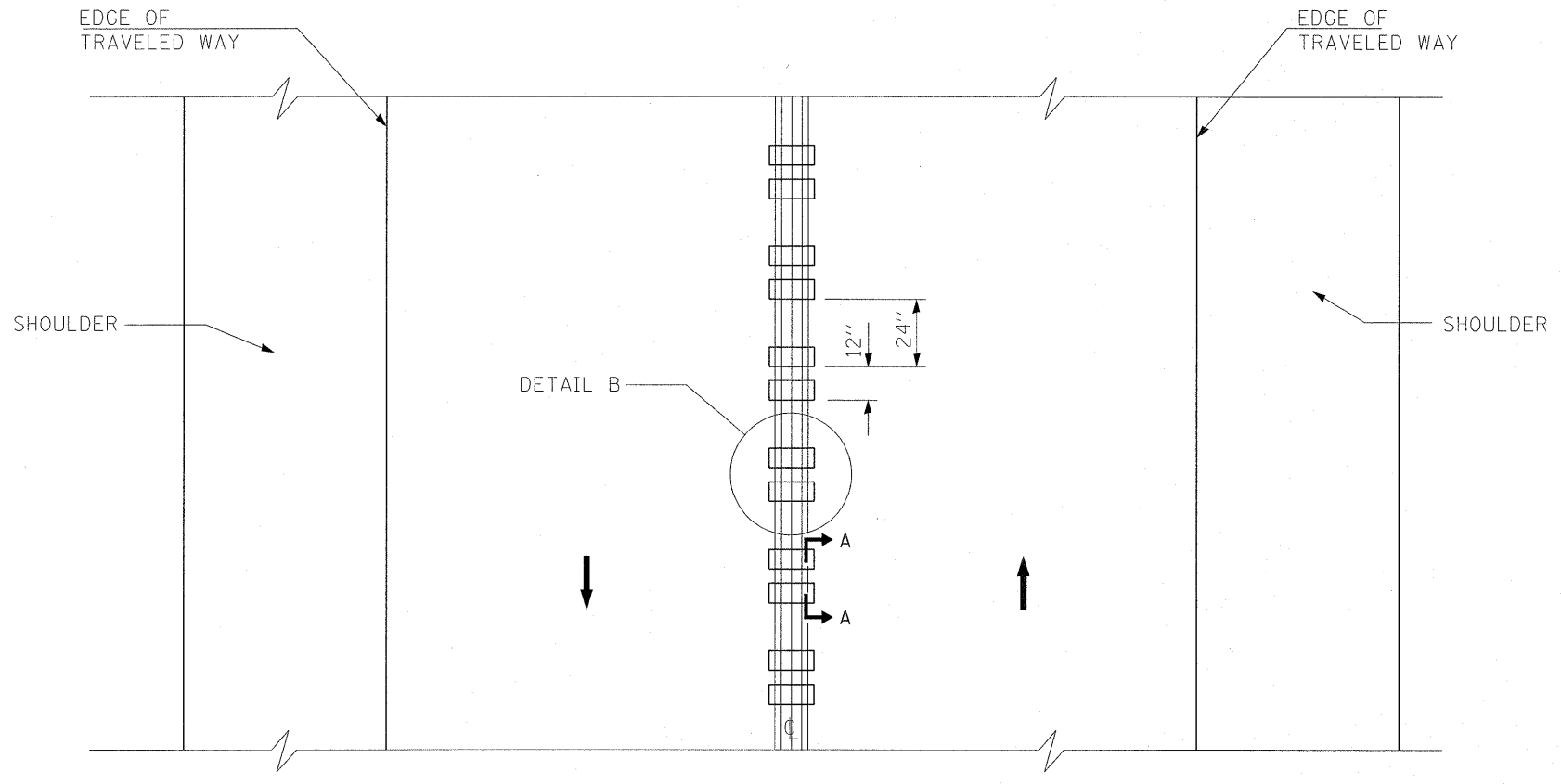


SECTION A-A



* LATERAL DEVIATION SHALL NOT EXCEED ONE INCH IN 100 FEET.

DETAIL B



TWO-WAY ROAD

GENERAL NOTES

SEE STANDARD 780001 FOR OTHER STRIPING LAYOUTS.

RUMBLE STRIPS SHALL NOT BE PLACED ON BRIDGES.

ALL RUMBLE STRIPS SHALL BE MILLED.

CENTERLINE RUMBLE STRIPS SHALL BE CONTINUOUS THROUGH CONNECTIONS OF SIDEROADS WITH NO LEFT TURN LANES.

DISCONTINUE CENTERLINE RUMBLE STRIPS THROUGH THE LIMITS OF ALL LEFT TURN LANES, INCLUDING ANY LANE TAPER SECTIONS.

WHERE USED, ADJUST SPACING OF RAISED REFLECTIVE PAVEMENT MARKERS TO FALL IN WIDER GAP BETWEEN RUMBLE STRIPS.

FILE NAME =	USER NAME = abreuah	DESIGNED -	REVISED -	STATE OF ILLINOIS DEPARTMENT OF TRANSPORTATION	RUMBLE STRIPES FOR CENTERLINE, NON-FREEWAY	F.A.P. RTE.	SECTION	COUNTY	TOTAL SHEETS	SHEET NO.	
cd:\pw_work\pwidot\abreuah\d0241076\DI1119	1-shd-plen.dgn	DRAWN -	REVISED -			339	2010-113-1	COOK	11	11	
	PLOT SCALE = 50.7684' / IN.	CHECKED -	REVISED -			CONTRACT NO. 60M47					
	PLOT DATE = 3/15/2011	DATE -	REVISED -			SCALE:	SHEET NO. OF SHEETS	STA. TO STA.	ILLINOIS FED. AID PROJECT		