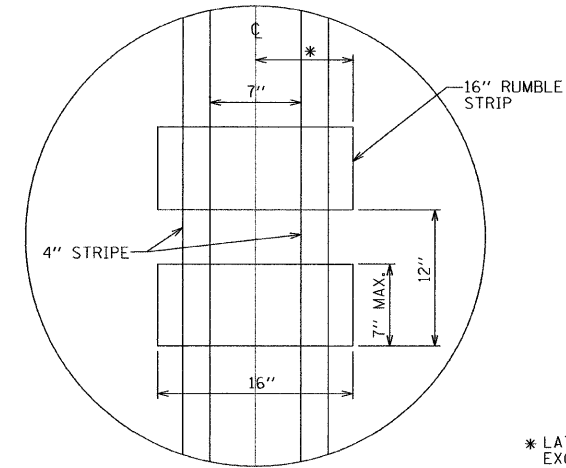
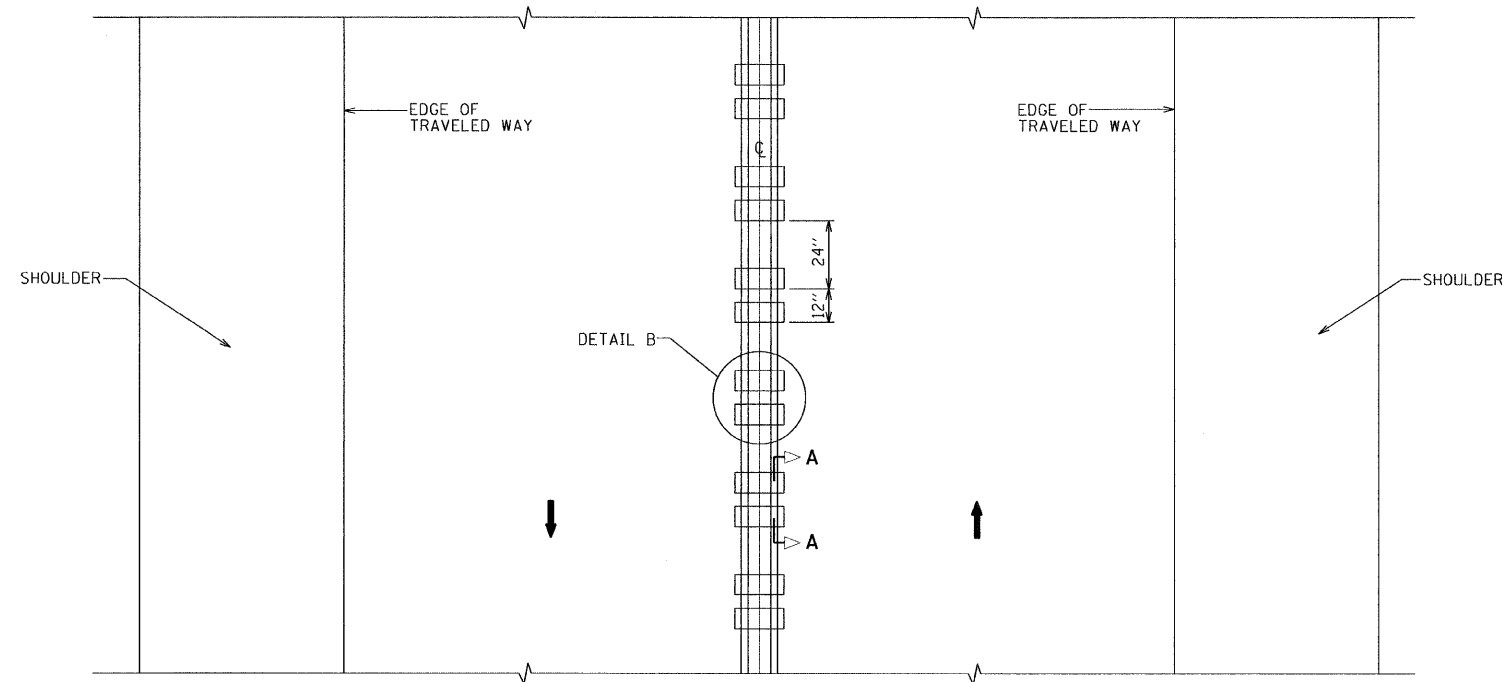


SECTION A-A



DETAIL B

* LATERAL DEVIATION SHALL NOT EXCEED ONE INCH IN 100 FT.



TWO-WAY ROAD

GENERAL NOTES:
 SEE STANDARD 780001 FOR OTHER STRIPING LAYOUTS.
 RUMBLE STRIPS SHALL NOT BE PLACED ON BRIDGES.
 ALL RUMBLE STRIPS SHALL BE MILLED.
 CENTERLINE RUMBLE STRIPS SHALL BE CONTINUOUS THROUGH CONNECTIONS OF SIDEROADS WITH NO LEFT TURN LANES.
 DISCONTINUE CENTERLINE RUMBLE STRIPS THROUGH THE LIMITS OF ALL LEFT TURN LANES, INCLUDING ANY LANE TAPER SECTIONS.
 WHERE USED, ADJUST SPACING OF RAISED REFLECTIVE PAVEMENT MARKERS TO FALL IN WIDER GAP BETWEEN RUMBLE STRIPS.
 CENTERLINE RUMBLE STRIPES TO BE PAID FOR AS CENTER LINE - RUMBLE STRIP AND THERMOPLASTIC PAVEMENT MARKING LINE 4".

| | | | | | | | | | | | |
|-------------|------------------------------|-------------------|-----------|---|---|---------------------------|------------|--------|--------------|-----------|--|
| FILE NAME = | USER NAME = .USER. | DESIGNED - EF | REVISED - | STATE OF ILLINOIS DEPARTMENT OF TRANSPORTATION | IL 19 - EAST OF DES PLAINES RIVER RD TO IL 171 CENTER RUMBLE STRIPE DETAIL | F.A.P. RTE. | SECTION | COUNTY | TOTAL SHEETS | SHEET NO. | |
| #FILE# | PLOT SCALE = 40,0000 ' / IN. | DRAWN - EF | REVISED - | | | 345 | 2010-118-1 | COOK | 17 | 12 | |
| | PLOT DATE = 4/11/2011 | CHECKED - RS | REVISED - | | | CONTRACT NO. 60M55 | | | | | |
| | | DATE - 04-12-2011 | REVISED - | | | ILLINOIS FED. AID PROJECT | | | | | |
| | | | | | SCALE: NTS | SHEET NO. 1 OF 1 SHEETS | | STA. | TO STA. | | |