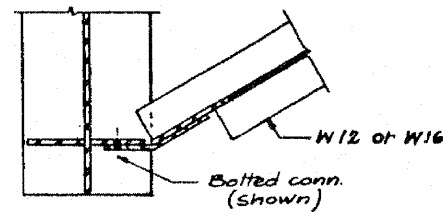
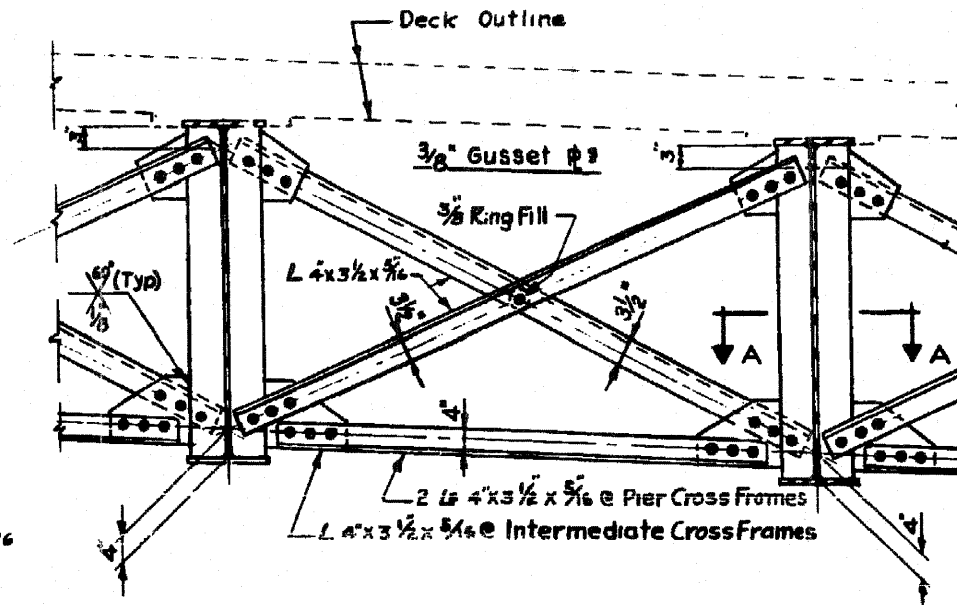


D16 (Exist. Stiff. to New Stiff.)

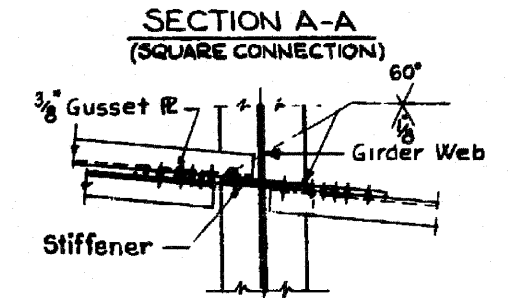
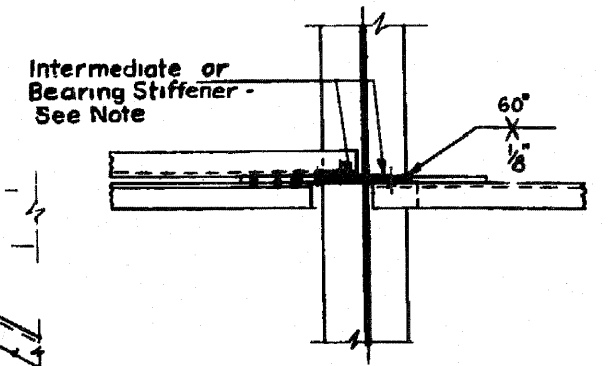
INTERIOR DIAPHRAGM AT PIER
(48" Web Girder)



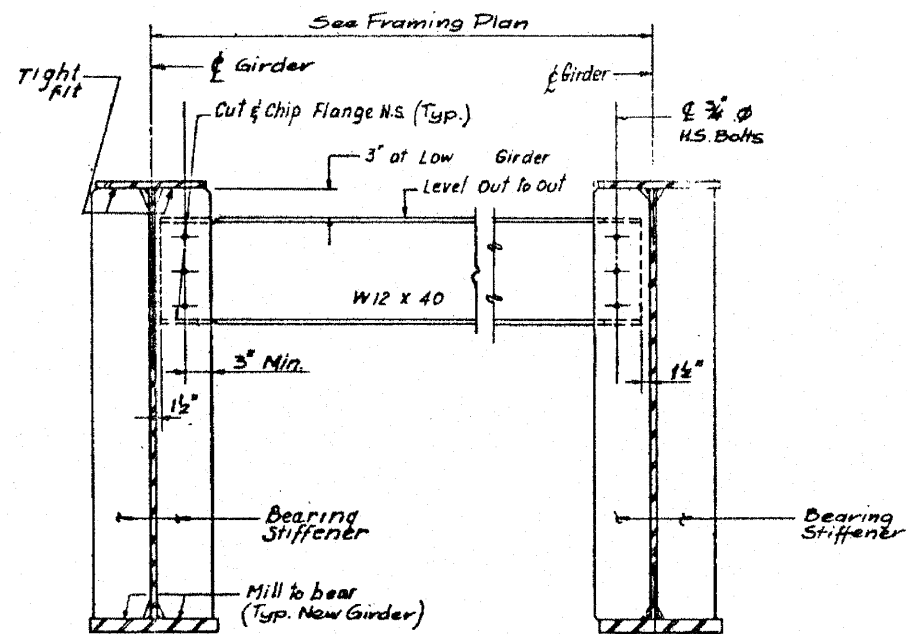
SECTION A-A



PIER CROSS FRAME CF-3
(SQUARE OR SLIGHTLY SKEWED CONNECTIONS-48" WEB GIRDERS)

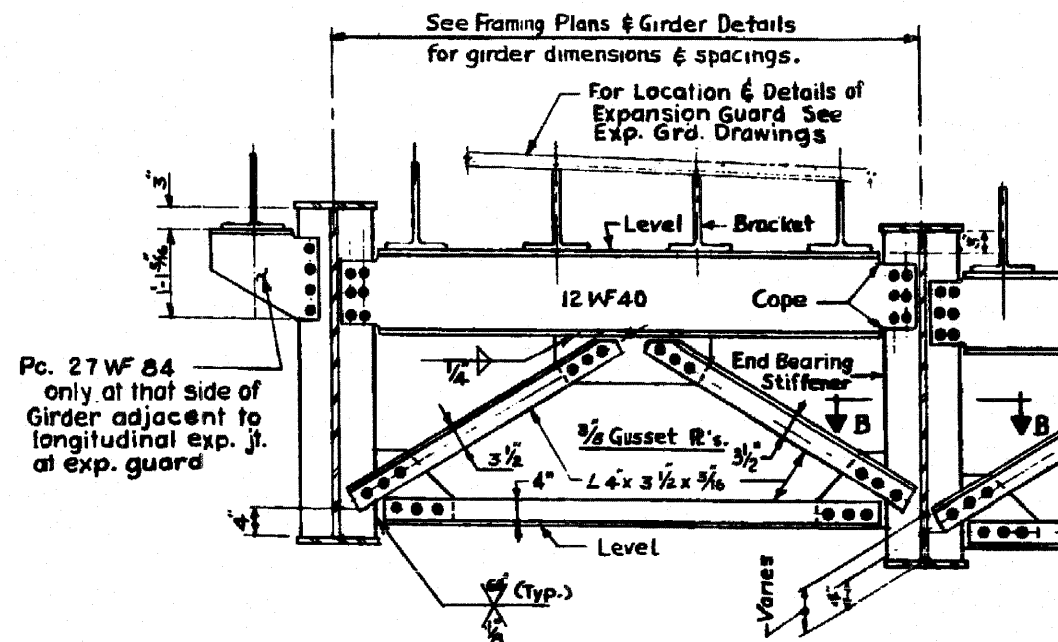


SECTION A-A
(SLIGHTLY SKEWED CONNECTION)

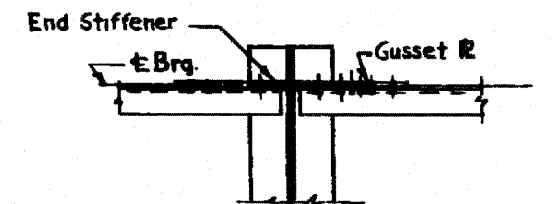


D11 (Exist. Stiff. to New Stiff.)

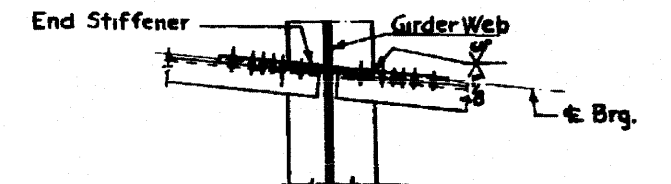
END DIAPHRAGM
(48" Web Girder)



END CROSS FRAME CF-1
(SQUARE OR SLIGHTLY SKEWED CONNECTIONS-48" WEB GIRDERS)



SECTION B-B
(SQUARE CONNECTION)



SECTION B-B
(SLIGHTLY SKEWED CONNECTION)

FILE NAME =	USER NAME = rgal1	DESIGNED - AMR	REVISED -	STATE OF ILLINOIS DEPARTMENT OF TRANSPORTATION	DIAPHRAGM & CROSS FRAME DETAILS - LOCATION 1 STRUCTURE NO. 016-1113	F.A.I. RTE.:	SECTION	COUNTY	TOTAL SHEETS	SHEET NO.	
PLOT SCALE = 1/8" = 1'-0"	DRAWN - AMR	CHECKED - JMH	REVISED -			94	2010-127-BP	COOK	160	39	
PLOT DATE = 3/28/2011	DATE - MARCH, 2011	REVISED -	REVISED -			CONTRACT NO. 60N01					
						SCALE: NTS	SHEET NO. 33 OF 40 SHEETS	STA.	TO STA.	ILLINOIS FED. AID PROJECT	