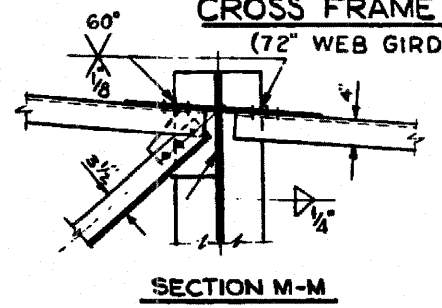
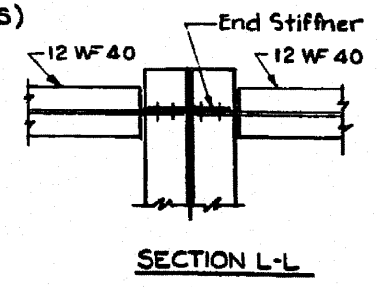
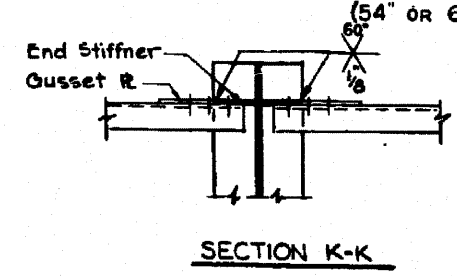


CROSS FRAME CF-7
(54" OR 60" WEB GIRDERS)

CROSS FRAME CF-9
(72" WEB GIRDERS)

LATERAL BRACING PLAN
(SPANS 10 & A9)



END CROSS FRAMES
SQUARE OR SLIGHTLY SKEWED CONNECTIONS

Note: For general layout of lateral bracing, see Framing Plans

FILE NAME *	USER NAME * rgal1	DESIGNED - AMR	REVISED -	STATE OF ILLINOIS DEPARTMENT OF TRANSPORTATION	CROSS FRAME & LATERAL BRACING DETAILS - LOCATION 1 STRUCTURE NO. 016-1113	F.A.I. RTE.	SECTION	COUNTY	TOTAL SHEETS	SHEET NO.
	PLOT SCALE = 1/8" = 1' IN.	DRAWN - AMR	REVISED -			94	2010-127-BP	COOK	160	40
	PLOT DATE = 3/28/2011	CHECKED - JMH	REVISED -			CONTRACT NO. 60N01				
				DATE - MARCH, 2011	REVISED -	SCALE: NTS	SHEET NO. 34 OF 40 SHEETS	STA.	TO STA.	ILLINOIS FED. AID PROJECT