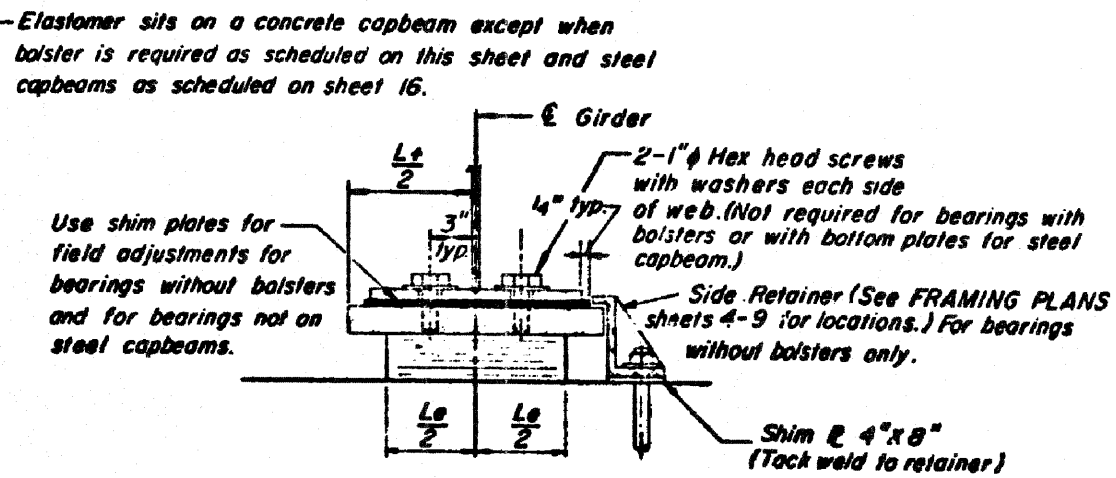
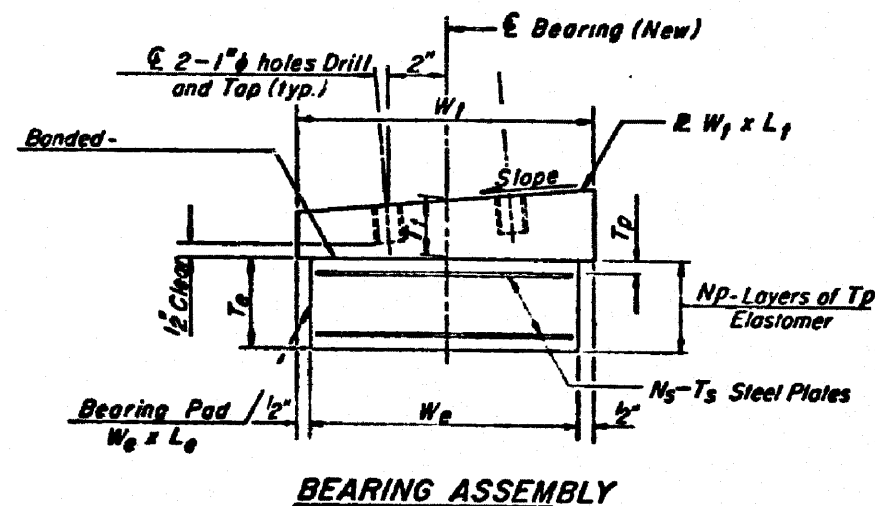


TYPICAL SECTION

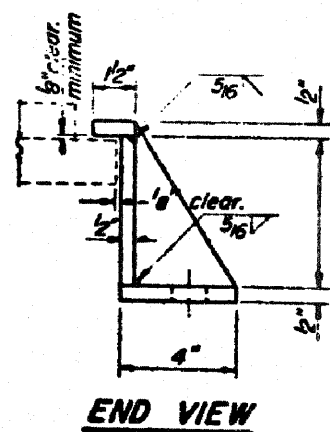


SECTION A-A

TYPE I ELASTOMERIC EXP. BRG.



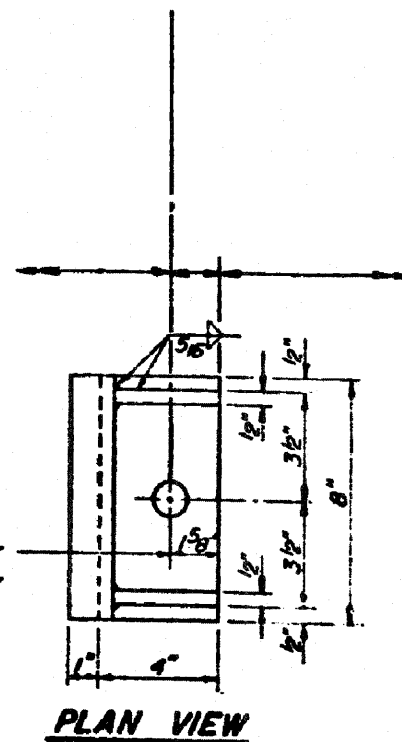
BEARING ASSEMBLY



END VIEW

Side Retainer hole 1/4" larger in diameter than bolt.

SIDE RETAINER



PLAN VIEW

TABLE OF DIMENSIONS AND THICKNESSES  
TYPE I - BEARINGS WITH BOLSTERS

Section	Pier	Girder	Bottom Plates				Shim Plate Thickness	Anchor Bolt Diameter
			W <sub>b</sub>	L <sub>b</sub>	B <sub>w</sub>	B <sub>L</sub>		
	A1(N)	C2-C4, A1-A5	11"	20"	0"	8 1/2"	•	1 1/4"
		L5-L9	11"	20"	0"	8 1/2"	•	1 1/4"
		L4	11"	20"	0"	8 1/2"	•	1 1/4"
		L2, L3, C1, C5	12"	22"	0"	8 1/2"	•	1 1/4"
105		L1, R1	11"	20"	0"	8 1/2"	•	1 1/4"
		R2-R4	12"	22"	0"	8 1/2"	•	1 1/4"
		R5-R7	12"	22"	0"	8 1/2"	•	1 1/4"
		R8	13"	24"	0"	8 1/2"	•	1 1/4"

TABLE OF DIMENSIONS - TYPE I  
ELASTOMERIC EXPANSION BEARINGS

W <sub>e</sub>	L <sub>e</sub>	Series	T <sub>p</sub>	N <sub>p</sub>	T <sub>s</sub>	N <sub>s</sub>	T <sub>e</sub>
6"	10"	a	3/8"	3	14 ga.	2	1 1/2"
6"	10"	b	3/8"	5	14 ga.	4	1 7/8"
6"	10"	c	3/8"	6	14 ga.	5	2 1/4"
7"	12"	a	3/8"	3	3/32"	2	1 5/8"
7"	12"	b	3/8"	4	3/32"	3	1 7/8"
7"	12"	c	3/8"	5	3/32"	4	2 1/4"
9"	12"	a	3/8"	5	3/32"	4	2 1/2"
9"	12"	b	3/8"	7	3/32"	6	3 1/8"
9"	12"	c	3/8"	8	3/32"	7	3 5/8"
10"	14"	a	1/2"	5	1/8"	4	2 3/4"
10"	14"	b	1/2"	6	1/8"	5	3 1/4"
10"	14"	c	1/2"	7	1/8"	6	3 5/8"
10"	14"	d	1/2"	8	1/8"	7	4 1/4"
11"	16"	a	1/2"	4	1/8"	3	2 3/4"
11"	16"	b	1/2"	5	1/8"	4	3"
11"	16"	c	1/2"	6	1/8"	5	3 3/4"
11"	16"	d	1/2"	7	1/8"	6	4 1/4"
12"	18"	a	3/8"	3	3/16"	2	2 1/2"
12"	18"	b	3/8"	4	3/16"	3	2 3/4"
12"	18"	c	3/8"	5	3/16"	4	3 1/4"
12"	18"	d	3/8"	6	3/16"	5	4 1/4"
12"	18"	e	3/8"	7	3/16"	6	5 1/4"
14"	20"	a	3/8"	7	3/16"	6	5 1/2"
15"	22"	a	3/8"	6	3/16"	5	5 1/4"
16"	24"	a	3/8"	6	3/16"	5	5 1/4"

T<sub>p</sub> denotes thickness of each elastomeric layer  
N<sub>p</sub> denotes number of elastomeric layers  
T<sub>s</sub> denotes thickness of each steel plate  
N<sub>s</sub> denotes number of steel plates

SECTION	LOCATION	GIRDER	W <sub>e</sub>	L <sub>e</sub>	SERIES	TOP PLATE			NO. REQ'D.	Δε BEARING	
						T <sub>p</sub>	W <sub>1</sub>	L <sub>1</sub>			
105	Pier A1 (N)	A1	10"	14"	a	1 3/4"	14"	18"	2.2%	1	0"
		A2-A5	10"	14"	a	1 5/8"	14"	18"	1.3%	4	0
		L1, R1	10"	14"	b	1 3/4"	14 1/2"	18"	2.3%	2	0"
		R2-R4	11"	16"	c	1 5/8"	14 1/2"	20"	2.5%	3	0"
		R5-R7	11"	16"	c	1 1/2"	14 1/2"	20"	2.5%	3	0"
		R8	12"	18"	c	1 1/2"	14 1/2"	22"	2.7%	1	0"
		L2, L3	11"	16"	b	1 3/4"	14 1/2"	20"	2.2%	2	0
		L4 - L8	10"	14"	a	1 5/8"	14 1/2"	18"	2.3%	5	0"
		L9	10"	14"	a	1 5/8"	14 1/2"	18"	1.7%	1	0"
		C1	11"	16"	b	1 3/4"	14 1/2"	20"	3.7%	1	0"
105		C2 - C4	10"	14"	a	1 1/2"	14 1/2"	18"	3.2%	3	0"
		C5	11"	16"	b	1 3/4"	14 1/2"	20"	4.0%	1	0"