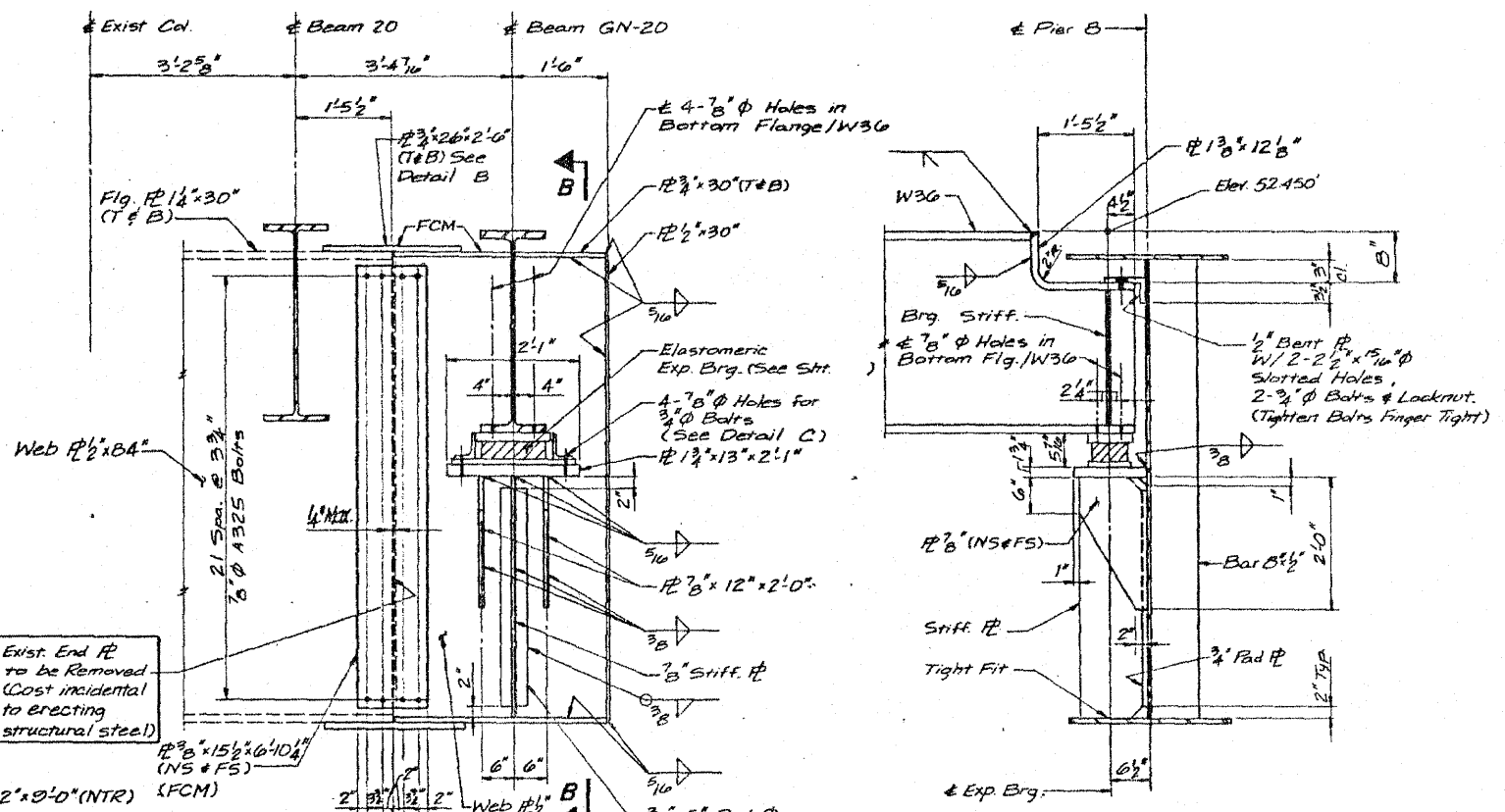


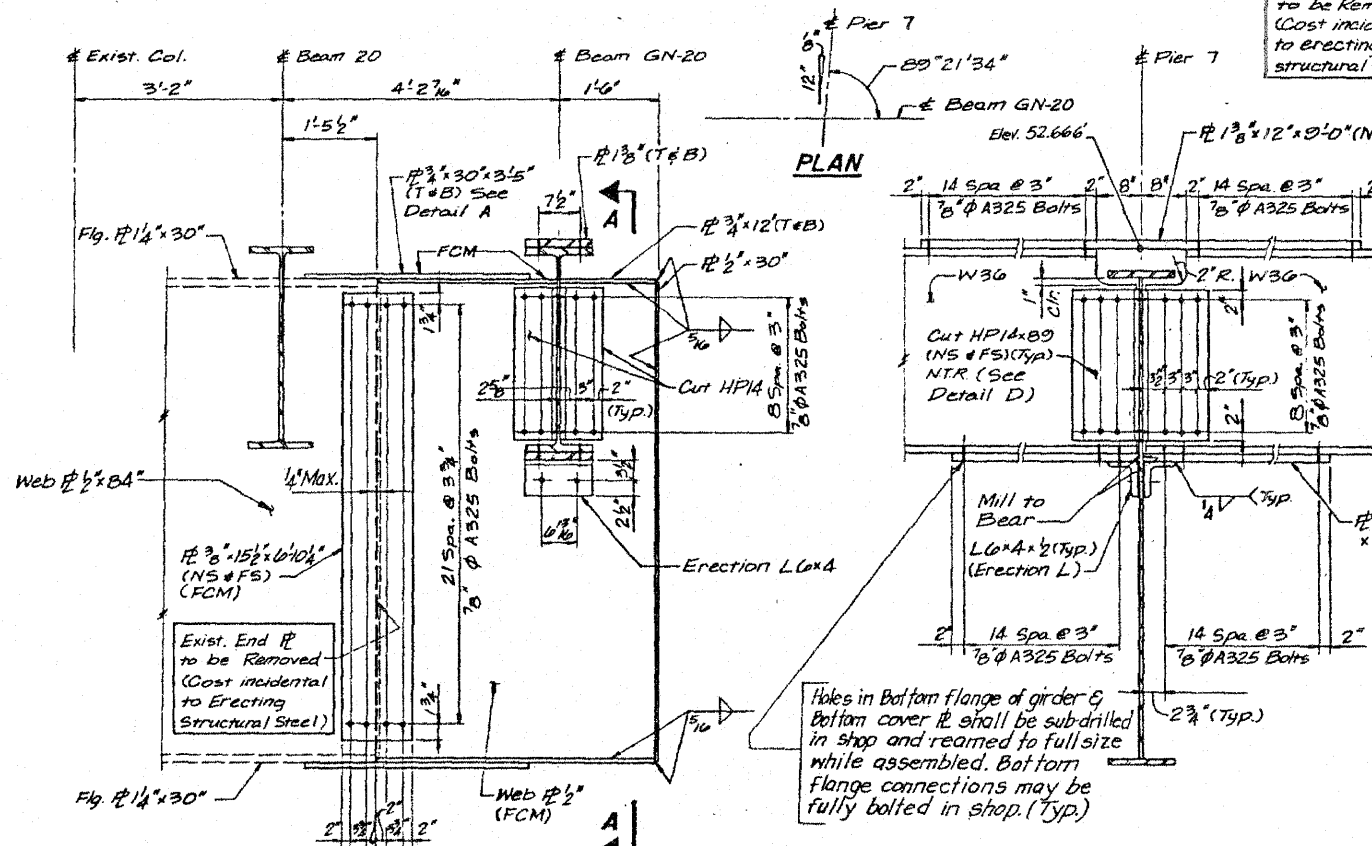
GIRDER GN-20 ELEVATION - SPANS 6 TO 8



ELEVATION

SECTION B-B

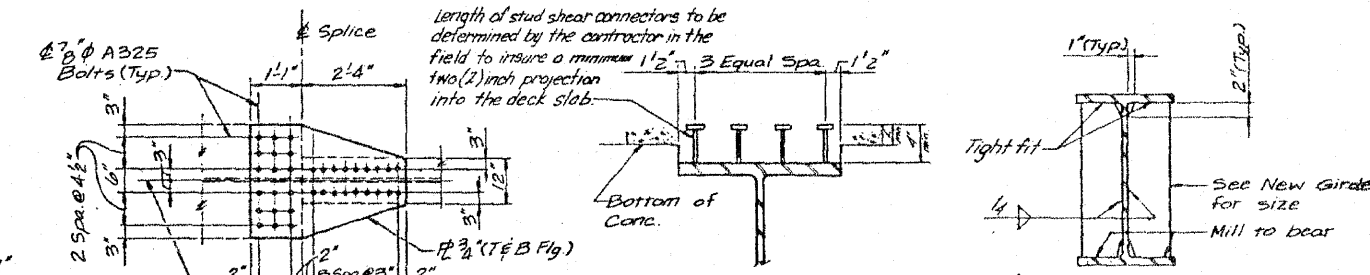
STEEL PIER - 8 EXTENSION DETAIL



ELEVATION

SECTION A-A

STEEL PIER - 7 EXTENSION DETAIL



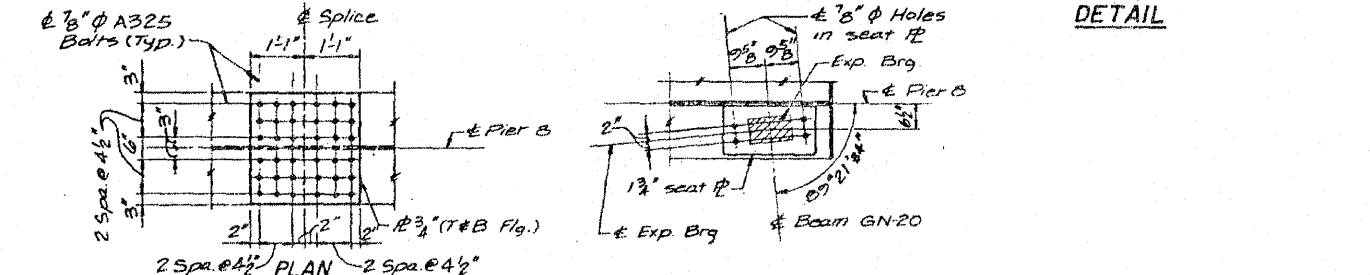
PLAN

DETAIL A

BEARING STIFFENER

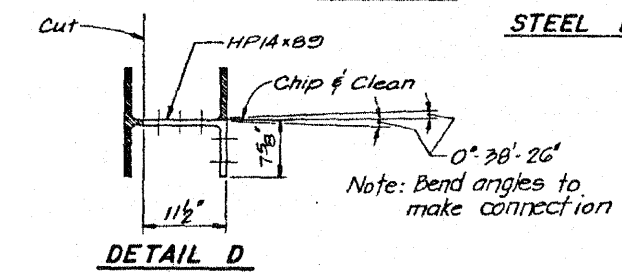
TYPICAL DETAIL OF STUD SHEAR CONNECTORS

BEARING STIFFENER



DETAIL B

DETAIL C



DETAIL D

- Note:
1. Stud shear connector locations at flange splice plates to be adjusted by installer to miss splice bolts.
  2. NTR - Notch toughness Requirement
  3. All dimensions are along girder in horizontal plane.
  4. Steel plates designated F.C.M. indicates Fracture Critical Material. Material & Fabrication shall conform to AASHTO Bridge Specification for Fracture Critical Members.

FILE NAME =	USER NAME = rpgall	DESIGNED - AMR	REVISED -	STATE OF ILLINOIS DEPARTMENT OF TRANSPORTATION	GIRDER ELEVATIONS & STEEL PIER DETAILS - LOCATION 2 STRUCTURE NO. 016-1115	F.A.I. RTE.	SECTION	COUNTY	TOTAL SHEETS	SHEET NO.	
		DRAWN - AMR	REVISED -			94	2010-127-BP	COOK	160	70	
		CHECKED - JMH	REVISED -			CONTRACT NO. 60N01					
		DATE - MARCH, 2011	REVISED -			ILLINOIS FED. AID PROJECT					