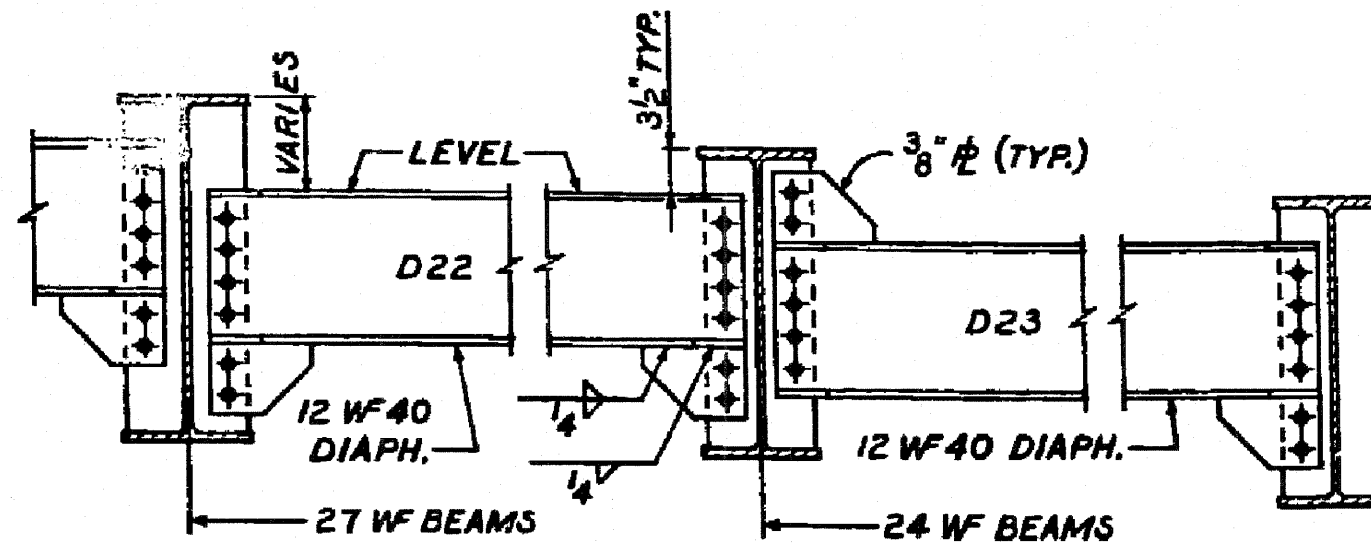
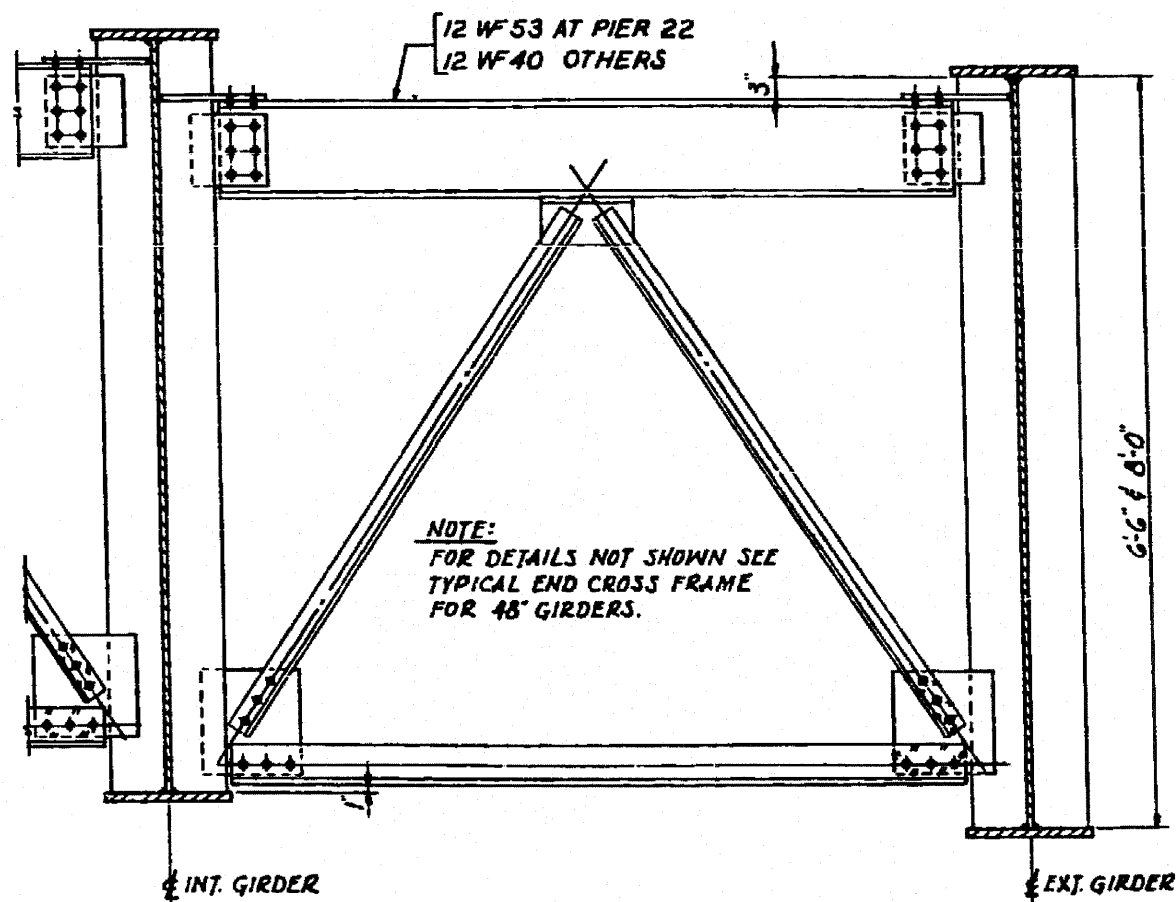


TYPICAL END CROSS FRAME FOR 48" GIRDERS
 ELEV. FOR C1 SHOWN - ELEV. FOR C2 & C3 SIMILAR



ELEVATION OF END DIAPHRAGMS D22 & D23 (SPAN 16 ONLY)



TYPICAL END CROSS FRAME FOR 78" & 96" GIRDERS
 ELEV. FOR C1 SHOWN - ELEV. FOR C2 & C3 SIMILAR

NOTE:
 FOR DETAILS NOT SHOWN SEE
 TYPICAL END CROSS FRAME
 FOR 48" GIRDERS.

FILE NAME =	USER NAME = rgal1	DESIGNED - AMR	REVISED -	STATE OF ILLINOIS DEPARTMENT OF TRANSPORTATION	DIAPHRAGM & CROSS FRAME DETAILS - LOCATION 2 STRUCTURE NO. 016-1115		F.A.I. RTE. 94	SECTION 2010-127-BP	COUNTY COOK	TOTAL SHEETS 160	SHEET NO. 76
	PLOT SCALE = 1/8" = 1'-0"	DRAWN - AMR	REVISED -		SCALE: NTS	SHEET NO. 30 OF 37 SHEETS	STA. TO STA.	ILLINOIS FED. AID PROJECT			
	PLOT DATE = 3/29/2011	CHECKED - JMH	REVISED -				CONTRACT NO. 60N01				
		DATE - MARCH, 2011	REVISED -								