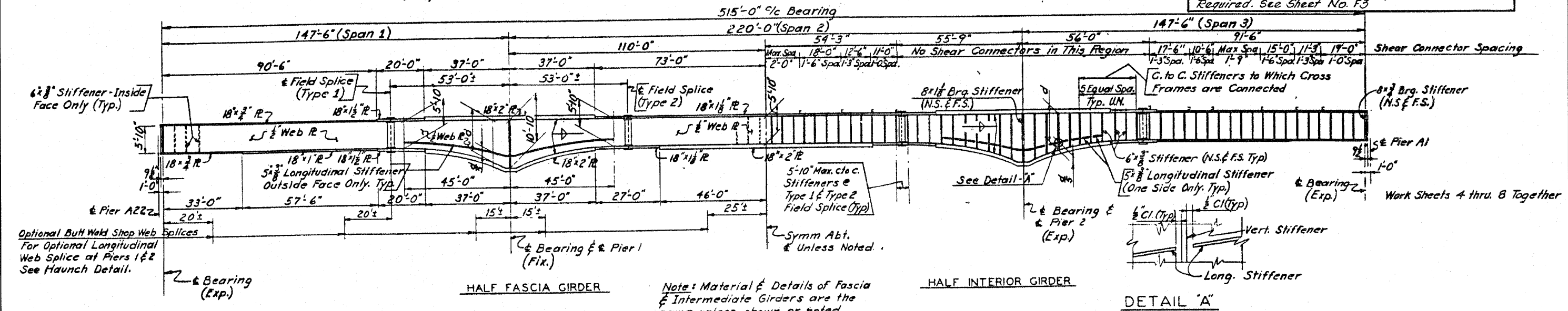


Note: There shall be no Cross Frames between Girders 5 & 6, 13 & 14, 21 & 22.

EXISTING FRAMING PLAN

NOTES
 This Sheet is furnished for Reference Only. No New Steel Plate Girders or Crossframes are Req'd. New Studs to be Added and Replaced as Required. See Sheet No. F3



Note: Material & Details of Fascia & Intermediate Girders are the same unless shown or noted.

EXISTING GIRDER ELEVATION

| | | | | | | | | | | | |
|---------------------------|-------------------|--------------------|-----------|---|---|-------------------------|----------------|---------------------------|-------------|--------------------|--------------|
| FILE NAME = | USER NAME = rgall | DESIGNED - AMR | REVISED - | STATE OF ILLINOIS DEPARTMENT OF TRANSPORTATION | FRAMING PLAN - LOCATION 4 STRUCTURE NO. 016-1114 | | F.A.I. RTE. 94 | SECTION 2010-127-BP | COUNTY COOK | TOTAL SHEETS 160 | SHEET NO. 91 |
| PLOT SCALE = 1/8" = 1'-0" | CHECKED - JMH | DATE - MARCH, 2011 | REVISED - | | SCALE: NTS | SHEET NO. 2 OF 4 SHEETS | STA. TO STA. | ILLINOIS FED. AID PROJECT | | CONTRACT NO. 60N01 | |