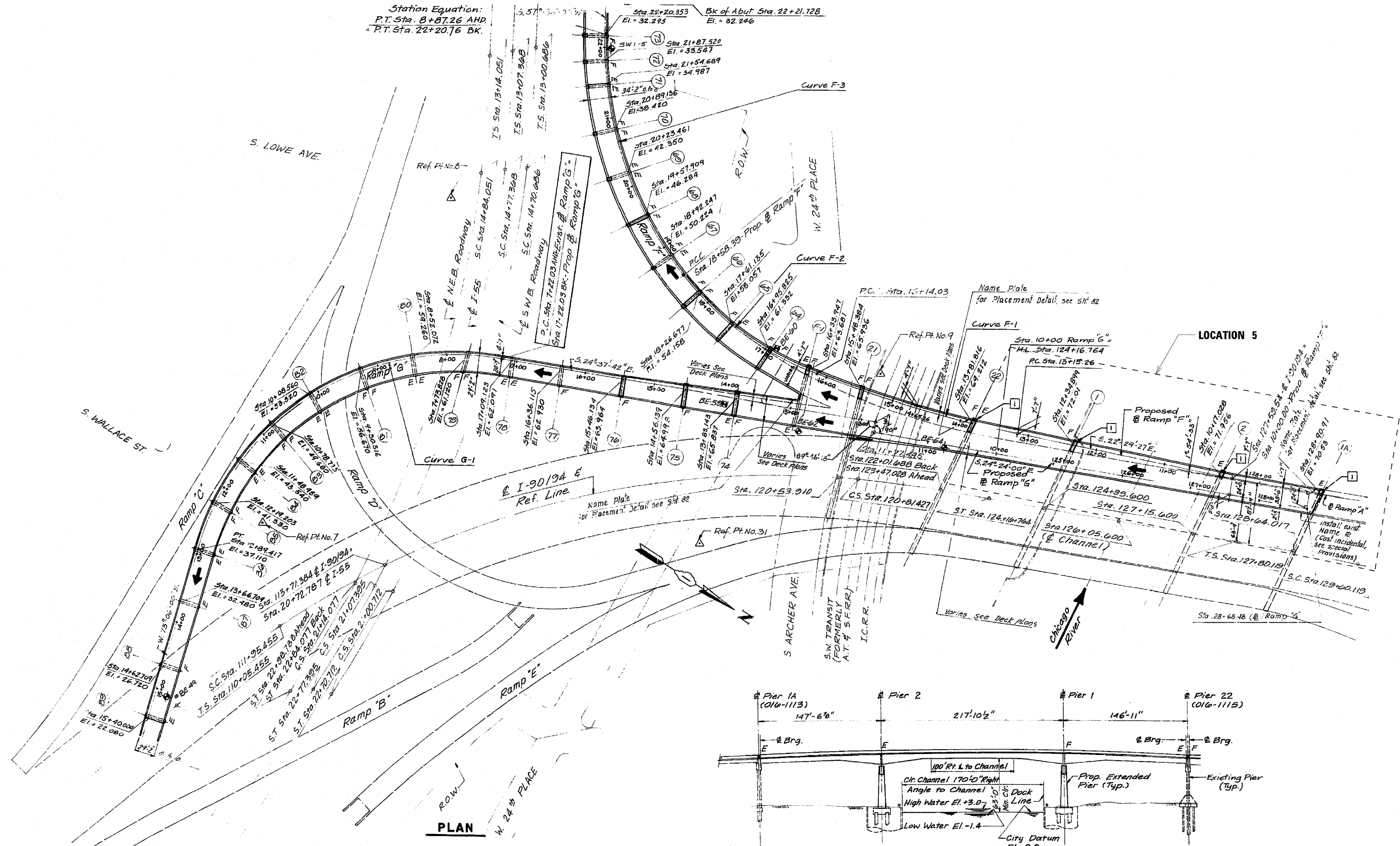


Station Equation:
 P.T. Sta. 8+87.26 AHD
 P.T. Sta. 22+20.76 BK



PLAN

ELEVATION - WEST RAMP

FILE NAME =	USER NAME = -g011	DESIGNED - AMR	REVISED -	STATE OF ILLINOIS DEPARTMENT OF TRANSPORTATION	GENERAL PLAN & ELEVATION - LOCATION 5 STRUCTURE NO. 016-1066		F.A.I. RTE. 94	SECTION 2010-127-BP	COUNTY COOK	TOTAL SHEETS 160	SHEET NO. 94
	PLOT SCALE = 1/8" = 1'-0"	DRAWN - AMR	REVISED -		SCALE: NTS	SHEET NO. 1 OF 7 SHEETS	STA. TO STA.	ILLINOIS FED. AID PROJECT			
PLOT DATE = 3/28/2011	CHECKED - JMH	DATE - MARCH, 2011	REVISED -				CONTRACT NO. 60N01				