

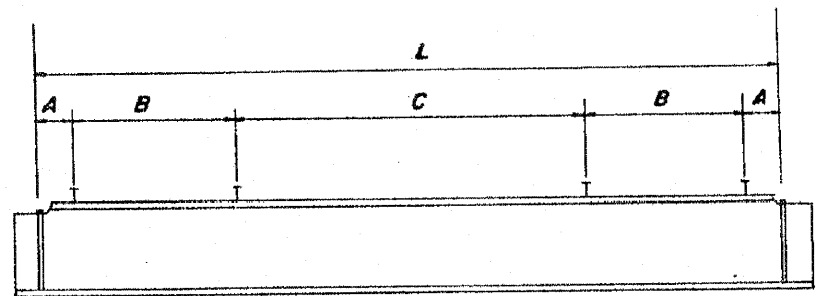
WIDE FLANGE BEAM ELEVATION

WIDE FLANGE BEAMS

SPAN	BEAM	BEAM SIZE	L (E BRG. TO E BRG.)
B1	GB-1	W36x280	88'-0 5/8"
B1	GB-2	W36x150	56'-7"

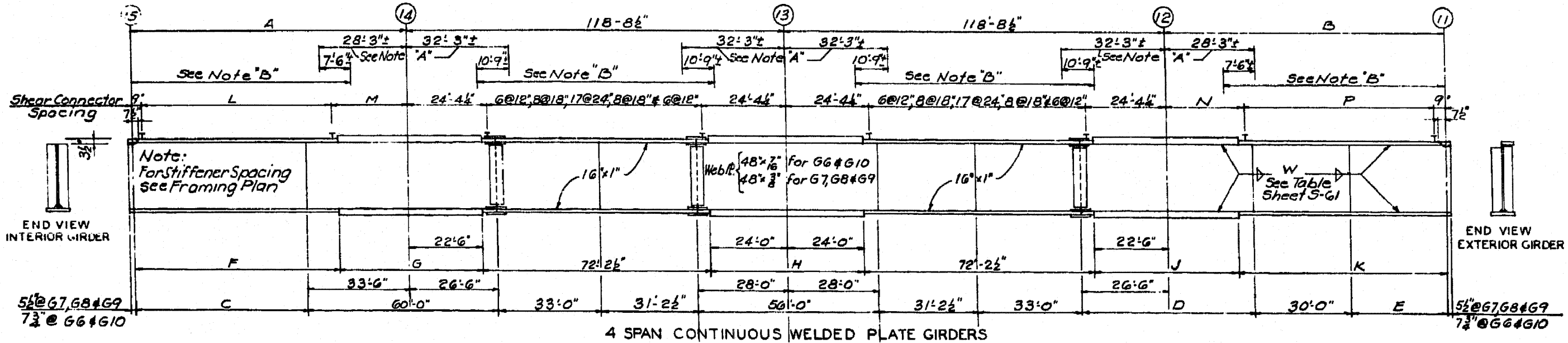
GIRDER SCHEDULE (WF ONLY)

MARK	SECTION	COVER PLATES	
		SIZE	LENGTH
G2	36WF230	15"x8"	54'-6"
G3	36WF170	11"x4"	54'-0"
G4	36WF135	11"x4"	51'-6"
G5	36WF150	11"x2"	38'-0"
G11	36WF150	11"x2"	40'-0"
G12	36WF150	11"x9/16"	47'-6"
G13	36WF170	11"x11/16"	53'-0"
G14	36WF182	11"x1"	58'-6"
G15	36WF260	15"x16"	59'-6"
G16	36WF170	11"x2"	45'-6"
G17, G18 & G19	36WF160	11"x9/16"	49'-0"
G20	36WF170	11"x8"	52'-6"
G21	36WF170	11"x2"	43'-0"
G22	36WF150	11"x9/16"	48'-0"
G23	36WF160	11"x9/16"	49'-0"
G24	36WF160	11"x9/16"	49'-0"
G25	36WF170	11"x1"	52'-6"



EXISTING GIRDERS - SIMPLE SPANS

SPAN	GIRDER	L	SPAN	GIRDER	L
	G2	74'-10"	B1	G16	68'-2 1/2"
	G3	71'-0"		G17	68'-9 1/2"
	G4	67'-2"		G18	69'-3 1/2"
	G5	59'-11 1/2"		G19	69'-10 3/8"
				G20	70'-4 1/2"
	G11	61'-2 1/4"		G21	66'-7 1/2"
B6	G12	67'-2 1/4"	B8	G22	67'-7 1/2"
	G13	75'-2 1/4"		G23	68'-7 1/2"
	G14	79'-2 1/4"		G24	69'-7 1/2"
	G15	85'-2 1/4"		G25	70'-7 1/2"



4 SPAN CONTINUOUS WELDED PLATE GIRDERS

GIRDER NO	TABLE FOR 4 SPAN CONTINUOUS WELDED PLATE GIRDERS															
	A	B	C	D	E	(TOP)	(BOTTOM)	(TOP & BOTT)	(TOP & BOTT)	(TOP & BOTT)	(TOP)	(BOTTOM)	(FROM LINE 15)	M	N	(FROM LINE 11)
G 6	79'-3 1/2"	97'-4 1/2"	45'-9 1/2"	52'-0"	41'-10 1/2"	16"x17"x63'-3 1/2"	16"x17"x63'-3 1/2"	16"x17"x38'-6"	16"x2"x48'-0"	16"x2"x42'-6"	16"x17"x77'-4 1/2"	16"x17"x77'-4 1/2"	7@12", 6@18", 14@24", 6@18", 4@12"	20'-0 1/2"	24'-7 1/2"	9@12", 6@18", 19@24", 6@18", 4@12"
G 7	83'-9 1/2"	92'-10 3/8"	50'-3 1/2"	49'-6"	39'-10 3/8"	16"x17"x66'-9 1/2"	16"x17"x66'-9 1/2"	16"x18"x39'-6"	16"x18"x48'-0"	16"x17"x41'-6"	16"x18"x73'-10 1/2"	16"x18"x73'-10 1/2"	7@12", 6@18", 16@24", 6@18", 4@12"	21'-0 1/2"	24'-1 1/2"	9@12", 6@18", 17@24", 6@18", 4@12"
G 8	88'-3 1/2"	88'-3 1/2"	54'-9 1/2"	48'-6"	36'-3 1/2"	16"x18"x70'-3 1/2"	16"x18"x70'-3 1/2"	16"x18"x40'-6"	16"x18"x48'-0"	16"x18"x40'-6"	16"x18"x70'-3 1/2"	16"x18"x70'-3 1/2"	8@12", 6@18", 17@24", 6@18", 4@12"	21'-6 1/2"	21'-6 1/2"	8@12", 6@18", 17@24", 6@18", 4@12"
G 9	92'-10 1/2"	83'-9 1/2"	59'-4 1/2"	47'-6"	32'-9 1/2"	16"x18"x73'-10 1/2"	16"x18"x73'-10 1/2"	16"x17"x41'-6"	16"x18"x48'-0"	16"x18"x39'-6"	16"x18"x66'-9 1/2"	16"x18"x66'-9 1/2"	7@12", 6@18", 17@24", 6@18", 4@12"	24'-1 1/2"	21'-0 1/2"	7@12", 6@18", 16@24", 6@18", 5@12"
G 10	97'-4 1/2"	79'-3 1/2"	63'-10 1/2"	46'-6"	29'-3 1/2"	16"x17"x77'-4 1/2"	16"x17"x77'-4 1/2"	16"x2"x42'-6"	16"x2"x48'-0"	16"x17"x38'-6"	16"x17"x63'-3 1/2"	16"x17"x63'-3 1/2"	9@12", 6@18", 19@24", 6@18", 4@12"	24'-7 1/2"	20'-6 1/2"	7@12", 6@18", 14@24", 6@18", 15@12"