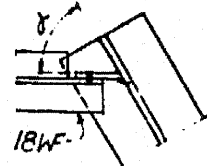
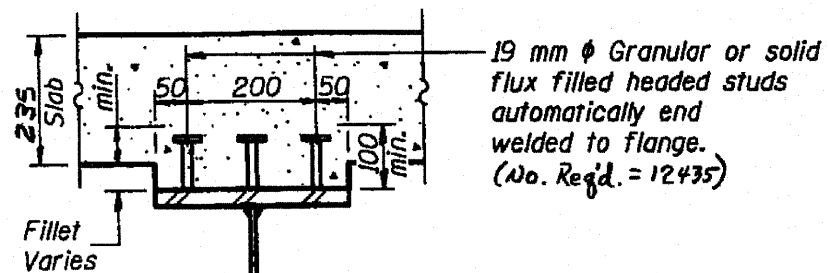


DETAIL D3

Note: Where Angle α is less than 60° use exterior connection detail for interior girders

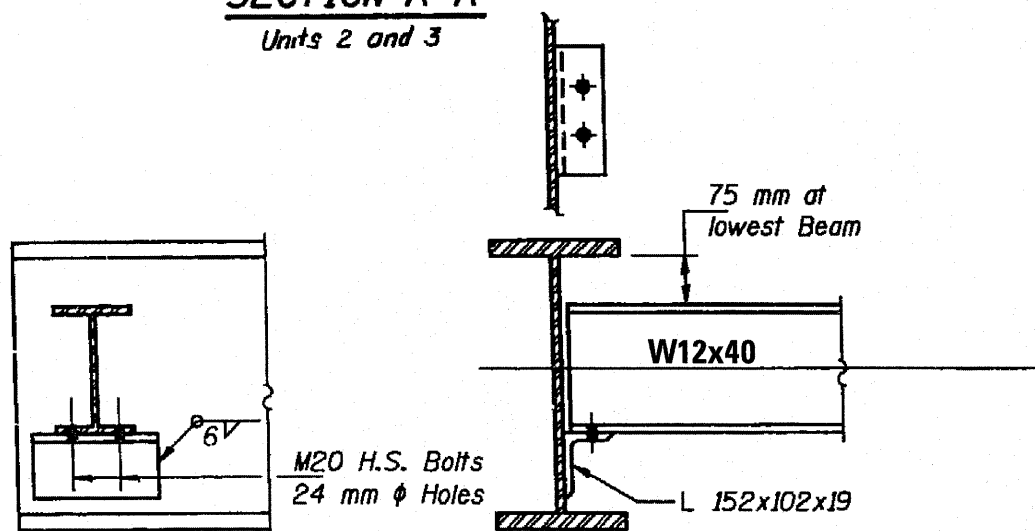


SECTION F-F



SECTION A-A

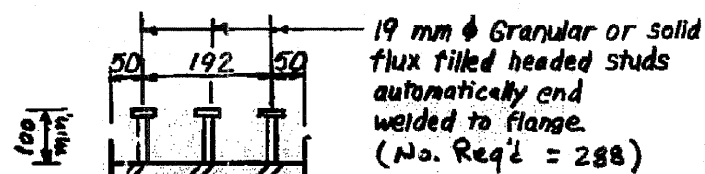
Units 2 and 3



DIAPHRAGM D

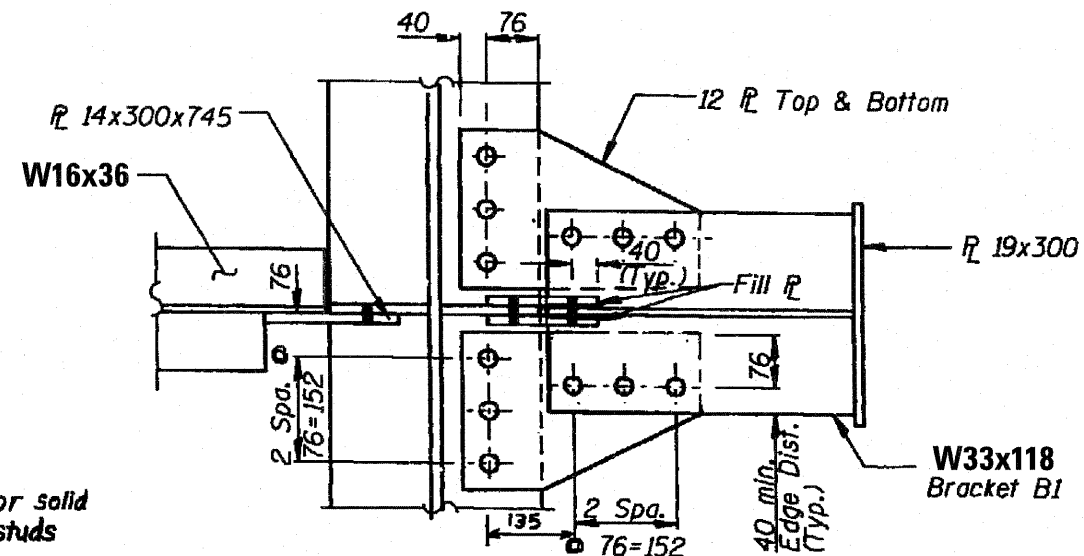
Units 2 and 3

Note: Two hardened washers shall be required over all oversize holes for diaphragms.
All dimensions are in millimeters (mm) except as noted.

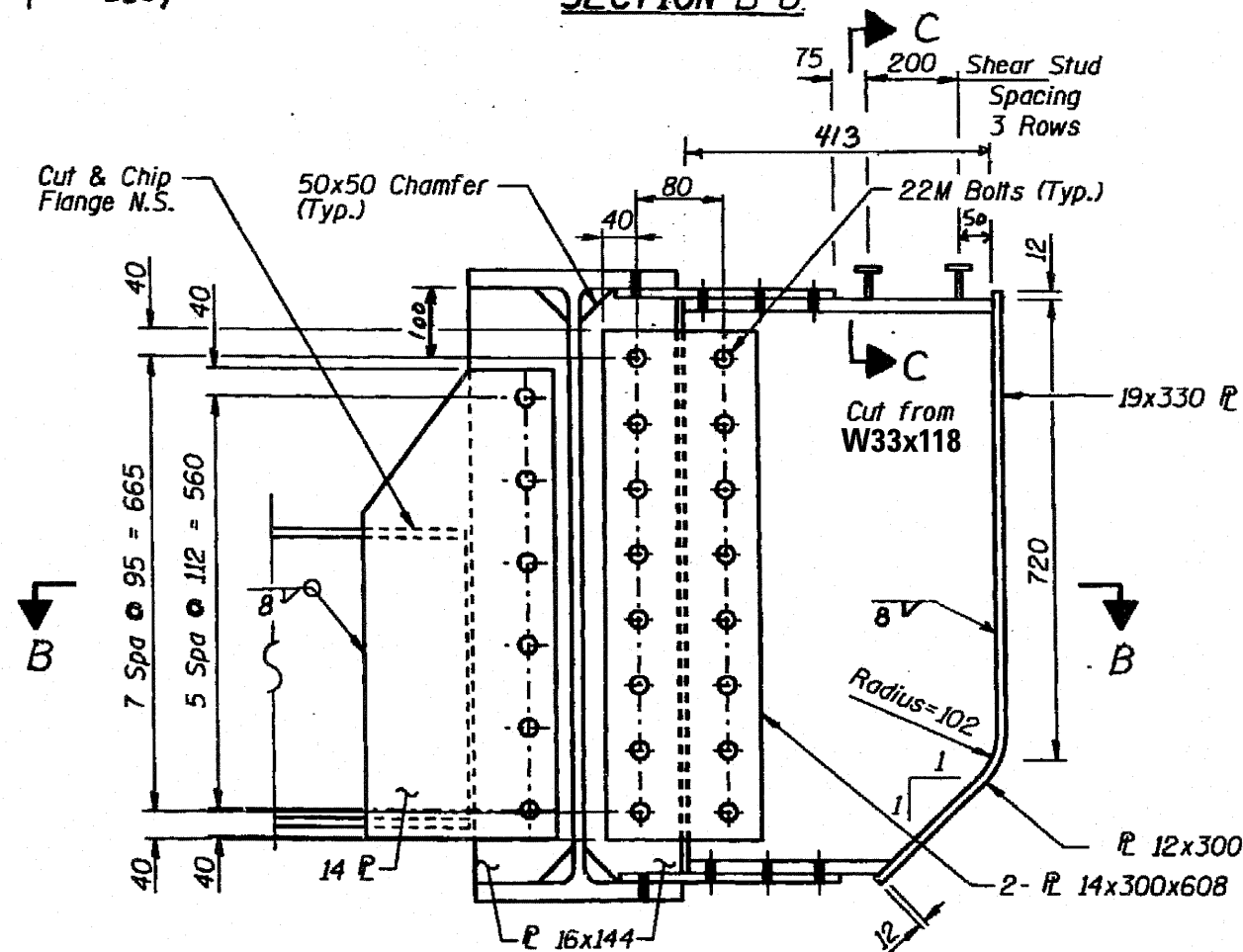


SECTION C-C

NOTE: NTR denotes Notch Toughness Requirements
All dimensions are in millimeters (mm) except as noted.



SECTION B-B



DIAPHRAGM D₁ & BRACKET B₁

FILE NAME	USER NAME = rgo11	DESIGNED - AMR	REVISED -	STATE OF ILLINOIS DEPARTMENT OF TRANSPORTATION	DIAPHRAGM DETAILS - LOCATION 7 STRUCTURE NO. 016-1046			F.A.I. RTE. 94	SECTION 2010-127-BP	COUNTY COOK	TOTAL SHEETS 160	SHEET NO. 116
PLOT SCALE = 1:2000 1/2 IN.	CHECKED - JMH	DATE - MARCH, 2011	REVISED -		SCALE: NTS	SHEET NO. 6 OF 7 SHEETS	STA. TO STA.	CONTRACT NO. 60N01				
PLOT DATE = 3/28/2011	DATE - MARCH, 2011	REVISED -	REVISED -		ILLINOIS FED. AID PROJECT							