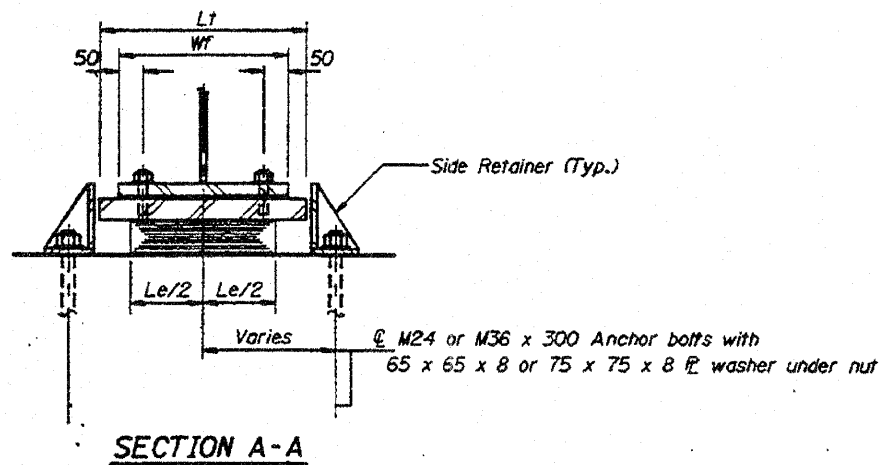


ELEVATION AT PIER



SECTION A-A

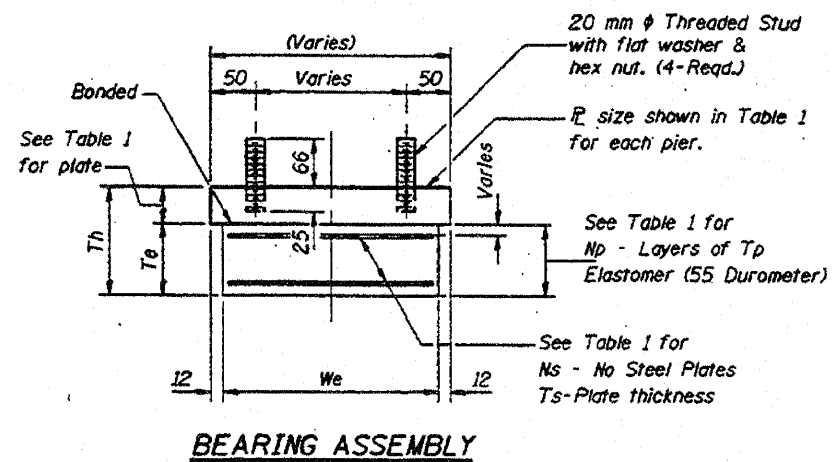
LEGEND

- WF = Wide flange
- We = Width of Elastomer Pad
- Le = Length of Elastomer Pad
- Tp = Thickness of Elastomer Layers
- Np = Number of Elastomer Layers
- Ts = Thickness of Steel Plate
- Ns = Number of Steel Plate
- ERT = Effective Rubber Thickness
- Te = Thickness of Bearing Pad

NOTES:

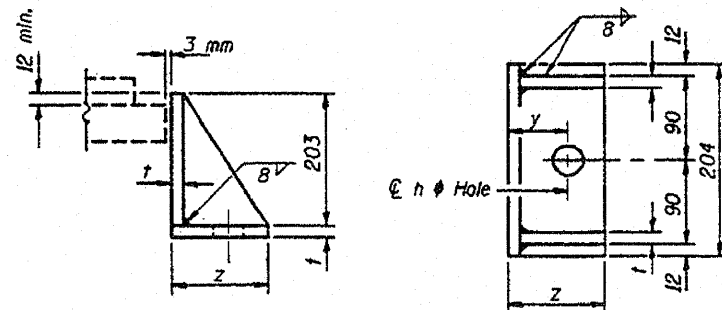
1. All structural steel in bearing assemblies shall be AASHTO M270 grade 345 steel.
2. All dimensions are in millimeters (mm) except as noted.

TYPE I ELASTOMERIC EXP. BRG.



BEARING ASSEMBLY

Note: Shim plates shall not be placed under Bearing Assembly.



SIDE RETAINER

Equivalent rolled angle with stiffeners will be allowed in lieu of welded plates. Weight included with Structural Steel.

Bofts φ (mm)	Y	Z	t	h
24	54	100	14	30
36	70	140	16	44

TABLE 1-TYPE I ELASTIC EXPANSION BEARING

Location	Bearing Type	BEARING PAD DIMENSIONS										Slope Max. %	Top Steel Plate Size	Anchor Bolt Type A307	Anchor Bolts Required
		We	WF	Le	Tp	Np	Ts	Ns	ERT	Te	Th				
Pier 45	306 b	306	305	458	14	4	5	3	56	71	121	2.20	50x330x508	M36	2
Pier 43-South	178 c	178	305	306	10	5	2.5	4	50	60	100	3.37	40x202x356	M24	2
Pier 43-North	152 b	152	304	254	8	5	2	4	40	48	88	3.16	40x176x354	M24	2
Pier 41-South	152 b	178	304	306	8	5	2	4	40	48	88	3.16	40x202x356	M24	2
Pier 41-North	178 b	178	304	306	10	4	2.5	3	40	48	88	2.7	40x202x356	M24	2
Pier 39-South	178 a	178	304	306	10	3	2.5	2	30	35	75	2.02	40x202x356	M24	2
Pier 39-North	178 b	178	304	306	10	4	2.5	3	40	48	88	2.7	40x202x356	M24	2
Pier 37-South	152 b	152	304	254	8	5	2	4	40	48	88	3.16	40x176x354	M24	2
Pier 37-North	178 b	178	304	306	10	4	2.5	3	40	48	88	2.7	40x202x356	M24	2

TABLE 2 - SHIM PLATES

Location	Beam Designation	Shim Plate Size	Location	Beam Designation	Shim Plate Size
Pier 43-North	4B1	61x176x354	Pier 39-South	7B1	20x202x356
	4B2	35x176x354		Pier 39-North	7B2
	G145	68x176x354			
	G144	70x176x354			
	G143	73x176x354	Pier 37-South	9B1	21x176x354
G142	68x176x354	G121		126x176x354	
			Pier 37-North	G116	114x202x356
Pier 41-South	5B1	47x202x356			
	6D2	60x202x356			