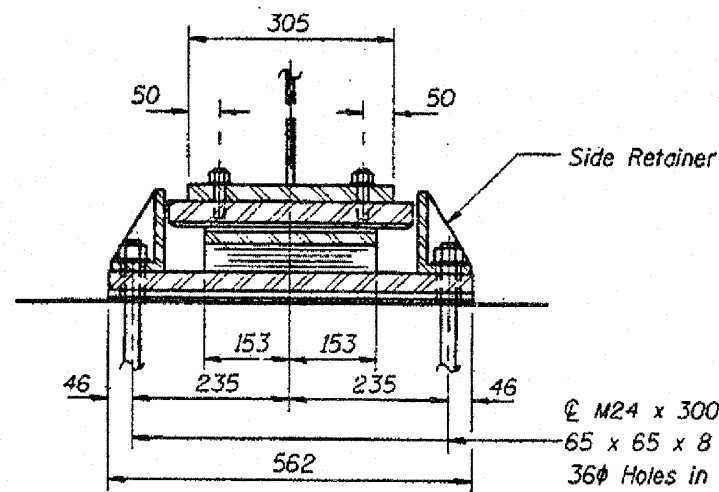
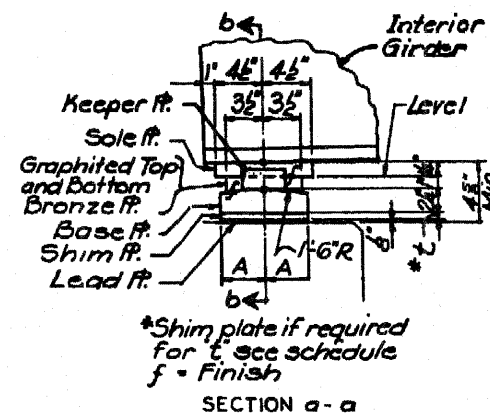


ELEVATION AT ABUT.

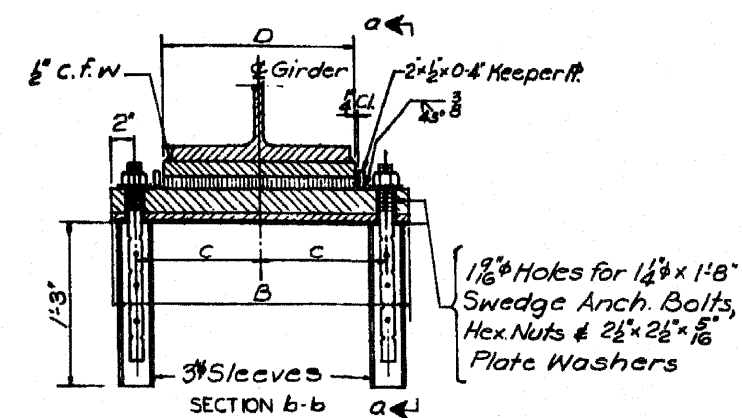


SECTION A-A

M24 x 300 Anchor bolts with 65 x 65 x 8 washer under nut. 36 holes in bottom.



SECTION a-a

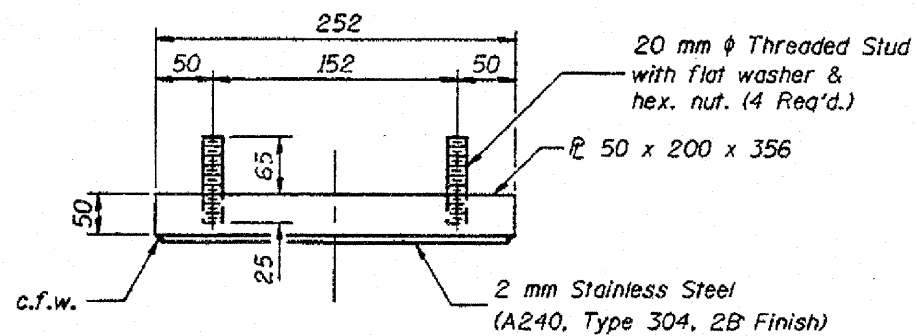


EXPANSION BEARING DETAILS Scale 1/2"=1'-0"

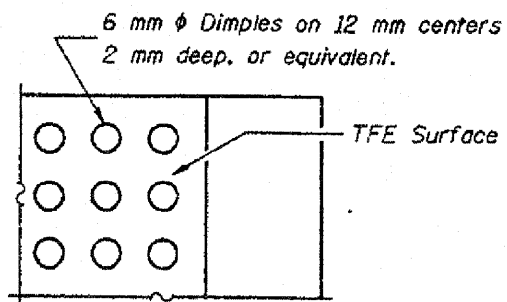
EXPANSION BEARING SCHEDULE						
MARK	DIMENSIONS				REMARKS	
	A	B	C	D		
E1	4"	2'3"	11 1/2"	1'5 1/2"	Typical for 16" Flange	
E2	4"	1'10 1/8"	9 1/2"	1'1"	Typical for 12" Flange	

Note: Use typical bearings mark E1 and E2 unless otherwise noted.

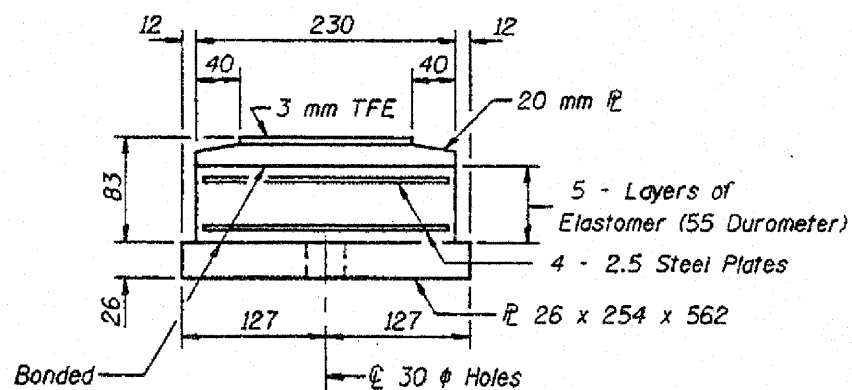
TYPE II TFE ELASTOMERIC EXP. BRG.



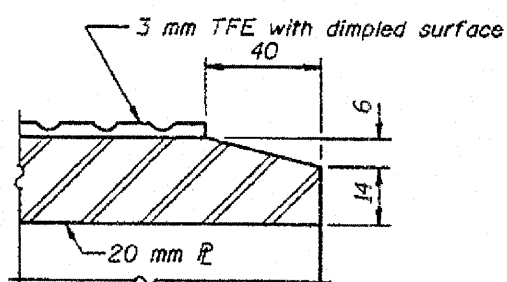
TOP BEARING ASSEMBLY



PLAN-TFE SURFACE



BOTTOM BEARING ASSEMBLY



SECTION THRU TFE

LEGEND

- Wf = Wide flange
- We = Width of Elastomer Pad
- Le = Length of Elastomer Pad
- Tp = Thickness of Elastomer Layers
- Np = Number of Elastomer Layers
- Ts = Thickness of Steel Plate
- Ns = Number of Steel Plate
- ERT = Effective Rubber Thickness
- Te = Thickness of Bearing Pad

NOTES:

1. All structural steel in bearing assemblies shall be AASHTO M270 grade 345 steel.
2. All dimensions are in millimeters (mm) except as noted.

TYPE II ELASTIC EXPANSION BEARING TABLE 2

Location	Bearing Type	BEARING PAD DIMENSIONS										Steel Plate Size		Anchor Bolt Type	Anchor Bolts Required
		Wf	We	Le	Tp	Np	Ts	Ns	ERT	Te	Th	top	bottom		
		West abutment	230 a	305	230	306	10	5	2.5	4	50	83	161		