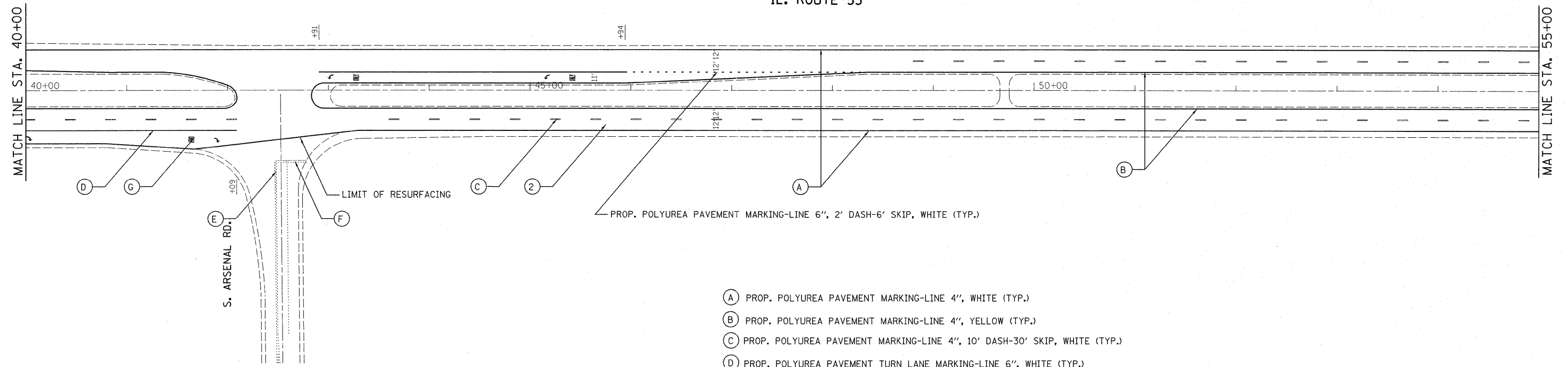


IL. ROUTE 53

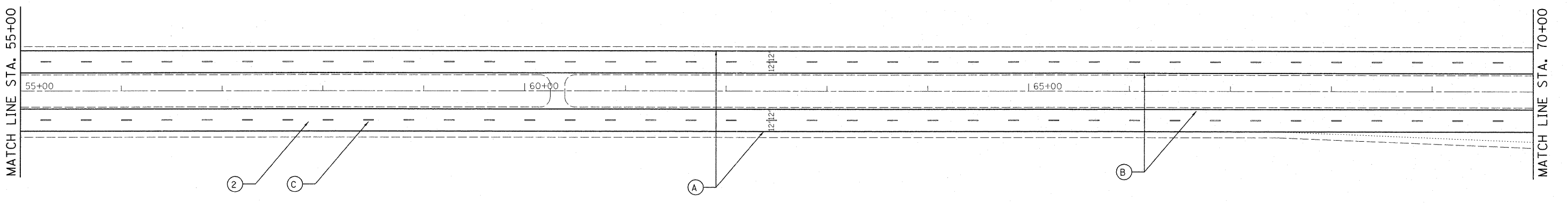


- ① CROSSOVERS  
 PROP. HOT-MIX ASPHALT SURFACE REMOVAL, 2 1/2"  
 PROP. HMA SURFACE COURSE, MIX "D", N70, 1 1/2"  
 PROP. POLYMERIZED LEVELING BINDER COURSE (MACHINE METHOD), IL-4.75, N50, 1"
- ② PROP. HOT-MIX ASPHALT SURFACE REMOVAL, 4"  
 PROP. P.C. CONCRETE OVERLAY, 4"

- Ⓐ PROP. POLYUREA PAVEMENT MARKING-LINE 4", WHITE (TYP.)
- Ⓑ PROP. POLYUREA PAVEMENT MARKING-LINE 4", YELLOW (TYP.)
- Ⓒ PROP. POLYUREA PAVEMENT MARKING-LINE 4", 10' DASH-30' SKIP, WHITE (TYP.)
- Ⓓ PROP. POLYUREA PAVEMENT TURN LANE MARKING-LINE 6", WHITE (TYP.)
- Ⓔ PROP. POLYUREA PAVEMENT MARKING DOUBLE LINES 4" @ C-C, YELLOW (TYP.)
- Ⓕ PROP. POLYUREA PAVEMENT STOP MARKING-LINE 24", WHITE (TYP.)
- Ⓖ PROP. POLYUREA PAVEMENT MARKING LETTERS AND SYMBOLS, WHITE (TYP.)

PROP. POLYUREA PAVEMENT MARKING-LINE 6", 2' DASH-6' SKIP, WHITE (TYP.)

IL. ROUTE 53



FILE NAME =	USER NAME = qureshiya	DESIGNED -	REVISED -	<b>STATE OF ILLINOIS DEPARTMENT OF TRANSPORTATION</b>	<b>ROADWAY AND PAVEMENT MARKING PLANS</b>			F.A.P. RTE. 846	SECTION 4-RS-4	COUNTY WILL	TOTAL SHEETS 25	SHEET NO. 6
c:\pwork\pwork\qureshiya\d8255746\012211-sht-plan.dgn	PLOT SCALE = 50.0000' / IN.	DRAWN -	REVISED -		SCALE:	SHEET NO. 2 OF 9 SHEETS	STA.	TO STA.	CONTRACT NO. 60N05			
	PLOT DATE = 5/26/2011	CHECKED -	REVISED -		ILLINOIS FED. AID PROJECT							
		DATE -	REVISED -									