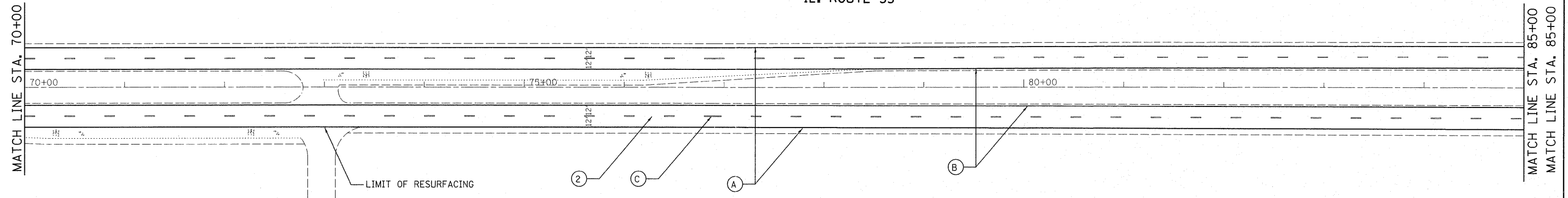


IL. ROUTE 53

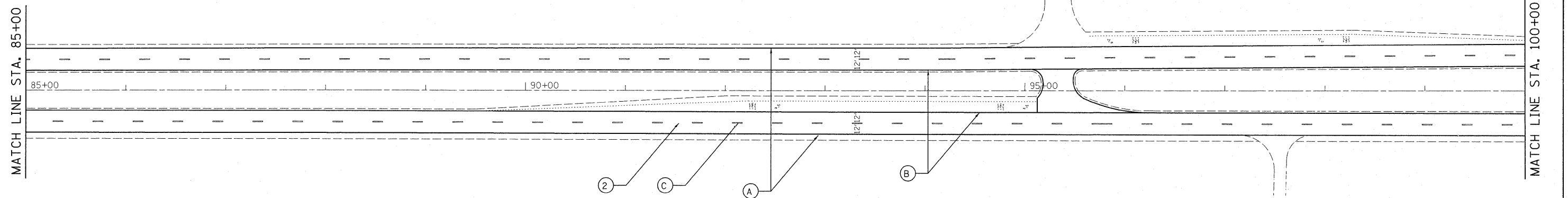


- ① CROSSOVERS  
 PROP. HOT-MIX ASPHALT SURFACE REMOVAL, 2 1/2"  
 PROP. HMA SURFACE COURSE, MIX "D", N70, 1 1/2"  
 PROP. POLYMERIZED LEVELING BINDER COURSE (MACHINE METHOD), IL-4.75, N50, 1"
- ② PROP. HOT-MIX ASPHALT SURFACE REMOVAL, 4"  
 PROP. P.C. CONCRETE OVERLAY, 4"

- Ⓐ PROP. POLYUREA PAVEMENT MARKING-LINE 4", WHITE (TYP.)
- Ⓑ PROP. POLYUREA PAVEMENT MARKING-LINE 4", YELLOW (TYP.)
- Ⓒ PROP. POLYUREA PAVEMENT MARKING-LINE 4", 10' DASH-30' SKIP, WHITE (TYP.)
- Ⓓ PROP. POLYUREA PAVEMENT TURN LANE MARKING-LINE 6", WHITE (TYP.)
- Ⓔ PROP. POLYUREA PAVEMENT MARKING DOUBLE LINES 4" @ C-C, YELLOW (TYP.)
- Ⓕ PROP. POLYUREA PAVEMENT STOP MARKING-LINE 24", WHITE (TYP.)
- Ⓖ PROP. POLYUREA PAVEMENT MARKING LETTERS AND SYMBOLS, WHITE (TYP.)

JOLIET ARSENAL

IL. ROUTE 53



FILE NAME =	USER NAME = qureshiga	DESIGNED -	REVISED -
c:\pwork\pwork\qureshiga\d0255746\012211-shr-plan.dgn		DRAWN -	REVISED -
		CHECKED -	REVISED -
		DATE -	REVISED -

STATE OF ILLINOIS  
 DEPARTMENT OF TRANSPORTATION

ROADWAY AND PAVEMENT MARKING  
 PLANS

SCALE: SHEET NO. 3 OF 9 SHEETS STA. TO STA.

F.A.P. RTE.	SECTION	COUNTY	TOTAL SHEETS	SHEET NO.
846	4-RS-4	WILL	25	7
CONTRACT NO. 60N05				
ILLINOIS FED. AID PROJECT				