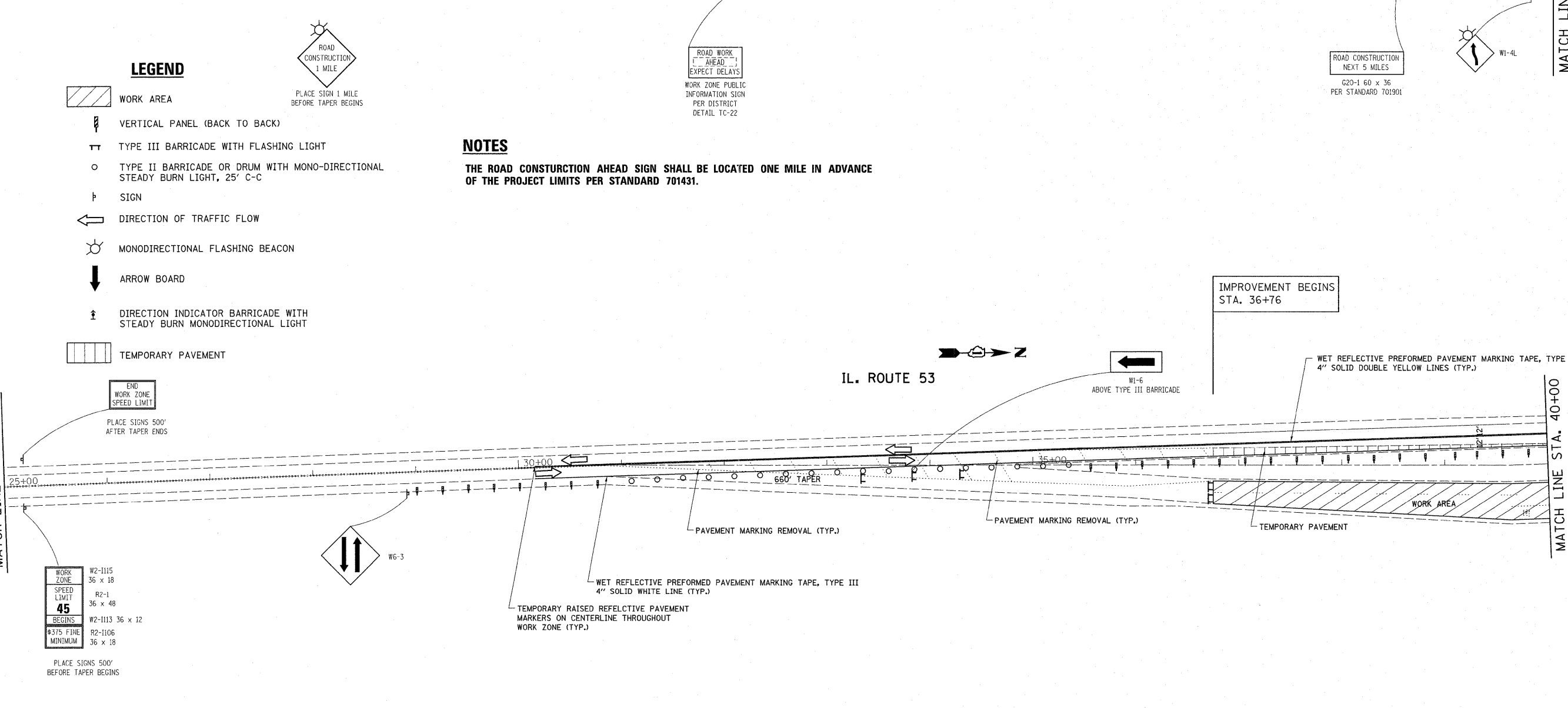


- LEGEND**
- WORK AREA
 - VERTICAL PANEL (BACK TO BACK)
 - TYPE III BARRICADE WITH FLASHING LIGHT
 - TYPE II BARRICADE OR DRUM WITH MONO-DIRECTIONAL STEADY BURN LIGHT, 25' C-C
 - SIGN
 - DIRECTION OF TRAFFIC FLOW
 - MONODIRECTIONAL FLASHING BEACON
 - ARROW BOARD
 - DIRECTION INDICATOR BARRICADE WITH STEADY BURN MONODIRECTIONAL LIGHT
 - TEMPORARY PAVEMENT

NOTES
 THE ROAD CONSTRUCTION AHEAD SIGN SHALL BE LOCATED ONE MILE IN ADVANCE OF THE PROJECT LIMITS PER STANDARD 701431.



FILE NAME =	USER NAME = qureshiya	DESIGNED -	REVISED -	STATE OF ILLINOIS DEPARTMENT OF TRANSPORTATION	SUGGESTED TRAFFIC CONTROL STAGE ONE			F.A.P. RTE.	SECTION	COUNTY	TOTAL SHEETS	SHEET NO.	
cr:\pwork\pwork\qureshiya\d0255746\012211-sh1-plan.dgn	PLOT SCALE = 53.9365' / IN.	DRAWN -	REVISED -		SCALE:	SHEET NO. 1 OF 20 SHEETS	STA.	TO STA.	846	4-RS-4	WILL	25	14A
PLOT DATE = 5/25/2011	DATE -	CHECKED -	REVISED -					CONTRACT NO. 60N05		ILLINOIS FED. AID PROJECT			
		DATE -	REVISED -										