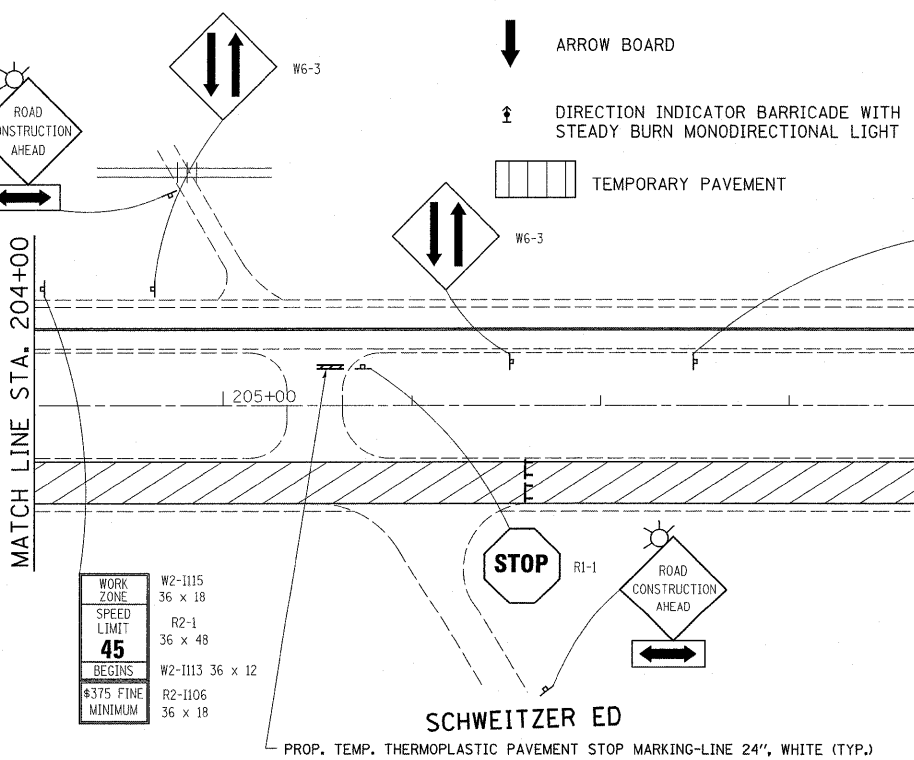


LEGEND

- WORK AREA
- VERTICAL PANEL (BACK TO BACK)
- TYPE III BARRICADE WITH FLASHING LIGHT
- TYPE II BARRICADE OR DRUM WITH MONO-DIRECTIONAL STEADY BURN LIGHT, 25' C-C
- SIGN
- DIRECTION OF TRAFFIC FLOW
- MONODIRECTIONAL FLASHING BEACON
- ARROW BOARD
- DIRECTION INDICATOR BARRICADE WITH STEADY BURN MONODIRECTIONAL LIGHT
- TEMPORARY PAVEMENT

NOTES

THE ROAD CONSTRUCTION AHEAD SIGN SHALL BE LOCATED ONE MILE IN ADVANCE OF THE PROJECT LIMITS PER STANDARD 701431.



WORK ZONE	W2-1115	36 x 18
SPEED LIMIT	R2-1	36 x 48
BEGINS	W2-1113	36 x 12
\$375 FINE MINIMUM	R2-1106	36 x 18

WORK ZONE	W2-1115	36 x 18
SPEED LIMIT	R2-1	36 x 48
BEGINS	W2-1113	36 x 12
\$375 FINE MINIMUM	R2-1106	36 x 18

FILE NAME =	USER NAME = qureshiga	DESIGNED -	REVISED -	STATE OF ILLINOIS DEPARTMENT OF TRANSPORTATION	SUGGESTED TRAFFIC CONTROL STAGE ONE			F.A.P. RTE.	SECTION	COUNTY	TOTAL SHEETS	SHEET NO.
cr:\p\work\p\wido\qureshiga\d0255746\012211-sh-t-plan.dgn	PLOT SCALE = 50.0000' / IN.	DRAWN -	REVISED -					846	4-RS-4	WILL	25	14G
PLOT DATE = 5/25/2011	DATE -	CHECKED -	REVISED -		CONTRACT NO. 60N05			ILLINOIS FED. AID PROJECT				
		DATE -	REVISED -		SCALE:	SHEET NO. 7 OF 20 SHEETS	STA.	TO STA.				