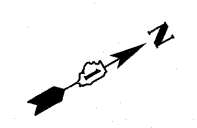
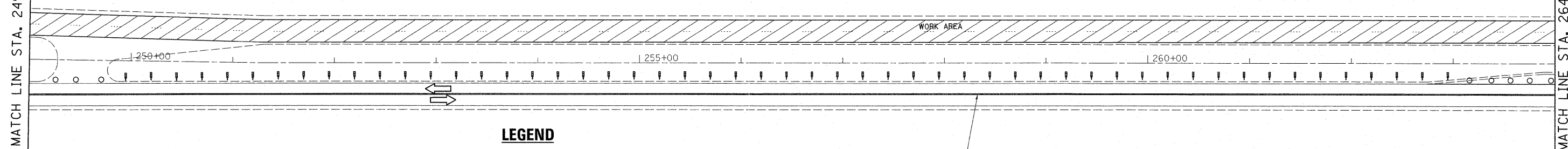


IL. ROUTE 53



MATCH LINE STA. 249+00

MATCH LINE STA. 264+00



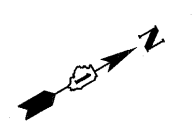
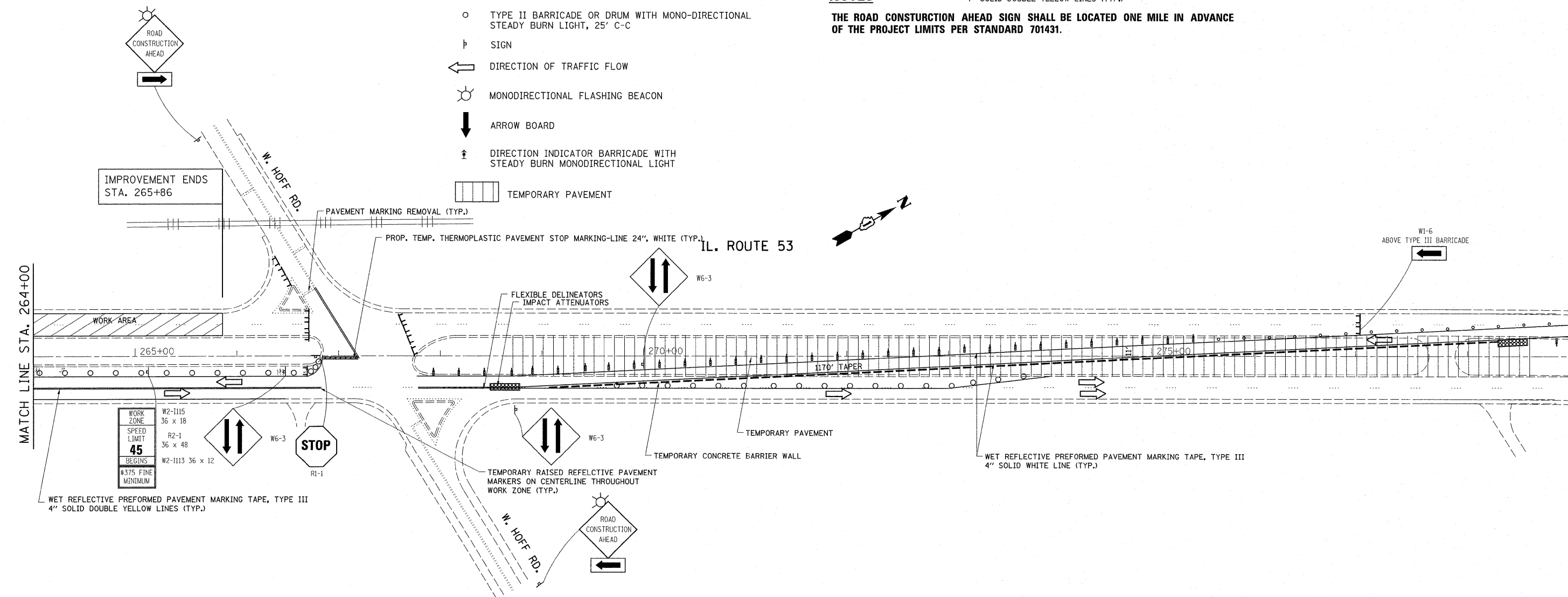
LEGEND

- WORK AREA
- VERTICAL PANEL (BACK TO BACK)
- TYPE III BARRICADE WITH FLASHING LIGHT
- TYPE II BARRICADE OR DRUM WITH MONO-DIRECTIONAL STEADY BURN LIGHT, 25' C-C
- SIGN
- DIRECTION OF TRAFFIC FLOW
- MONODIRECTIONAL FLASHING BEACON
- ARROW BOARD
- DIRECTION INDICATOR BARRICADE WITH STEADY BURN MONODIRECTIONAL LIGHT
- TEMPORARY PAVEMENT

NOTES

WET REFLECTIVE PREFORMED PAVEMENT MARKING TAPE, TYPE III
4" SOLID DOUBLE YELLOW LINES (TYP.)

THE ROAD CONSTRUCTION AHEAD SIGN SHALL BE LOCATED ONE MILE IN ADVANCE OF THE PROJECT LIMITS PER STANDARD 701431.



MATCH LINE STA. 264+00

MATCH LINE STA. 279+00

FILE NAME =	USER NAME = qureshiya	DESIGNED -	REVISED -	STATE OF ILLINOIS DEPARTMENT OF TRANSPORTATION	SUGGESTED TRAFFIC CONTROL STAGE TWO			F.A.P. RTE.	SECTION	COUNTY	TOTAL SHEETS	SHEET NO.
c:\pwork\pwork\qureshiya\d0255746\012211-sht-plan.dgn	2211-sht-plan.dgn	DRAWN -	REVISED -		846	4-RS-4	WILL	25	16H	CONTRACT NO. 60N05		
PLOT SCALE = 50.0000' / IN.		CHECKED -	REVISED -					ILLINOIS FED. AID PROJECT				
PLOT DATE = 5/25/2011		DATE -	REVISED -		SCALE:	SHEET NO. 19 OF 20 SHEETS	STA.	TO STA.				