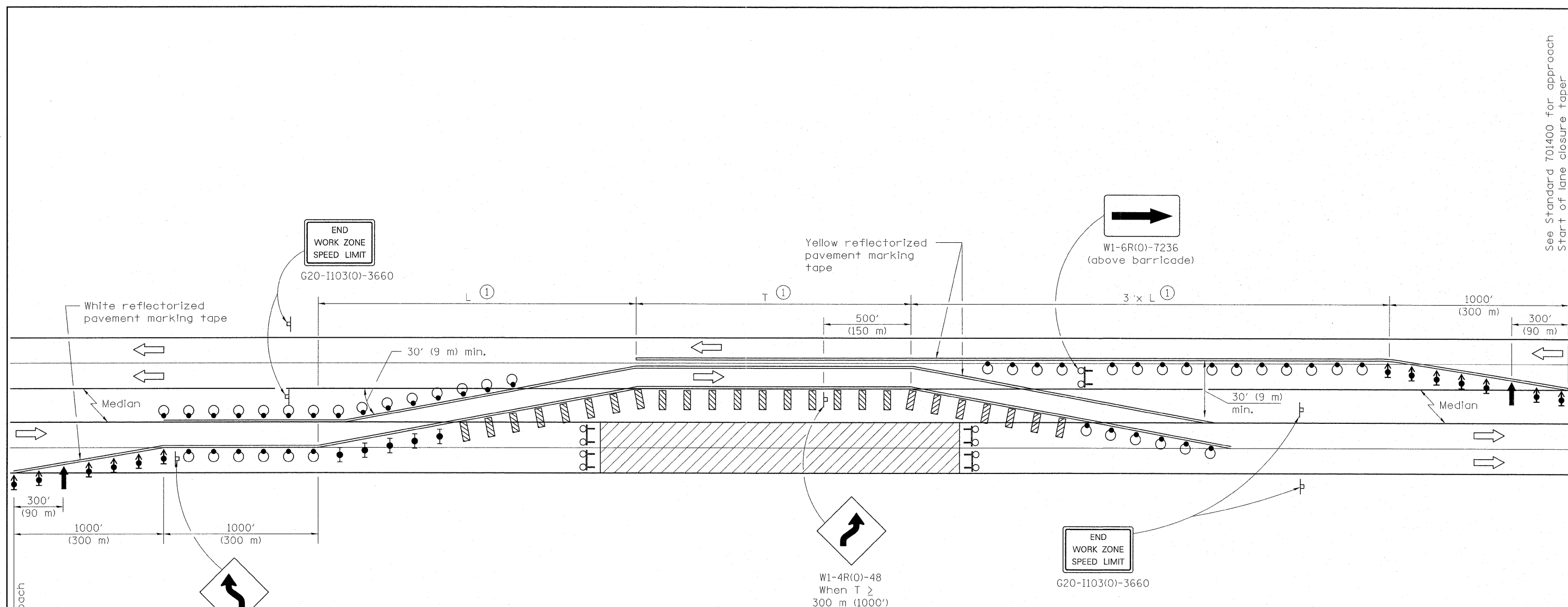
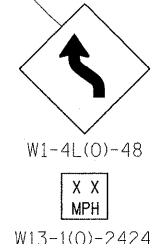


See Standard 701400 for approach  
Start of lane closure taper



See Standard 701400 for approach  
Start of lane closure taper



**SYMBOLS**

- Arrow board
- Work area
- Sign
- Direction Indicator barricade with steady burn monodirectional light
- Type II barricade with steady burn monodirectional light
- Drum with steady burn monodirectional light
- Vertical Panel (back to back)
- Type III barricade with flashing lights

① "L" and "T" shall be as shown on the plan details.

**GENERAL NOTES**

This Detail is used where at any time, any vehicle, equipment, workers or their activities require the closure of two adjacent lanes and a temporary crossover is provided by making use of one lane of pavement normally used by opposing flow of traffic and concrete barrier is used to separate the opposing traffic.

This Standard must always be used in combination with Standard 701400.

All barricades, drums, and vertical panels shall be at 50 ft. (15 m) centers.

All dimensions are in inches (millimeters) unless otherwise shown.

**LANE CLOSURE, MULTILANE DIVIDED, WITH CROSSOVER**

FILE NAME =	USER NAME = qureshiya	DESIGNED -	REVISED -	<b>STATE OF ILLINOIS DEPARTMENT OF TRANSPORTATION</b>	<b>SUGGESTED TRAFFIC CONTROL</b>			F.A.P. RTE.	SECTION	COUNTY	TOTAL SHEETS	SHEET NO.
ci:\pw_work\p\dot\qureshiya\d0255746\012211-ah-1-plan.dgn	PLOT SCALE = 50.0000' / IN.	DRAWN -	REVISED -		SCALE:	SHEET NO. 18 OF 18 SHEETS	STA.	846	4-RS-4	WILL	25	17
PLOT DATE = 5/4/2011	DATE -	CHECKED -	REVISED -		TO STA.	ILLINOIS FED. AID PROJECT			CONTRACT NO. 60N05			